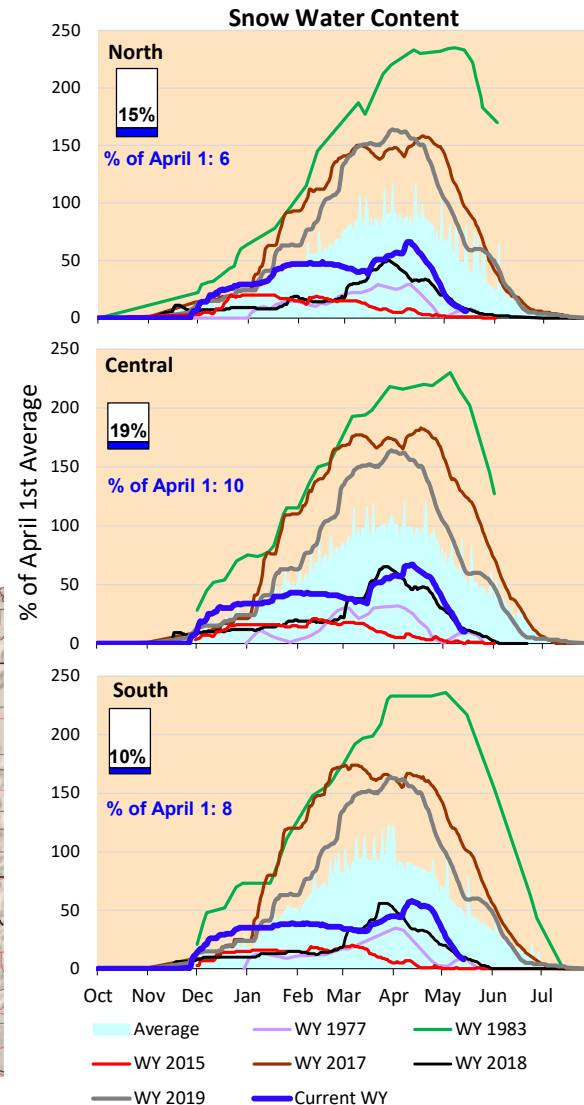
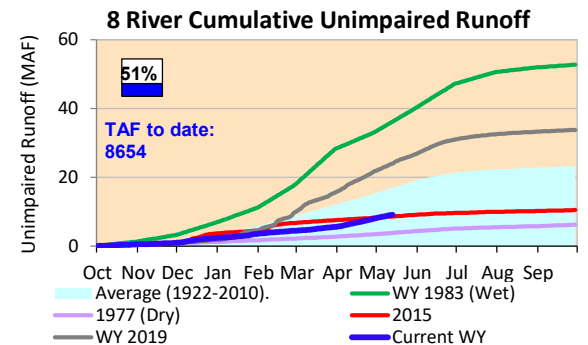
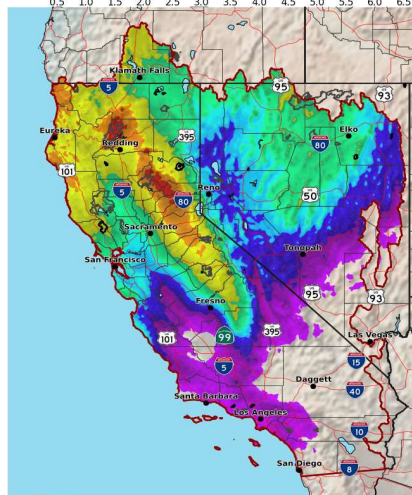
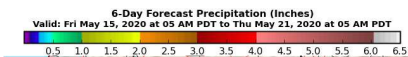


Some late season storm activity predicted for this week, with a few inches of additional precipitation over the next week. We're at the end of the precipitation season and likely won't be seeing significant additional precipitation in the next few months. Snowpacks showing big decreases, so pretty far along with melt and can expect unimpaired streamflow to drop off.

Note: Percentages in each plot refers to percent of average for this date. The percent of historic average for each SWC location differs slightly from CDEC's report due to small discrepancies in historical data.

6-Day Forecast Precipitation (inches)

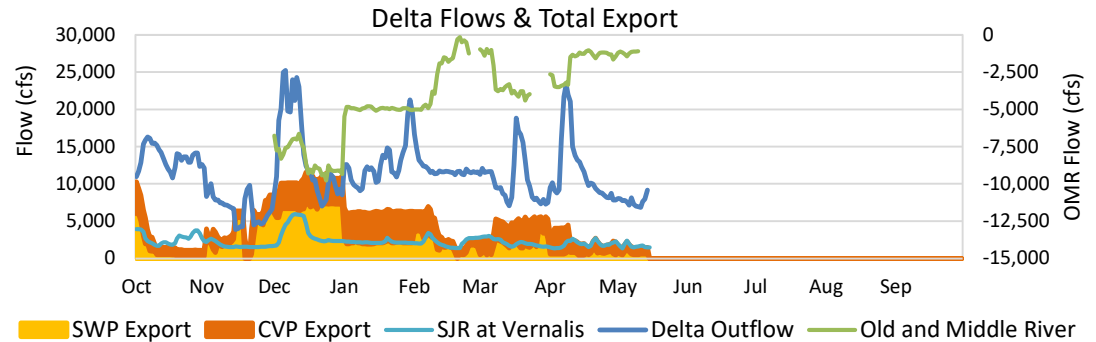




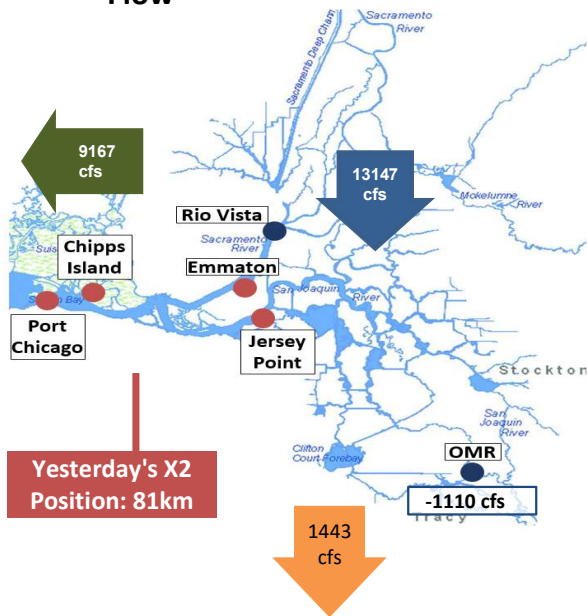
Project Operations

5/15/2020

Delta outflow conditions are balanced, with X2 and salinity management controlling operations. Exports are low with export limitations and SJR conditions controlling. Oroville and Shasta have probably hit their high points for the year and are starting to decline. San Luis Reservoir (both SWP and CVP shares) past its peak and starting to decline while demands pick up and exports are low.



Daily Average Flow



Reservoir Storage

