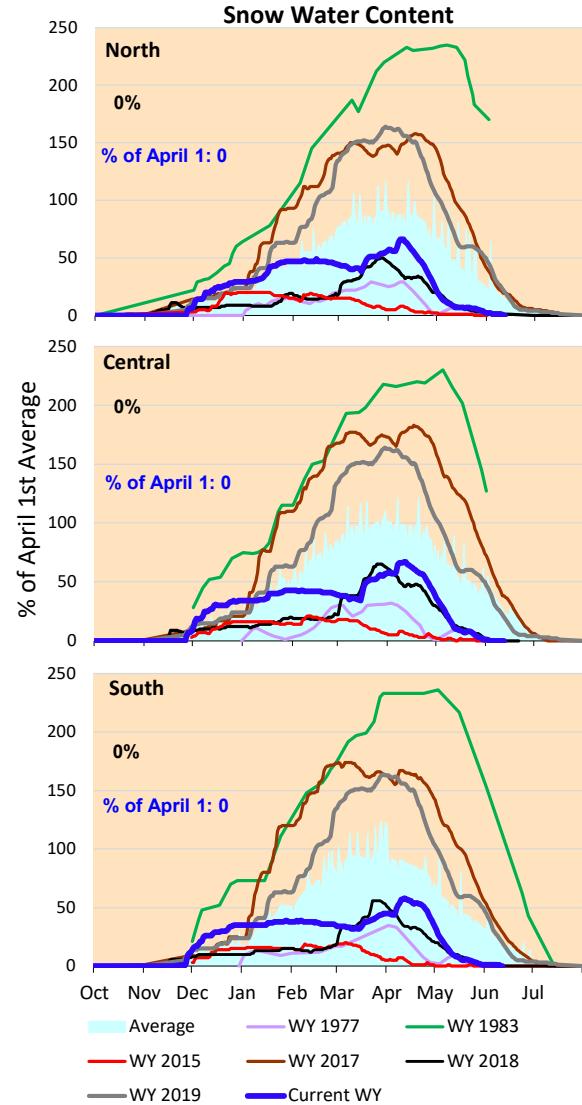
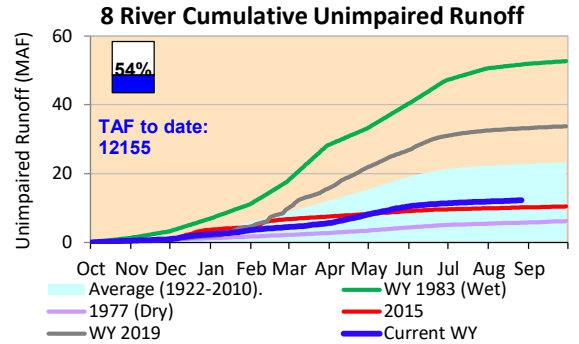
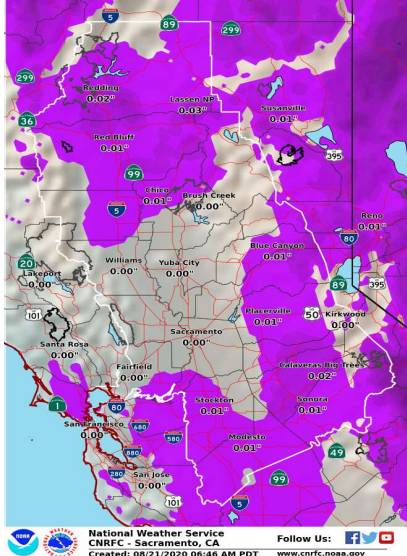
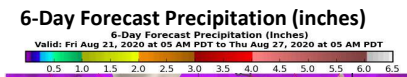


Projected precipitation continues to be insignificant. Snowmelt has essentially completed, with remaining snowpack at zero percent in the Sierras.

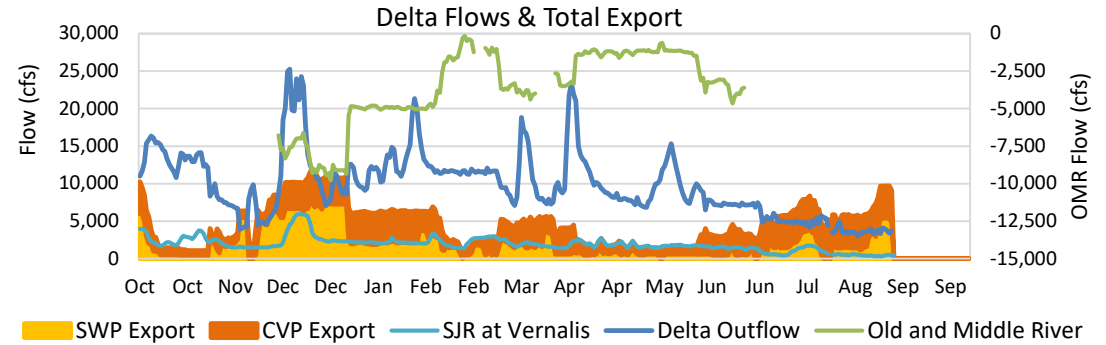




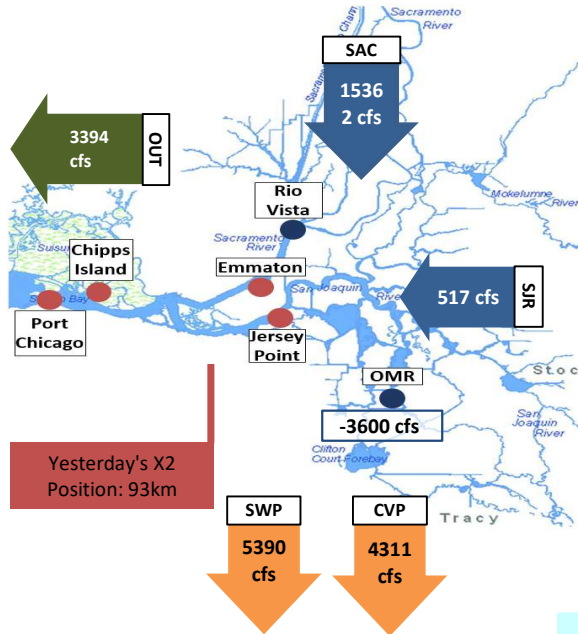
Project Operations

8/28/2020

Oroville storage running below average for this time of year, Due to dry winter. Delta exports increased starting July 1, with X2 and OMR standards dropping off. Exports for the remainder of the summer controlled by upstream reservoir supply availability, with outflow as required to meet salinity standards. SWP exports have been low due to limited Oroville storage availability. Only limited use of Joint Point by CVP for Cross Valley Canal water over the last week.



Daily Average Flow



Reservoir Storage

