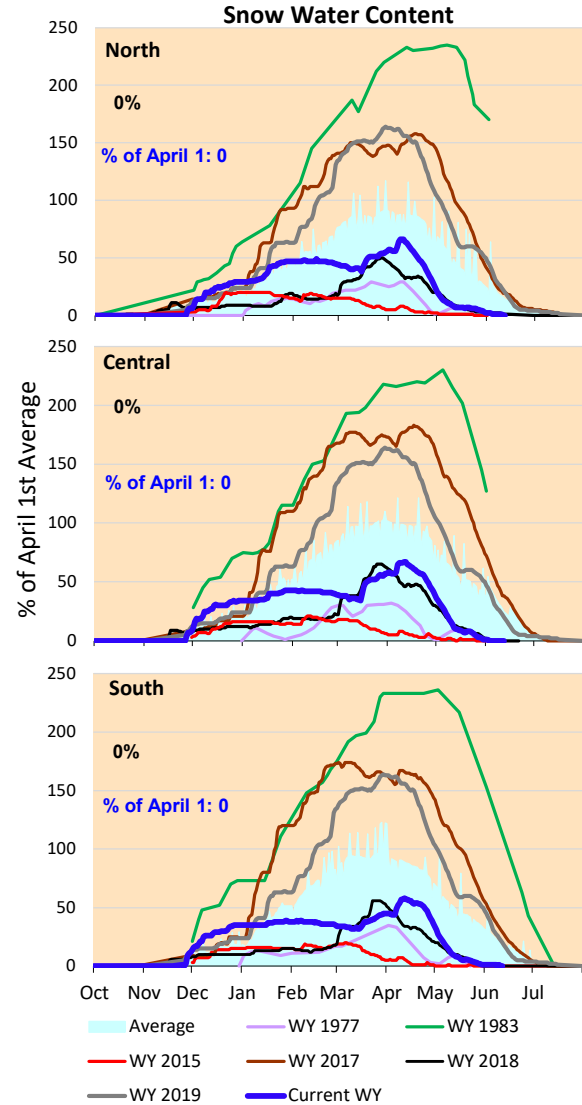
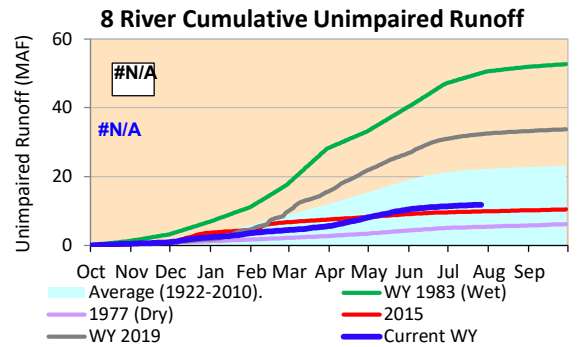
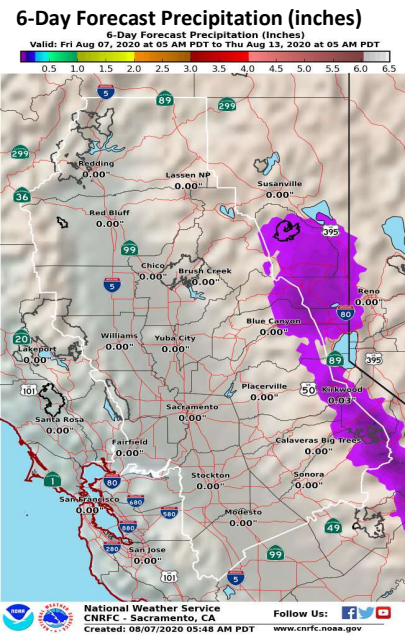


Projected precipitation continues to be insignificant -- its summer in California, what do you expect? Snowmelt has essentially completed, with remaining snowpack at zero percent in the Sierras.

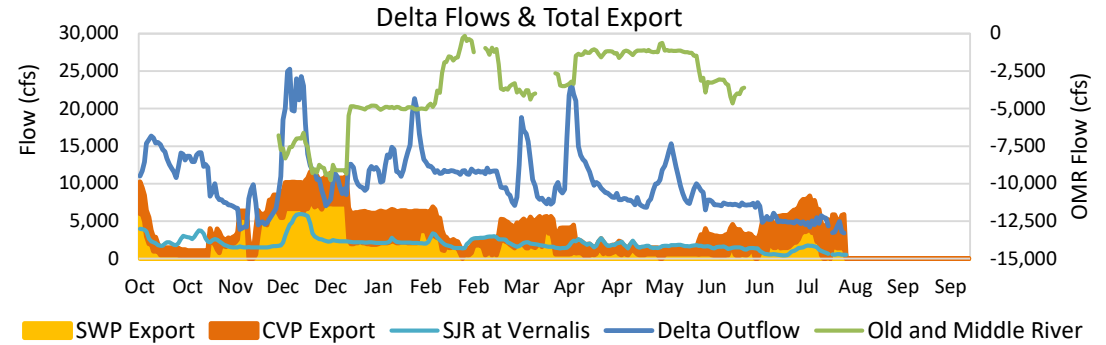




Project Operations

8/7/2020

Oroville storage running below average for this time of year, reflecting fairly dry winter. Delta exports increased starting July 1, with X2 and OMR standards dropping off. Exports for the remainder of the summer controlled by upstream reservoir supply availability, with outflow as required to meet West Delta Agricultural standards. SWP exports have been low due to limited Oroville storage availability. CVP has been using Joint Point pumping at Banks Pumping Plant.



Daily Average Flow

