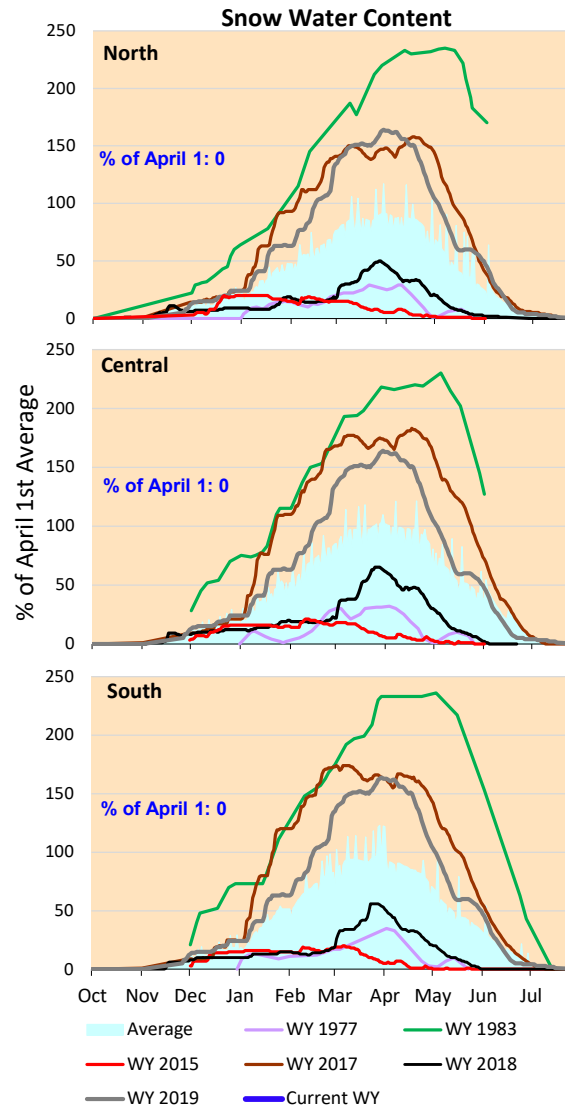
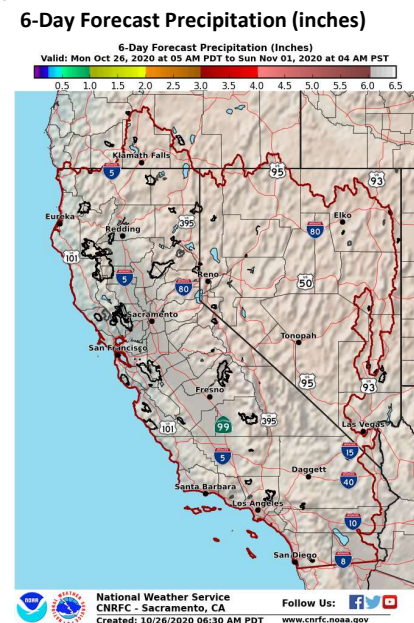
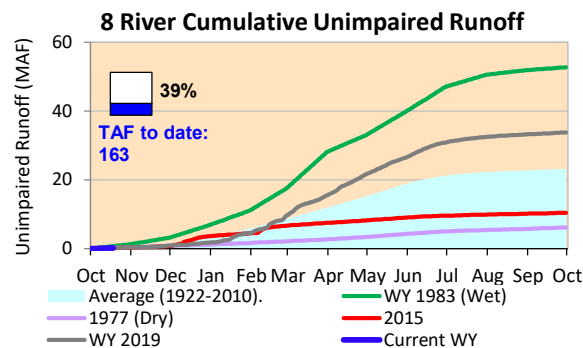


Still waiting for the first significant precipitation event of the 2021 Water Year. De-minimus precipitation predicted for the next week.

*Note: Percentages in each plot refers to percent of average for this date. When historic data is unavailable, Snow Water Content Bar plot is not shown. The percent of historic average for each SWC location differs slightly from CDEC's report due to small discrepancies in historical data.





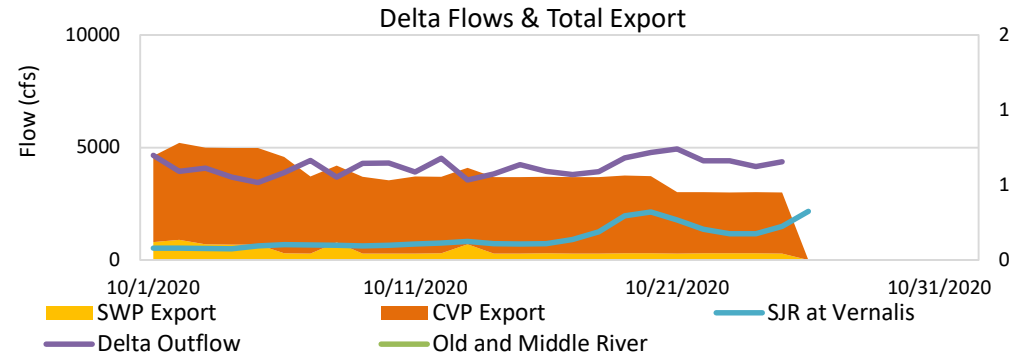
Project Operations



10/26/2020

Oroville storage running below average for this time of year, Due to dry winter. Delta exports remaining low, with Oroville releases at typical low fall levels to preserve storage for 2021. CVP Joint Point use of Banks Pumping Plant stopped at end of September.

X2 location missing below; should be approximately 96 as of October 25.



Daily Average Flow

