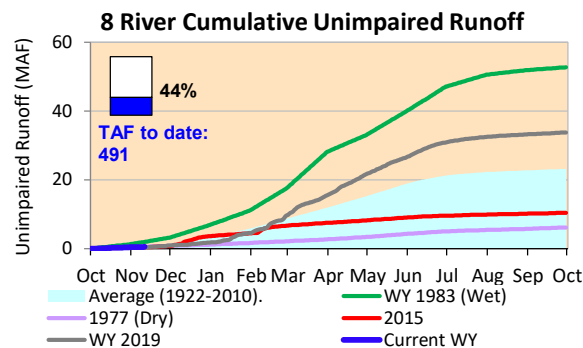
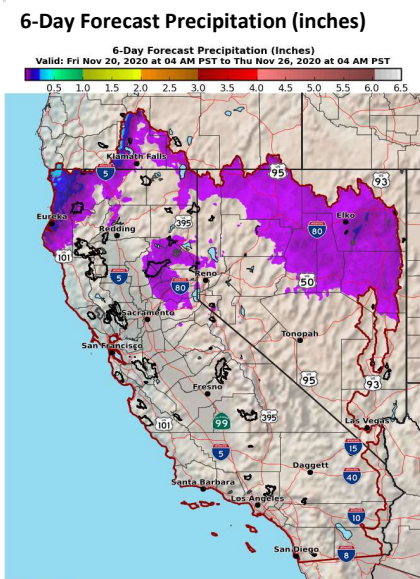
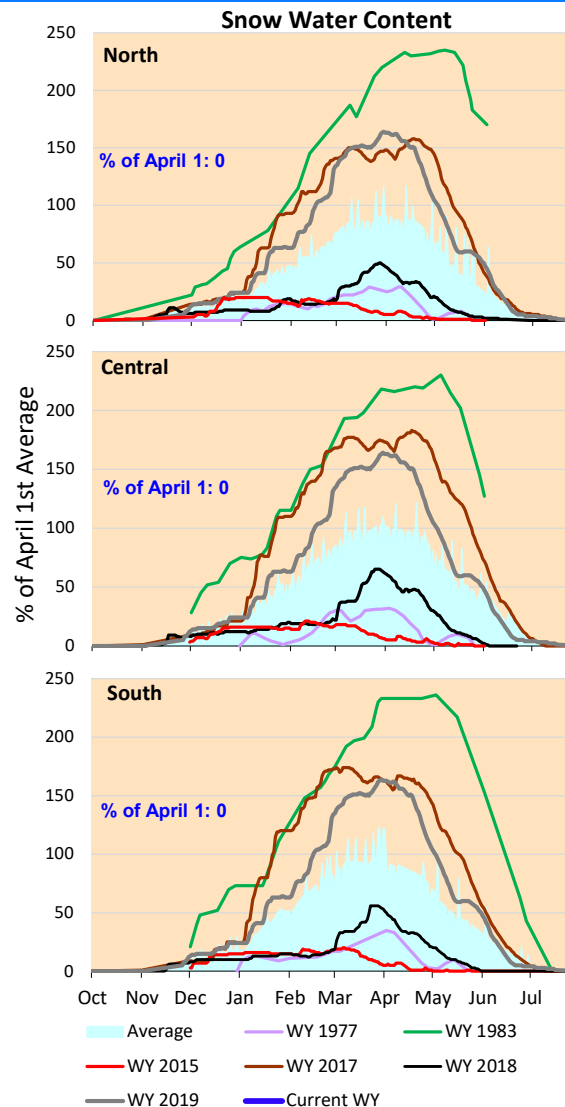


A small storm earlier this week, but no significant runoff yet. Next week looking pretty dry.

*Note: Percentages in each plot refers to percent of average for this date. When historic data is unavailable, Snow Water Content Bar plot is not shown. The percent of historic average for each SWC location differs slightly from CDEC's report due to small discrepancies in historical data.



National Weather Service
 CNRFC - Sacramento, CA
 Created: 11/20/2020 06:30 AM PST
 Follow Us: [f](#) [t](#) [c](#)
www.cnrfc.noaa.gov





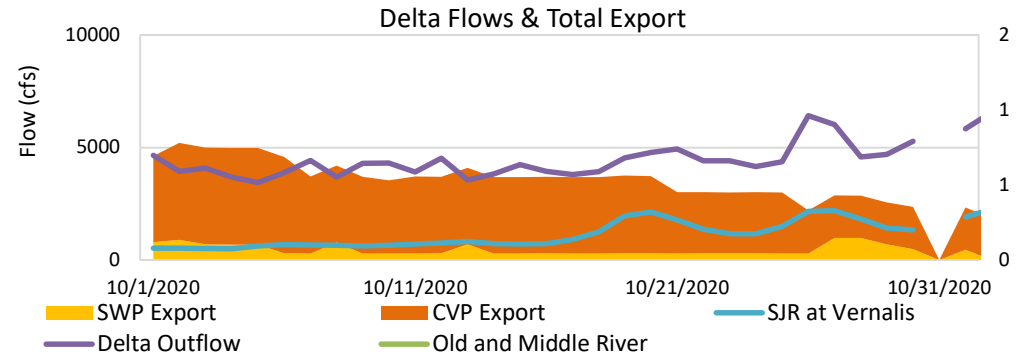
Project Operations



11/20/2020

Oroville storage running below average for this time of year, due to dry prior water year and lag in precipitation this year. Delta exports remaining low, with Oroville releases at typical low fall levels to preserve storage for 2021.

X2 location missing below; should be approximately 95 as of November 19.



Daily Average Flow

