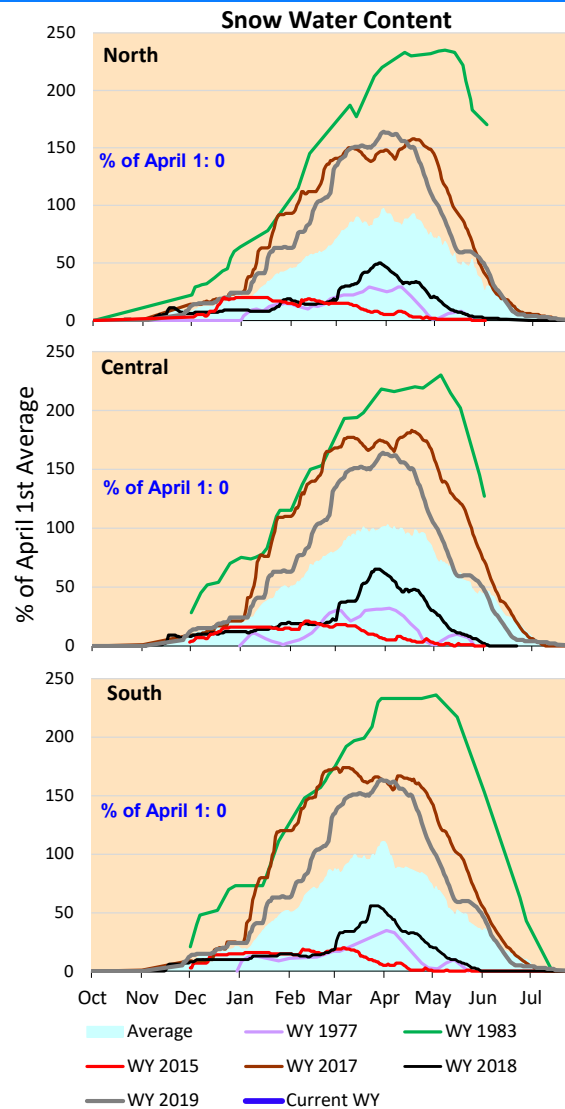
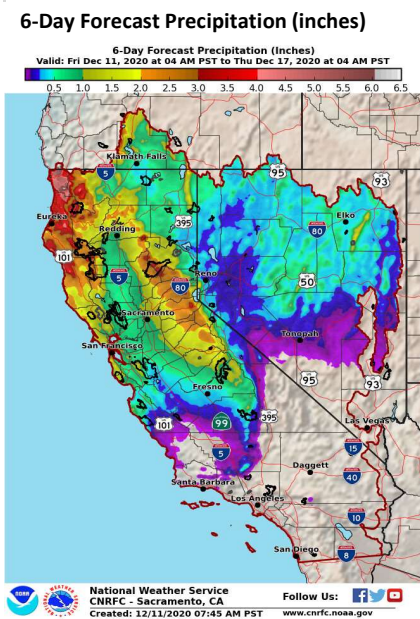


The first rainfall in about a month, but still small amounts. Expect dry watersheds to soak up the rainfall with little downstream runoff. The rainfall will be helpful in improving the computed Delta outflow index.

\*Note: Percentages in each plot refers to percent of average for this date. When historic data is unavailable, Snow Water Content Bar plot is not shown. The percent of historic average for each SWC location differs slightly from CDEC's report due to small discrepancies in historical data.



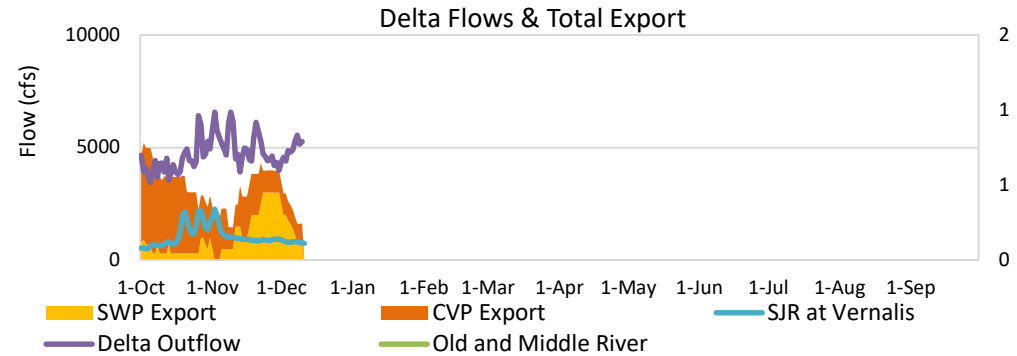


# Project Operations



12/11/2020

Oroville storage continues below average from dry 2020 and continued dry 2021 precipitation conditions. Delta exports remaining low waiting for first significant runoff of the year. Delta water quality requirements controlling current export operations.  
 X2 condition not shown below. Estimated X2 location for December 10 is 93 km.



## Daily Average Flow

As reported on 12/10

