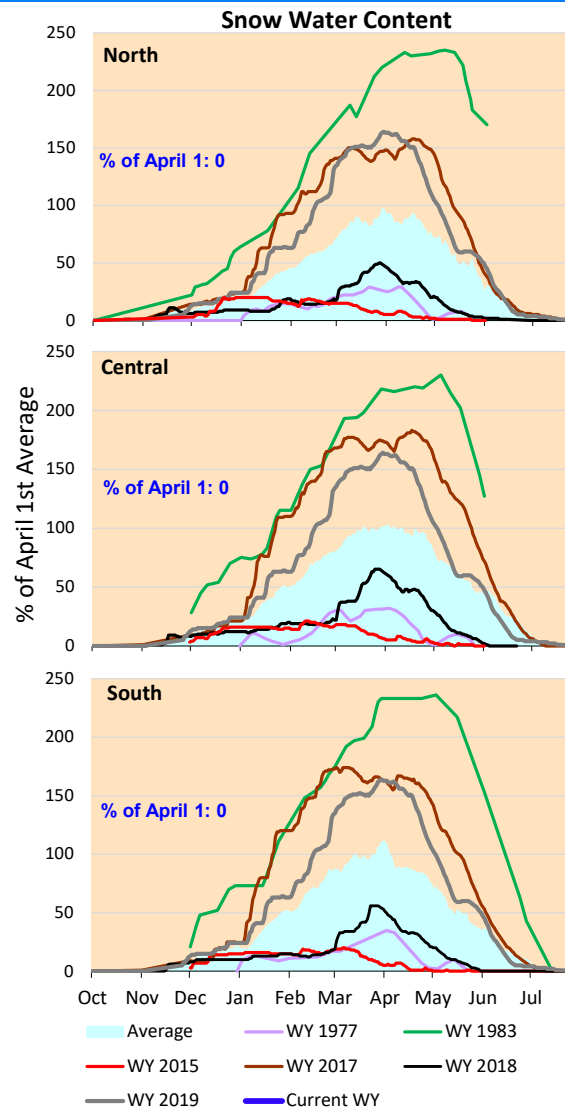
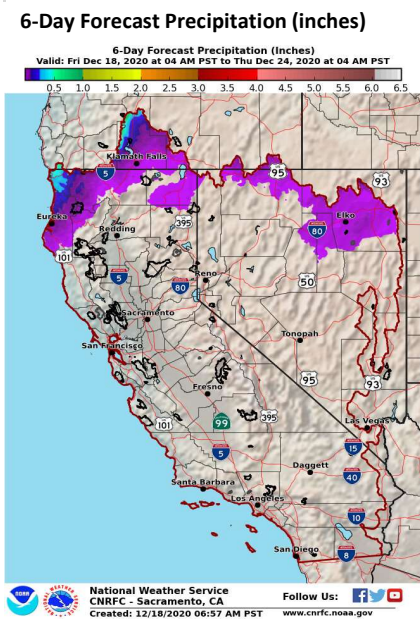
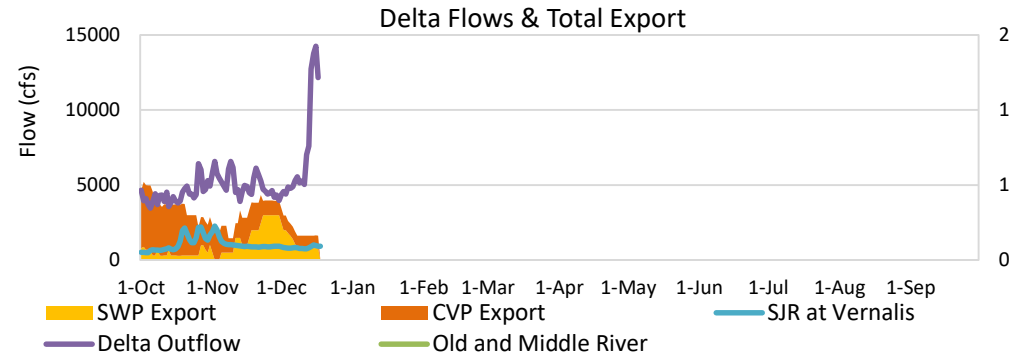


Some rainfall last week, but pretty limited and not seeing any significant increased streamflows. Forecast back to dry for the near term.

\*Note: Percentages in each plot refers to percent of average for this date. When historic data is unavailable, Snow Water Content Bar plot is not shown. The percent of historic average for each SWC location differs slightly from CDEC's report due to small discrepancies in historical data.

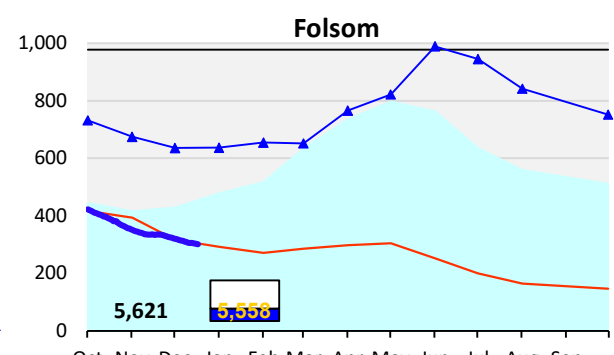
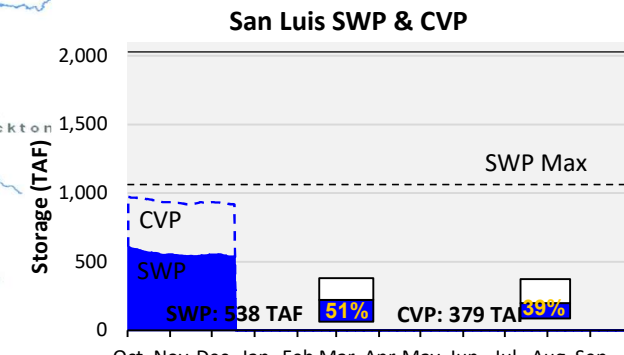
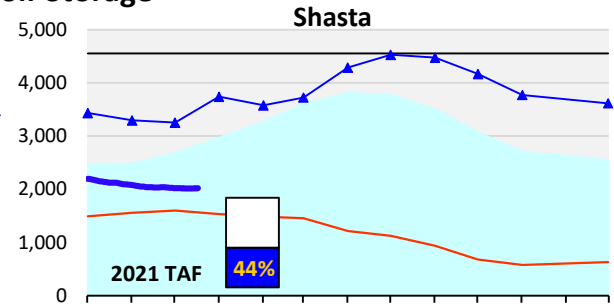
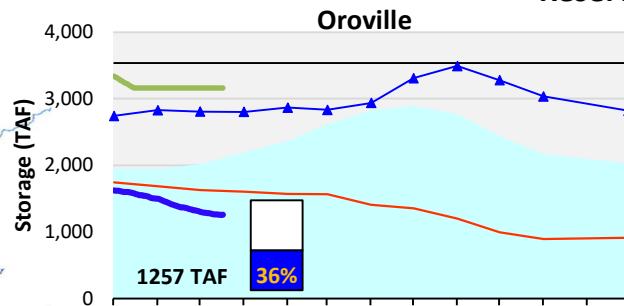
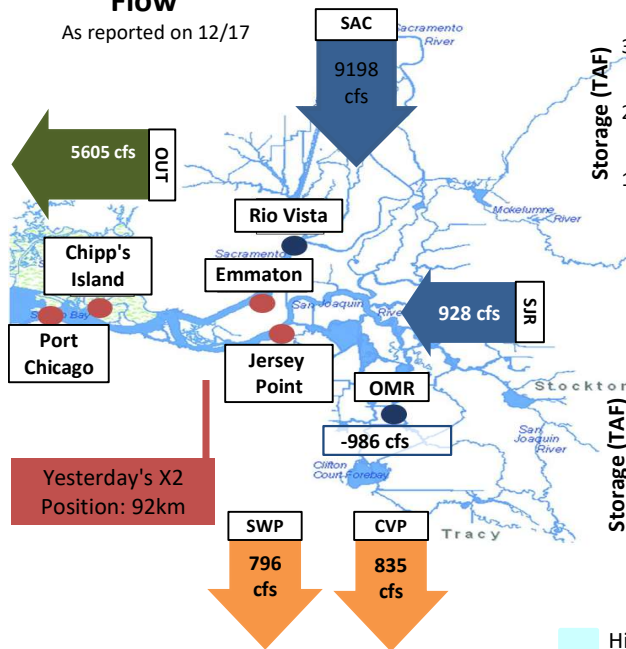


Oroville storage continues below average from dry 2020 and continued dry 2021 precipitation conditions. Reported Delta outflow increase is due to computed precipitation amount and not reliable. Measured Delta inflows increased only about 1,000 cfs while computed outflow jumped close to 10,000 cfs. Delta exports remaining low waiting for first significant runoff of the year. Delta water quality requirements controlling current export operations.



## Daily Average Flow

As reported on 12/17



Historical Average Current WY WY 1983 (Wet) WY 1977 (Dry) Capacity Flood Control Storage