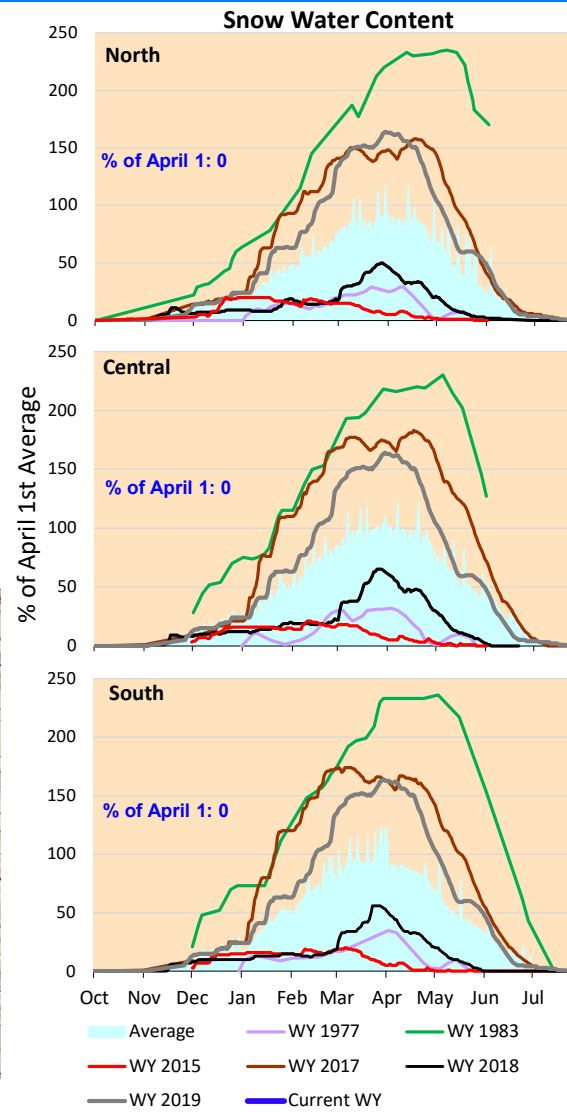
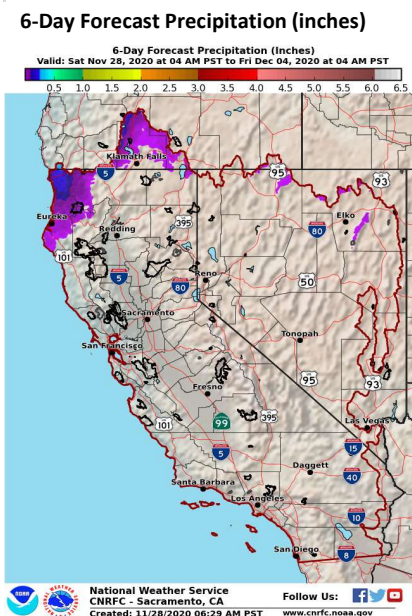


Continuing dry conditions with no significant runoff or snowpack. Forecast call for dry conditions through first week of December.

*Note: Percentages in each plot refers to percent of average for this date. When historic data is unavailable, Snow Water Content Bar plot is not shown. The percent of historic average for each SWC location differs slightly from CDEC's report due to small discrepancies in historical data.





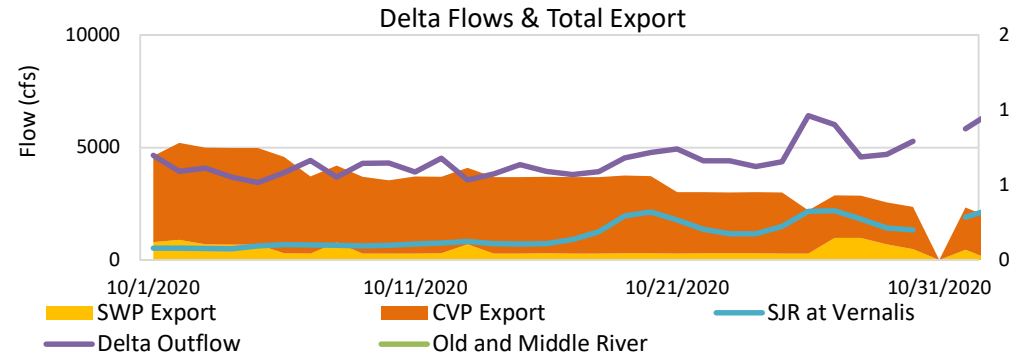
Project Operations



11/29/2020

Oroville storage running below average for this time of year, due to dry prior water year and lag in precipitation this year. Delta exports remaining low, with Oroville releases at typical low fall levels to preserve storage for 2021.

X2 location missing below; should be approximately 90 as of November 28.



Daily Average Flow

