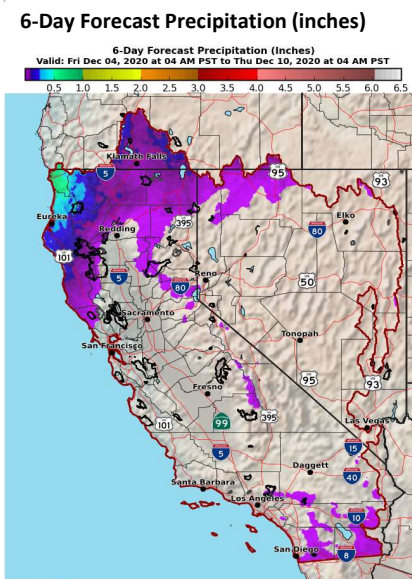
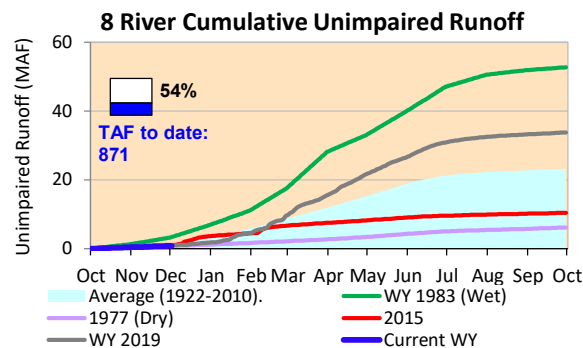
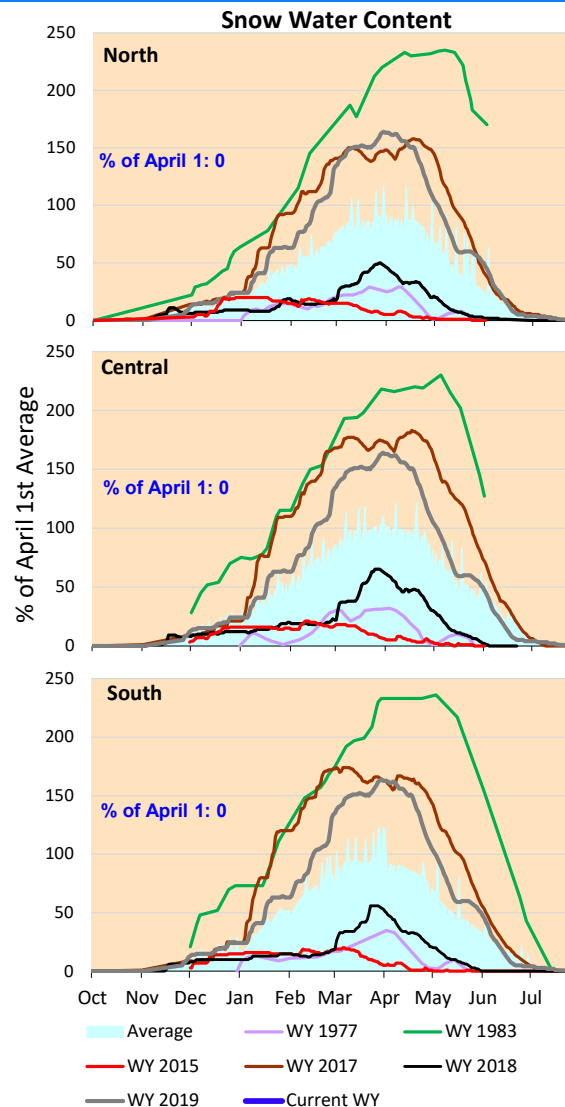


Continuing dry conditions with no significant runoff or snowpack. Forecast call for dry conditions through first week of December.

*Note: Percentages in each plot refers to percent of average for this date. When historic data is unavailable, Snow Water Content Bar plot is not shown. The percent of historic average for each SWC location differs slightly from CDEC's report due to small discrepancies in historical data.



National Weather Service
 CNRFC - Sacramento, CA
 Created: 12/04/2020 06:07 AM PST
 Follow Us: [f](#) [t](#) [i](#) [c](#)
www.cnrfc.noaa.gov





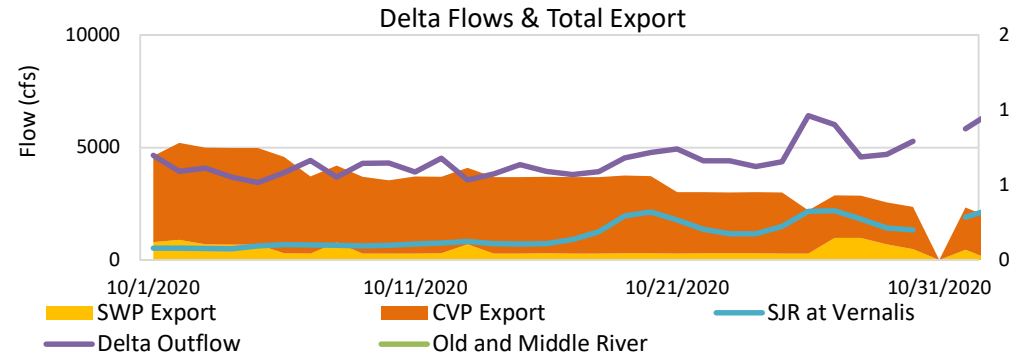
Project Operations



12/4/2020

Oroville storage running below average for this time of year, due to dry prior water year and lag in precipitation this year. Delta exports remaining low waiting for first significant runoff of the year. Delta water quality requirements controlling current export operations.

X2 location missing below; should be approximately 92 km as of December 3.



Daily Average Flow

