

# MODERNIZING THE SYSTEM: DELTA CONVEYANCE

## Five Reasons



Water from Northern California via the Sacramento-San Joaquin Delta typically provides nearly a third of the water used in Southern California. The state is heading an effort to modernize the aging State Water Project infrastructure to maintain supply reliability and provide environmental benefits. California has initiated an environmental review process for a single-tunnel project featuring two intakes with a proposed total diversion capacity of 6,000 cubic feet-per-second (alternatives also will be evaluated). As Metropolitan continues to increase local supplies and promote conservation in Southern California, investment in the state's water delivery system is an affordable, cost-effective way to secure the region's water future. Here are five reasons it is an essential project for Southern California:



### 1. CLIMATE CHANGE

With more severe droughts and precipitation increasingly falling as rain instead of snow, the project can capture enough water during big storms to store for drier times. It would also guard against increased salinity from sea-level rise.



### 2. THE BIG ONE

A new tunnel pipeline safeguards against a major earthquake that could collapse aging Delta levees and shut off water deliveries to millions of people, farms and businesses.



### 3. ECOSYSTEM HEALTH

By separating the water delivery system from the fragile ecosystem during important times for fish, modernized Delta conveyance will improve conditions for migrating and endangered fish populations.



### 4. AFFORDABILITY

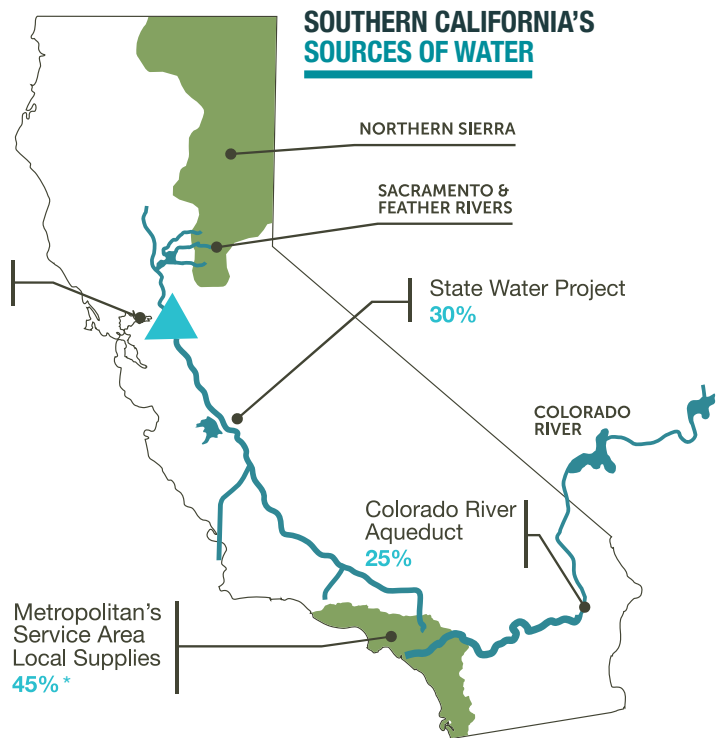
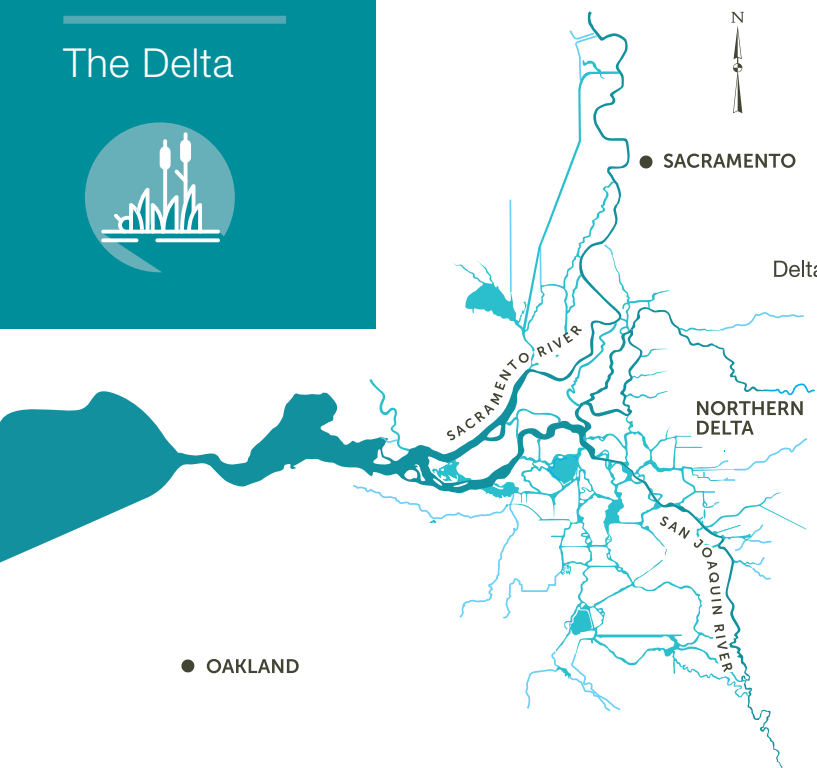
As California's largest water source, past investments have made this water supply an affordable option.



### 5. THE HIGHEST QUALITY = MORE LOCAL SUPPLIES

High-quality northern Sierra water provides a necessary foundation for local supply projects, including recycling programs and replenishment of groundwater basins.

## The Delta



\* This includes supplies from the City of Los Angeles' Los Angeles Aqueduct



## An Essential Part of the Bigger Picture



### CALIFORNIA WATER RESILIENCE PORTFOLIO

Gov. Newsom has prioritized Delta conveyance as part of the state's Water Resilience Portfolio, a plan to ensure California has a reliable water supply for future generations in the face of climate change and other challenges. Metropolitan has used this approach for decades – diversifying our water supply by reducing future reliance on the Delta, investing in local supply projects and promoting water efficiency throughout the region. Modernizing the aging water delivery infrastructure in the Delta is one of many steps we must take to ensure the region's water resiliency.

Water is the lifeblood of our state, sustaining communities, wildlife and our economy. For more than a year, my Administration has worked to assemble a blueprint to secure this vital and limited resource into the future in a way that builds climate resilience for all communities and sustains native fish and the habitat they need to thrive.

- Gov. Gavin Newsom  
on the California Water Resilience Portfolio

## WHO BENEFITS FROM MODERNIZING THE STATE WATER PROJECT



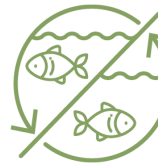
**MILLIONS OF CALIFORNIANS**  
27 MILLION CALIFORNIANS, INCLUDING  
19 MILLION SOUTHERN CALIFORNIA  
RESIDENTS



**UNDERSERVED COMMUNITIES**  
ABOUT 9.5 MILLION PEOPLE IN SOUTHERN  
CALIFORNIA'S UNDERSERVED COMMUNITIES  
WHO RELY ON ACCESS TO CLEAN,  
AFFORDABLE WATER



**FARMS** NEARLY 750,000 ACRES OF  
FARMLAND, A VITAL PART OF THE CALIFORNIA  
AND U.S. ECONOMY



**NATIVE FISH POPULATIONS**  
A DECLINING DELTA ECOSYSTEM THAT WILL  
BENEFIT FROM UPDATED INFRASTRUCTURE  
THAT REDUCES ENVIRONMENTAL CONFLICTS



**THE ECONOMY** A \$5 TRILLION CALIFORNIA  
ECONOMY THAT IS SUSTAINED BY A RELIABLE  
WATER SUPPLY

### OUR MISSION

The mission of the Metropolitan Water District of Southern California is to provide its service area with adequate and reliable supplies of high-quality water to meet present and future needs in an environmentally and economically responsible way.

### ABOUT METROPOLITAN

The Metropolitan Water District of Southern California is a state-established cooperative of 26 member agencies – cities and public water agencies – that serve 19 million people in six counties. Metropolitan imports water from the Colorado River and Northern California to supplement local supplies and helps its members develop increased water conservation, recycling, storage and other resource management programs.

### BE INFORMED, BE INVOLVED

[www.mwdh2o.com](http://www.mwdh2o.com)



@mwdh2o



THE METROPOLITAN WATER DISTRICT  
OF SOUTHERN CALIFORNIA

November 2020