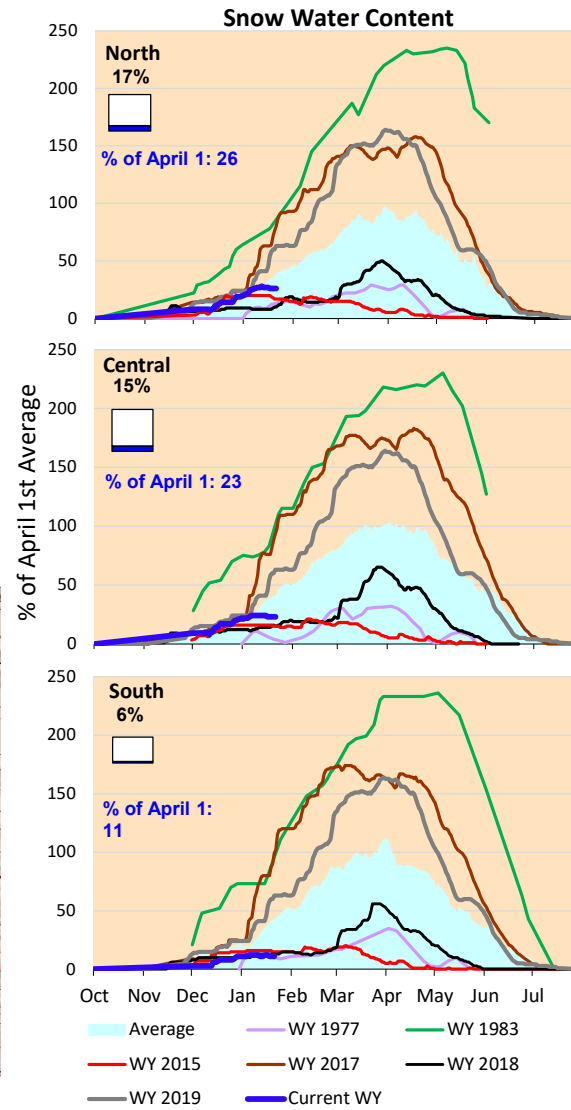
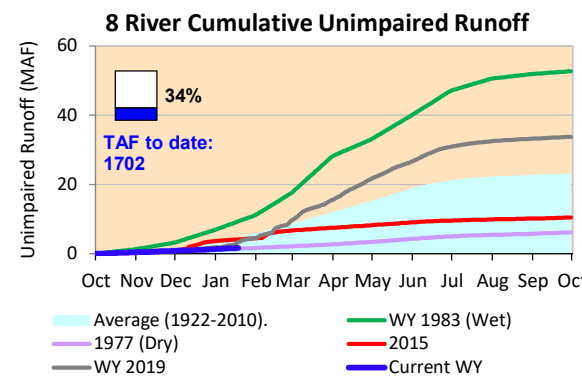
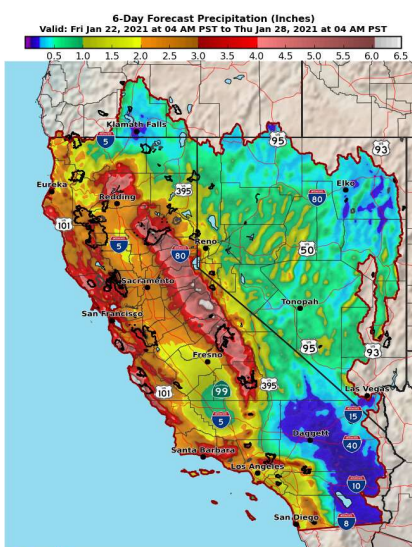


Finally seeing some nice storms in the forecast next week, with (maybe) more on the way after that. Precipitation forecast on the map below look to be the best we've had this year. Precipitation and Snowpack still in extremely bad shape to date this year; we've got a big hole dig out of.

*Note: Percentages in each plot refers to percent of average for this date. When historic data is unavailable, Snow Water Content Bar plot is not shown. The percent of historic average for each SWC location differs slightly from CDEC's report due to small discrepancies in historical data.

6-Day Forecast Precipitation (inches)





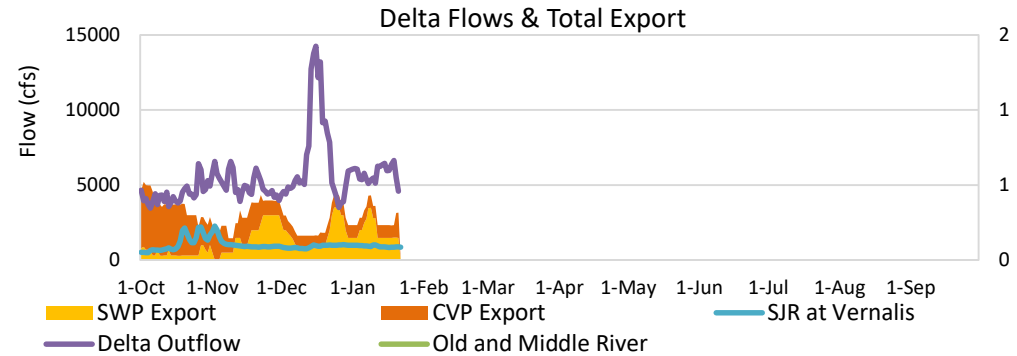
Project Operations



1/22/2021

Baseline winter inflows with delta water quality controlling operations. Minimal upstream reservoir releases, with Oroville and Folsom Reservoirs continuing to lose storage (definitely not normal for this time of the year.)

Note: Yesterday's X-2 Position estimated as 93 km.



Daily Average Flow

As reported on 1/21

