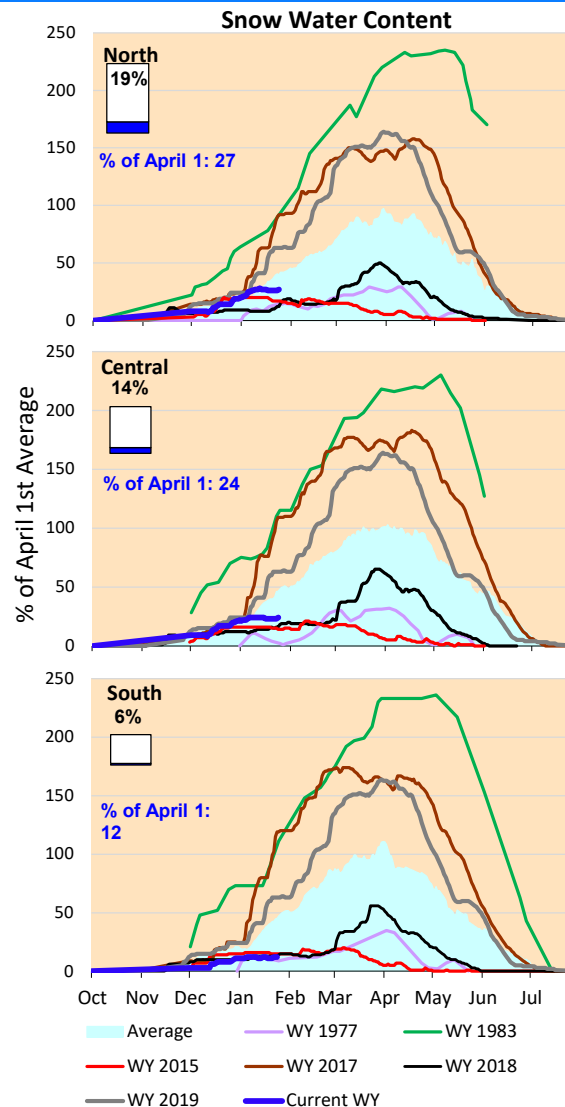
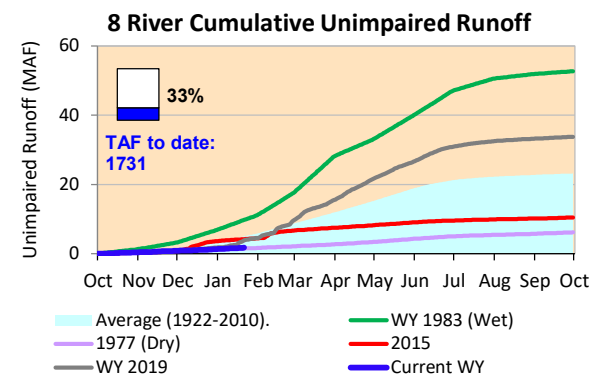
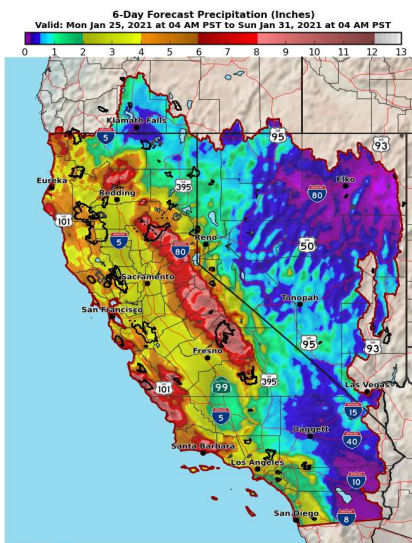


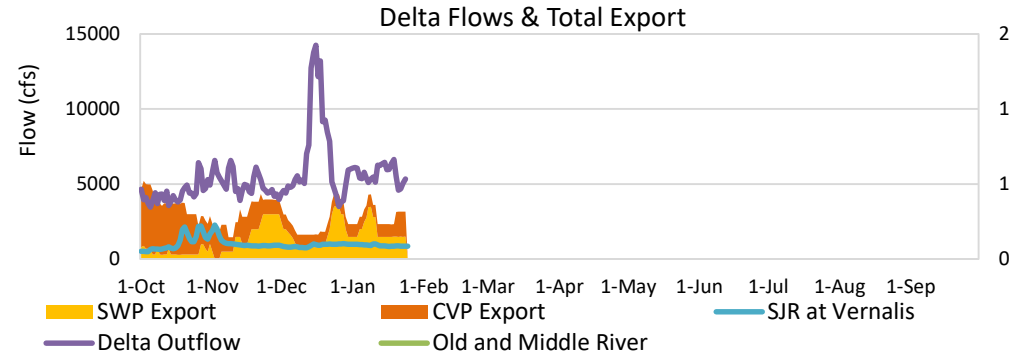
Finally seeing some nice storms in the forecast this week, with (maybe) more on the way after that. Very good precipitation forecast on the map below with longer term forecasts for some more next week. Precipitation and Snowpack still in extremely bad shape to date this year; we've got a big hole dig out of.

\* Note: Percentages in each plot refers to percent of average for this date. When historic data is unavailable, Snow Water Content Bar plot is not shown. The percent of historic average for each SWC location differs slightly from CDEC's report due to small discrepancies in historical data.

### 6-Day Forecast Precipitation (inches)



Baseline winter inflows with delta water quality controlling operations. Minimal upstream reservoir releases, with Oroville and Folsom Reservoirs continuing to lose storage (definitely not normal for this time of the year.)



## Daily Average Flow

As reported on 1/24

