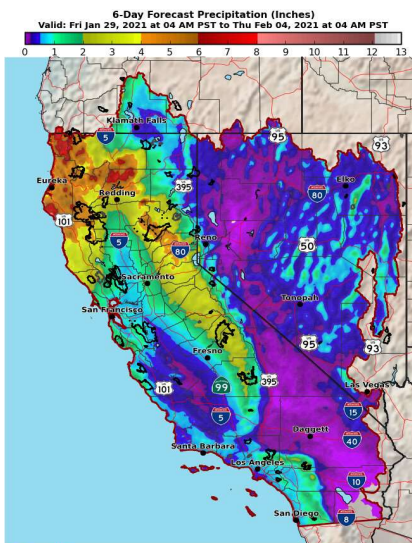


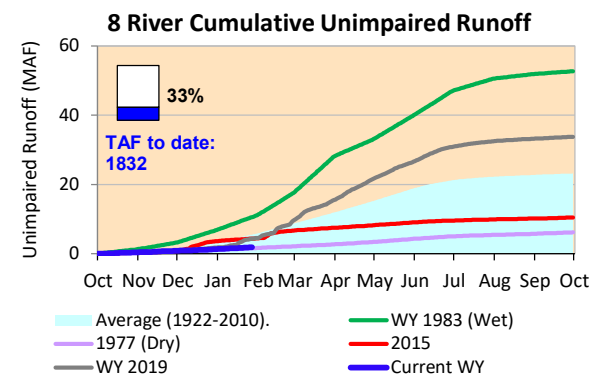
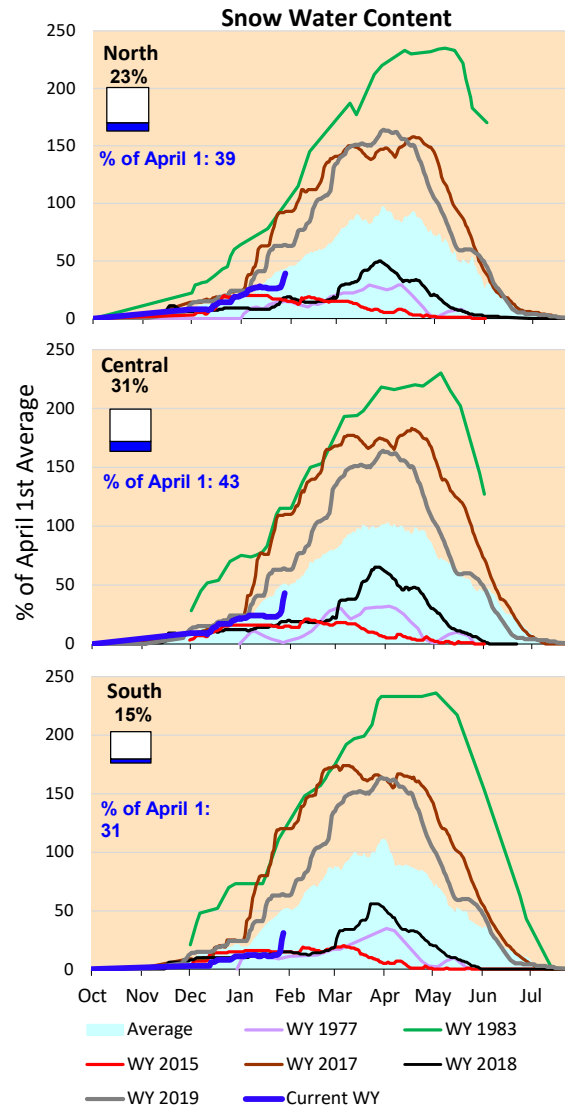
Finally seeing some nice storms in the forecast this week, with some more on the way next week. Decent precipitation forecast on the map but doesn't look like a game changer so far. Precipitation and Snowpack still in extremely bad shape to date this year; we've got a big hole dig out of. The snowpack looks like its outperforming the precipitation so far; with runoff still way below average.

*Note: Percentages in each plot refers to percent of average for this date. When historic data is unavailable, Snow Water Content Bar plot is not shown. The percent of historic average for each SWC location differs slightly from CDEC's report due to

6-Day Forecast Precipitation (inches)

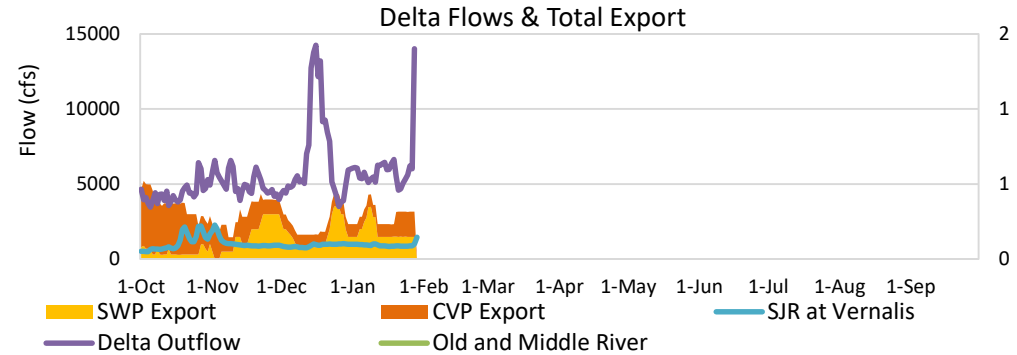


National Weather Service
CNRFC - Sacramento, CA
Created: 01/29/2021 07:05 AM PST
www.cnrfc.noaa.gov



Baseline winter inflows with delta water quality controlling operations. Minimal upstream reservoir releases, with Shasta, Oroville and Folsom Reservoirs having slight storage increases. Delta outflow increase based on estimated local precipitation with no significant bump in Sacramento River inflows yet.

Estimated X2 location yesterday is 93 kilometers, so generally poor Delta water quality.



Daily Average Flow

As reported on 1/28

