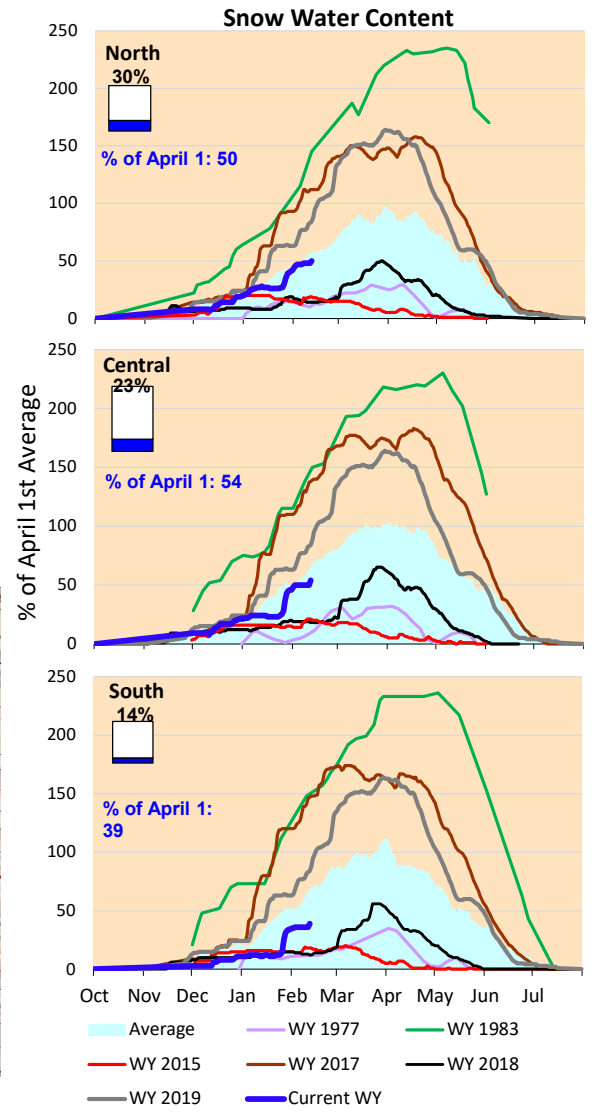
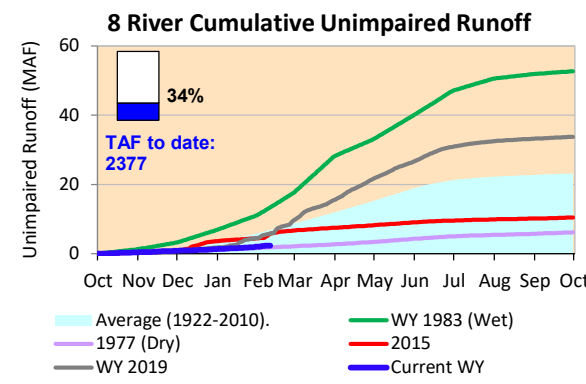
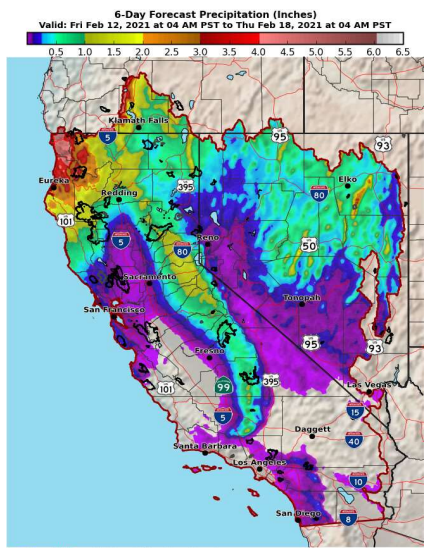


Mostly dry last week, but had some new storm activity starting yesterday (Thursday). Some precipitation in the forecast for the weekend and early next week.

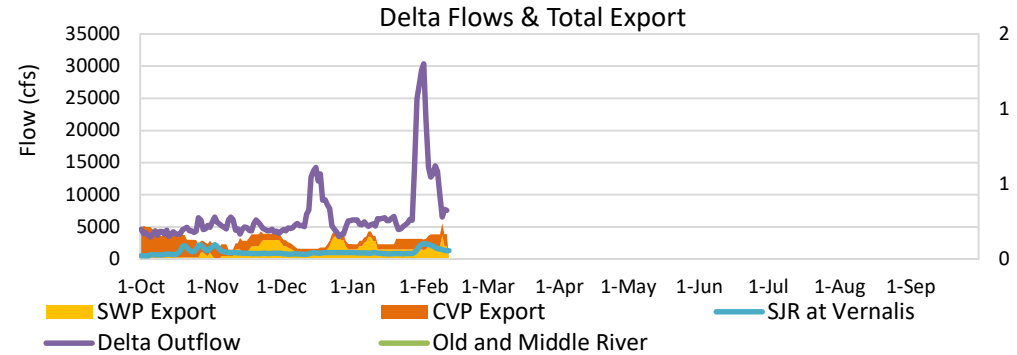
*Note: Percentages in each plot refers to percent of average for this date. When historic data is unavailable, Snow Water Content Bar plot is not shown. The percent of historic average for each SWC location differs slightly from CDEC's report due to small discrepancies in historical data.

6-Day Forecast Precipitation (inches)



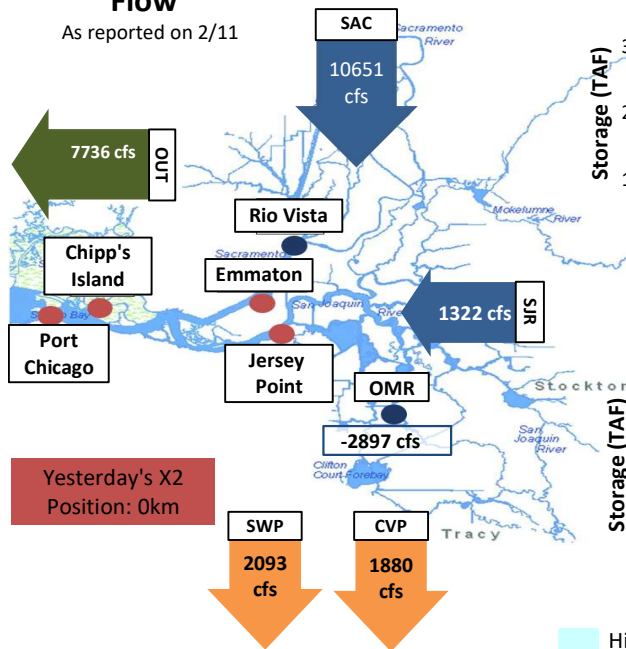
Delta inflows dropped last week, with storms ending. Minimal upstream reservoir releases, with Shasta, Oroville and Folsom Reservoirs having continued small storage increases. Sacramento River inflows dropping to baseline levels after last week's storms ended.

Estimated X2 location yesterday is 84 kilometers, so Delta water quality cleaned up a little.



Daily Average Flow

As reported on 2/11



Yesterday's X2 Position: 0km

