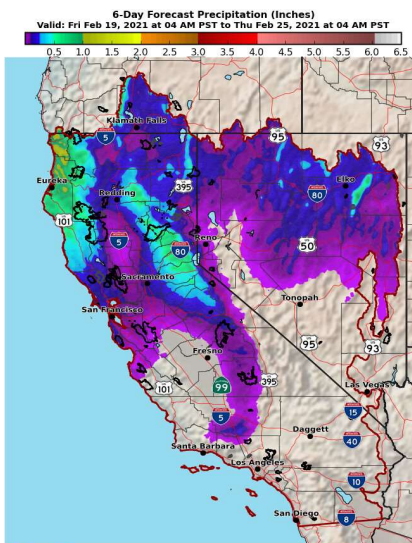


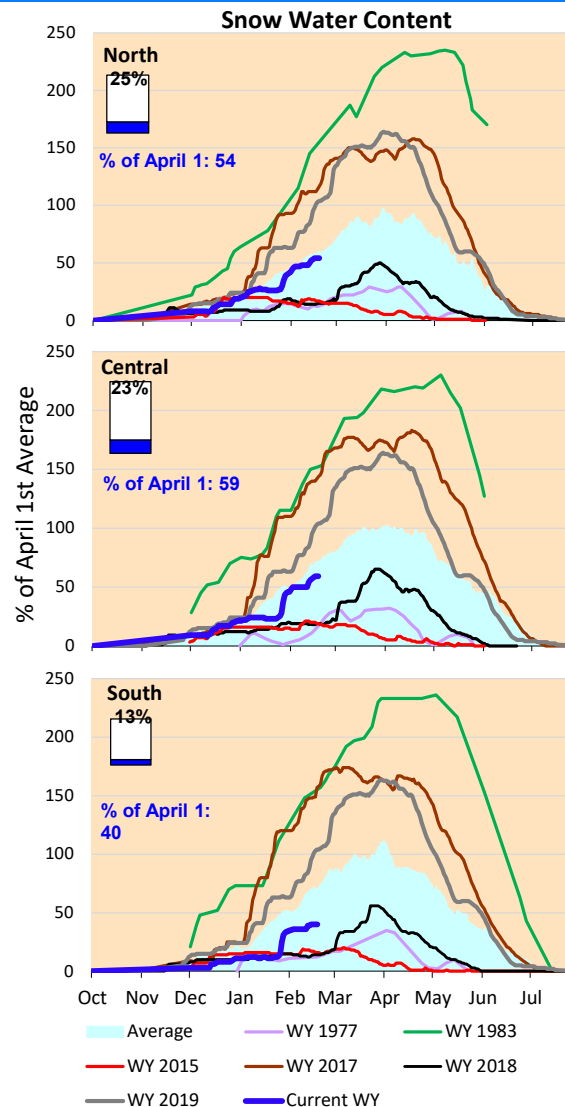
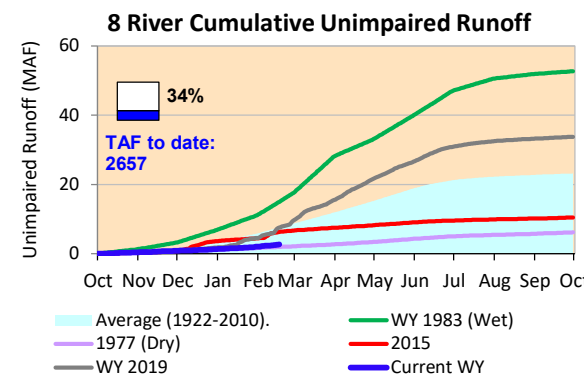
Continuing minor amounts of precipitation, with small amounts of precipitation in the forecast for the weekend and early next week.

\*Note: Percentages in each plot refers to percent of average for this date. When historic data is unavailable, Snow Water Content Bar plot is not shown. The percent of historic average for each SWC location differs slightly from CDEC's report due to small discrepancies in historical data.

### 6-Day Forecast Precipitation (inches)

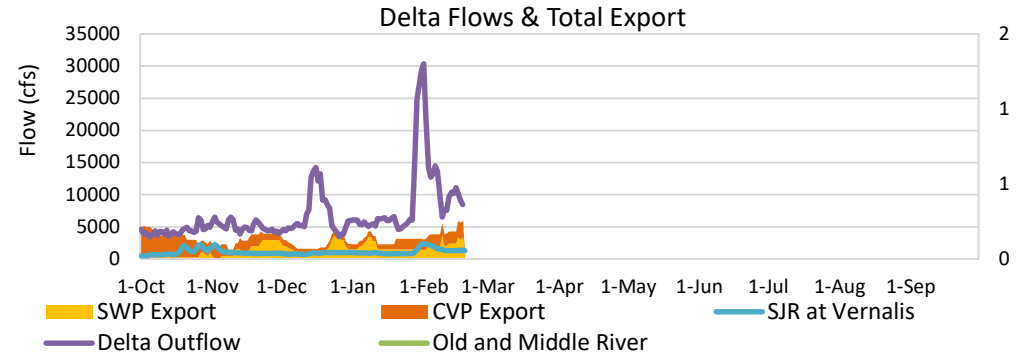


National Weather Service  
CNRFC - Sacramento, CA  
Created: 02/19/2021 06:35 AM PST  
Follow Us: [f](#) [t](#) [i](#) [c](#)  
[www.cnrfc.noaa.gov](http://www.cnrfc.noaa.gov)



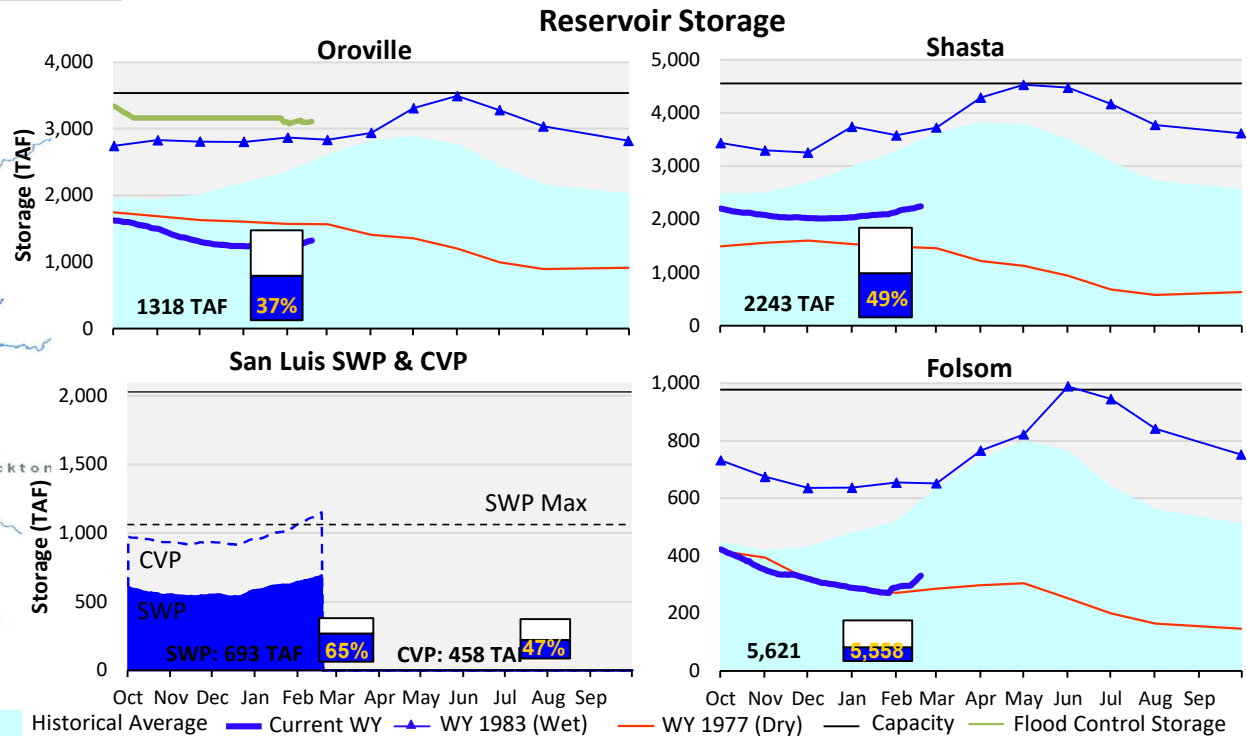
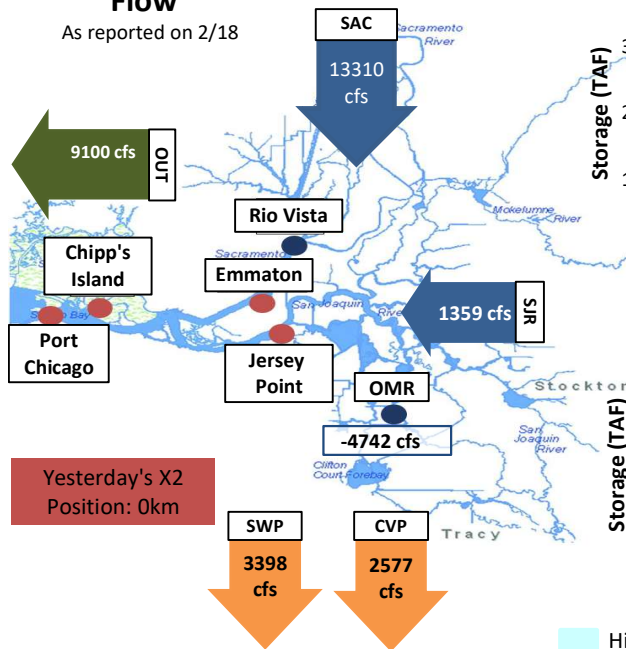
Delta inflows dropped last week, with storms ending. Minimal upstream reservoir releases, with Shasta, Oroville and Folsom Reservoirs having continued small storage increases. Sacramento River inflows seemed to have leveled off to a somewhat higher baseline with last week's storms ending.

Estimated X2 location yesterday is 76kilometers, so Delta water quality cleaned up a little.



## Daily Average Flow

As reported on 2/18



Historical Average — Current WY — WY 1983 (Wet) — WY 1977 (Dry) — Capacity — Flood Control Storage