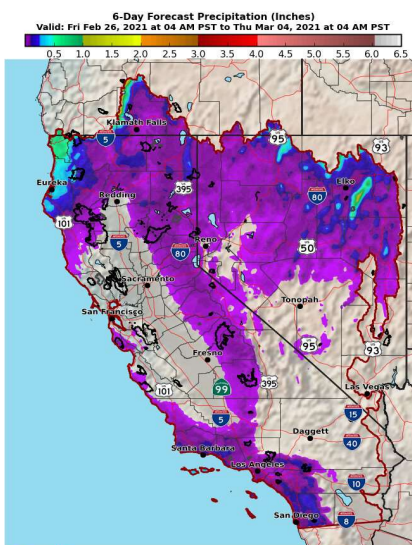


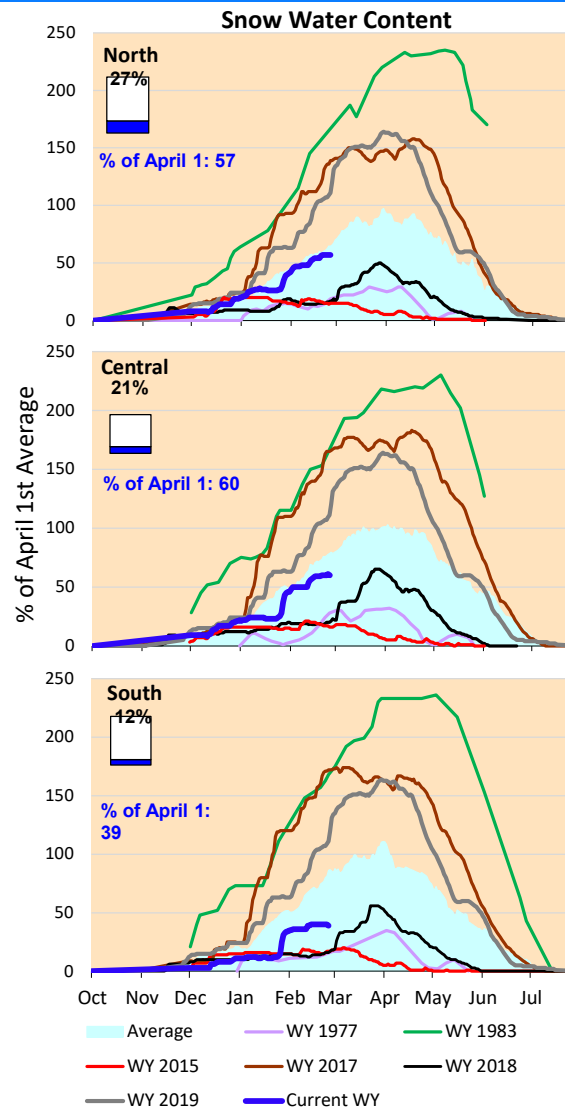
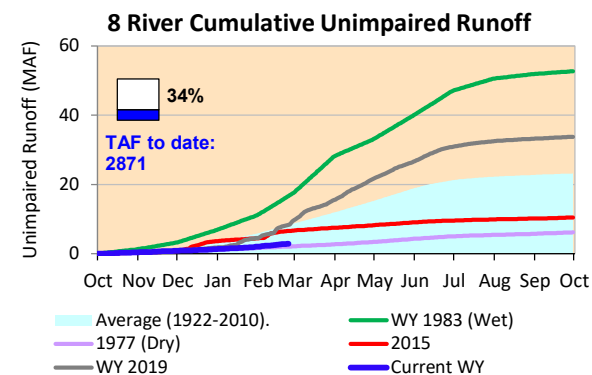
Continuing minor amounts of precipitation, with small amounts of precipitation in the forecast for the weekend and early next week.

*Note: Percentages in each plot refers to percent of average for this date. When historic data is unavailable, Snow Water Content Bar plot is not shown. The percent of historic average for each SWC location differs slightly from CDEC's report due to small discrepancies in historical data.

6-Day Forecast Precipitation (inches)

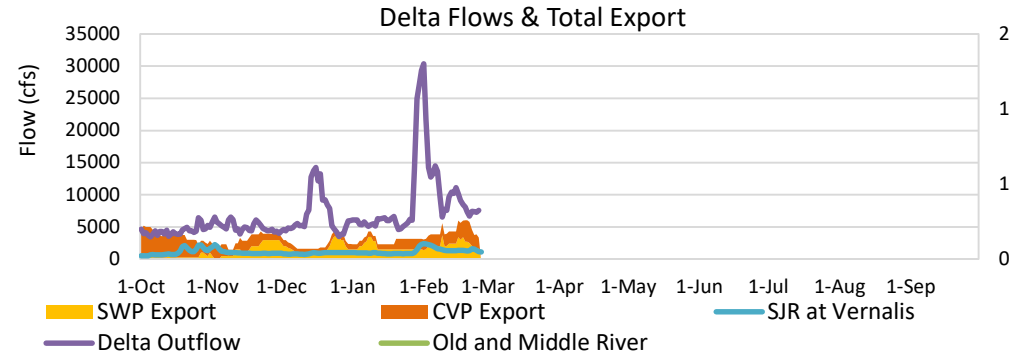


National Weather Service
 CNRFC - Sacramento, CA
 Created: 02/26/2021 07:10 AM PST
 Follow Us: [f](#) [t](#) [i](#) [c](#)
www.cnrfc.noaa.gov



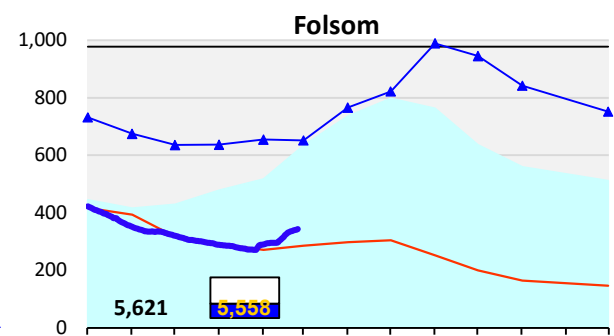
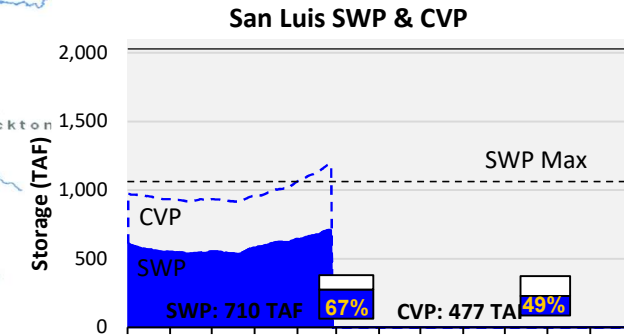
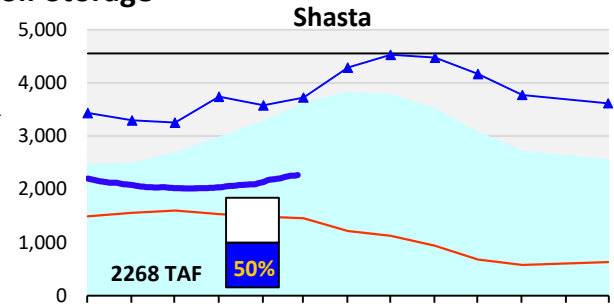
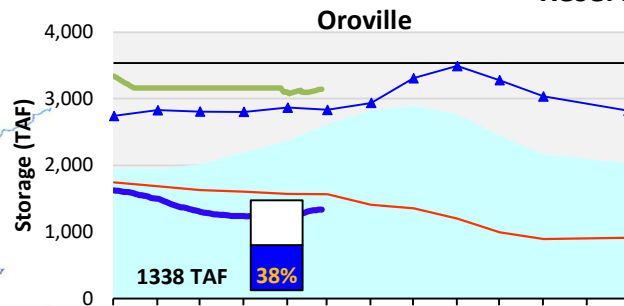
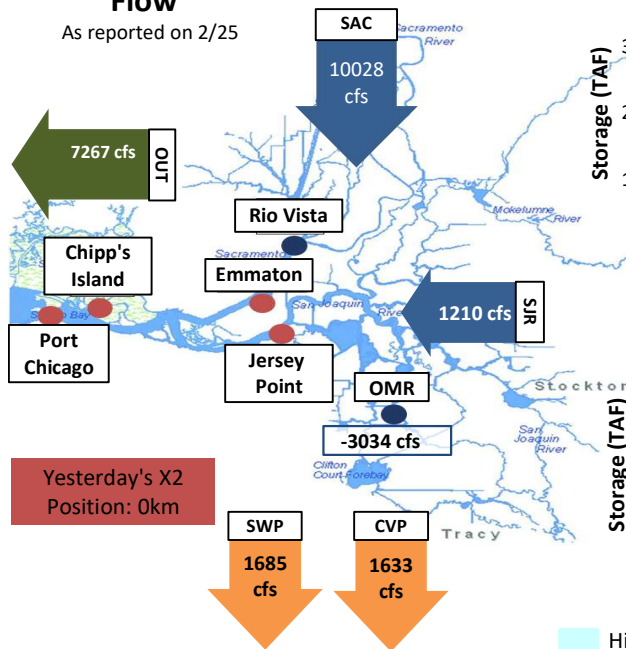
Minimal upstream reservoir releases, with Shasta, Oroville and Folsom Reservoirs having continued small storage increases. Sacramento River inflows seemed to have leveled off to a somewhat higher baseline with last week's storms ending.

Estimated X2 location yesterday is 83 kilometers, with west Delta salinity increasing somewhat.



Daily Average Flow

As reported on 2/25



Historical Average — Current WY — WY 1983 (Wet) — WY 1977 (Dry) — Capacity — Flood Control Storage