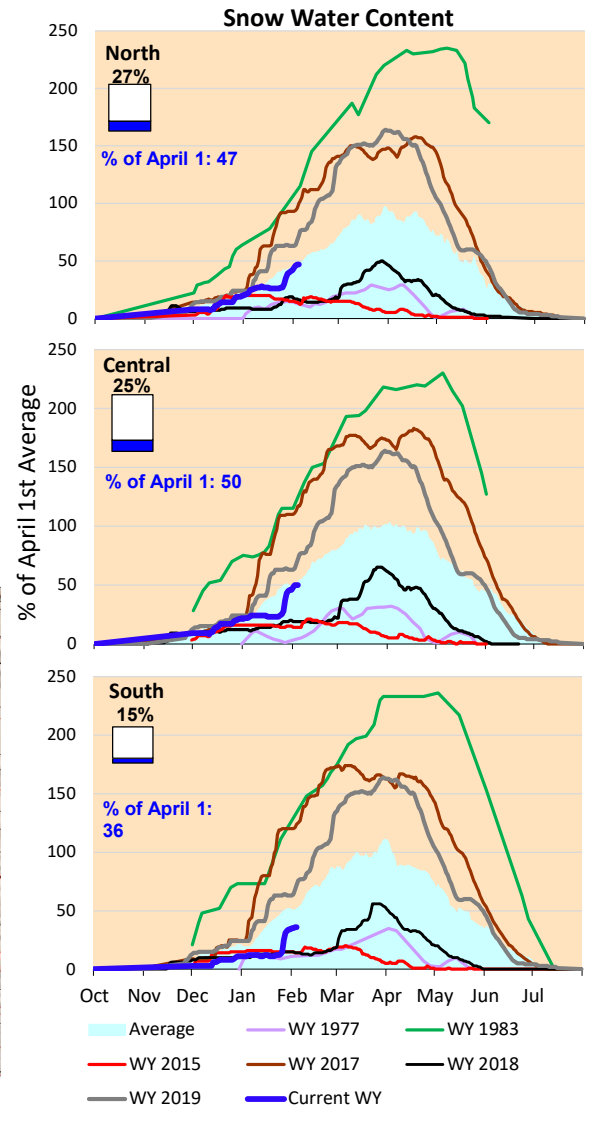
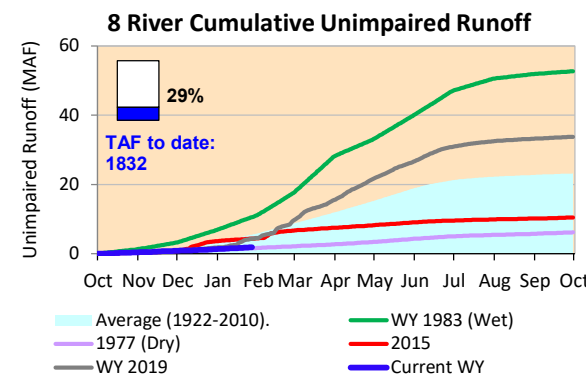
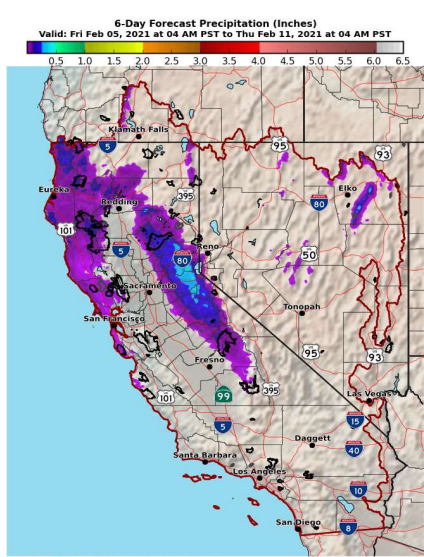


Some good storms last week, but they underperformed some of the earlier forecasts. Good bump in snowpack and some increase in runoff, with watersheds showing signs of being saturated and starting to produce some runoff. Minimal precipitation in this week's forecast.

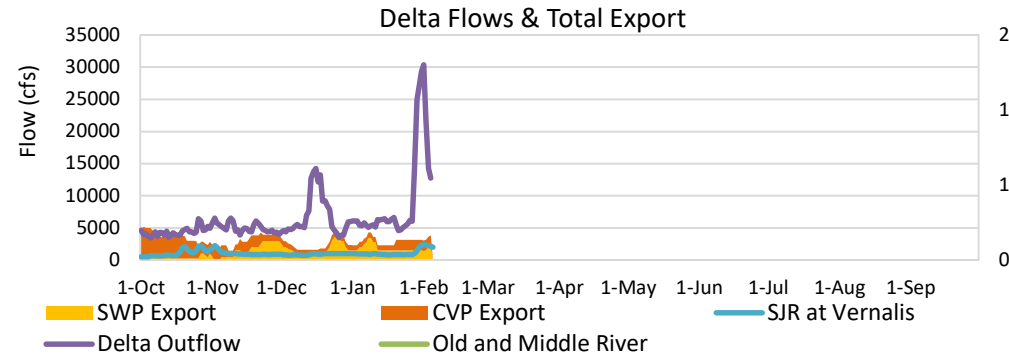
*Note: Percentages in each plot refers to percent of average for this date. When historic data is unavailable, Snow Water Content Bar plot is not shown. The percent of historic average for each SWC location differs slightly from CDEC's report due to small discrepancies in historical data.

6-Day Forecast Precipitation (inches)



First significant inflow of the season, with delta water quality starting to improve. Minimal upstream reservoir releases, with Shasta, Oroville and Folsom Reservoirs having slight storage increases. Sacramento River inflows had their first significant inflow of the year, mostly resulting from low elevation watersheds.

Estimated X2 location yesterday is 84 kilometers, so Delta water quality cleaned up a little.



Daily Average Flow

As reported on 2/4

