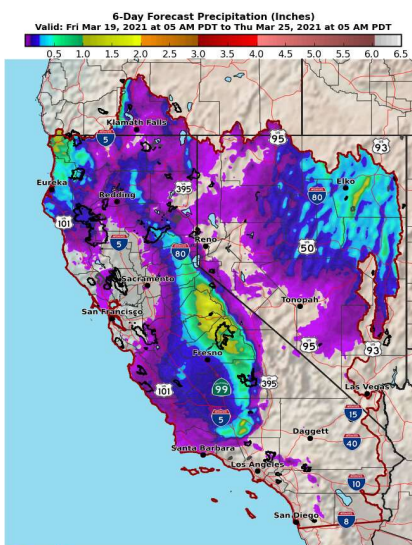


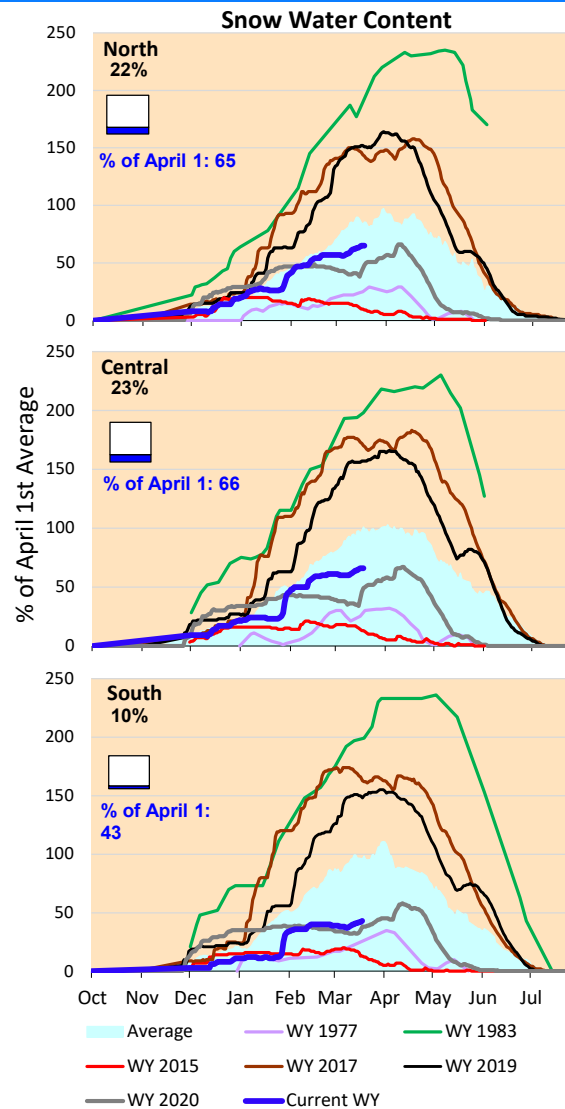
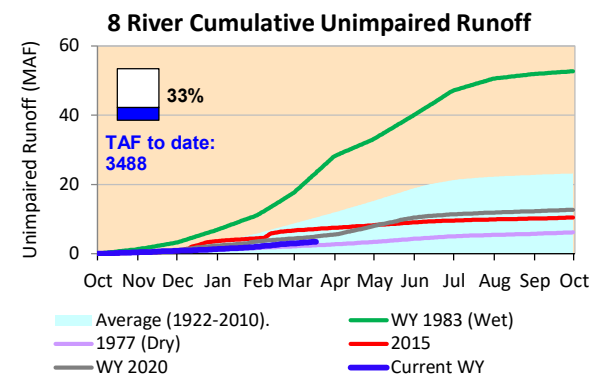
A few storms this last weekend, with small increases in snow pack conditions. Forecast for very modest rainfall through next week. The end of March signals the end of the major precipitation season in northern California, making it more likely that we're looking at another drought year.

\*Note: Percentages in each plot refers to percent of average for this date. When historic data is unavailable, Snow Water Content Bar plot is not shown. The percent of historic average for each SWC location differs slightly from CDEC's report due to small discrepancies in historical data.

### 6-Day Forecast Precipitation (inches)

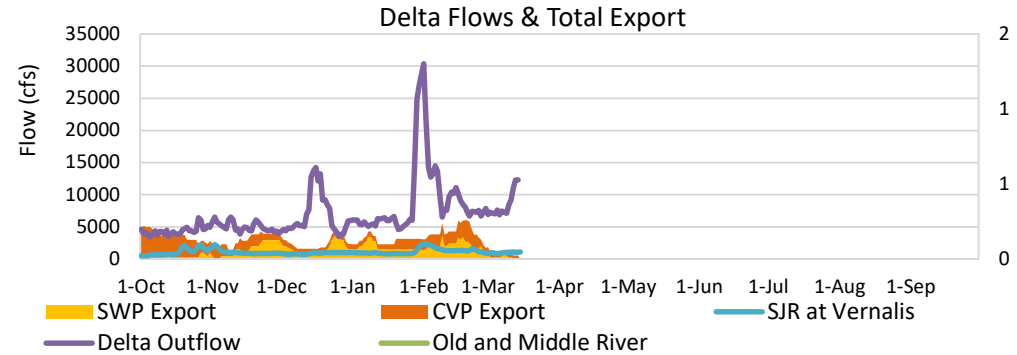


National Weather Service  
CNRFC - Sacramento, CA  
Created: 03/19/2021 07:05 AM PDT  
Follow Us: [f](#) [t](#) [i](#) [c](#)  
[www.cnrfc.noaa.gov](http://www.cnrfc.noaa.gov)



Some increased Delta inflows this last week with improvements in water quality. Exports have been low in March. Upstream reservoirs are at low releases rates with storage creeping up at Oroville and Shasta.

Note: Yesterday's X-2 Position is estimated.



## Daily Average Flow

As reported on 3/14

