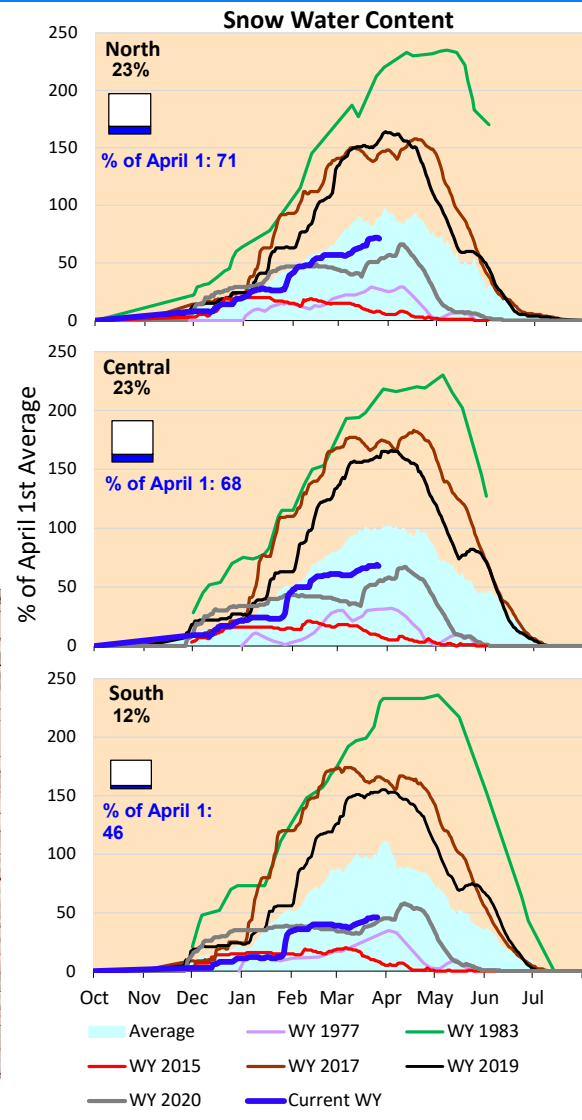
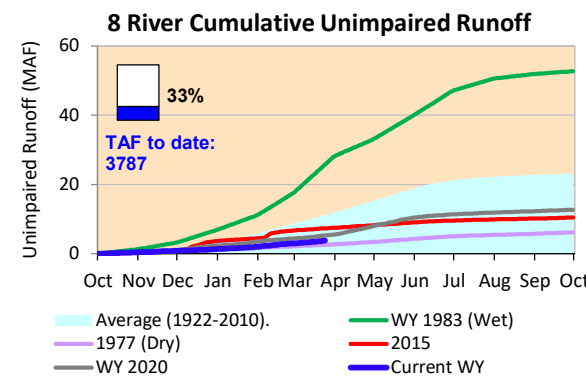
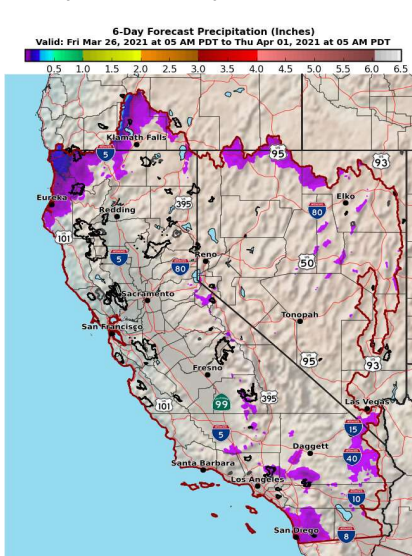


Very minor recent storm activity and nothing projected over the next week. Actual runoff continuing at very late rates in parallel with low precipitation totals.

*Note: Percentages in each plot refers to percent of average for this date. When historic data is unavailable, Snow Water Content Bar plot is not shown. The percent of historic average for each SWC location differs slightly from CDEC's report due to small discrepancies in historical data.

6-Day Forecast Precipitation (inches)





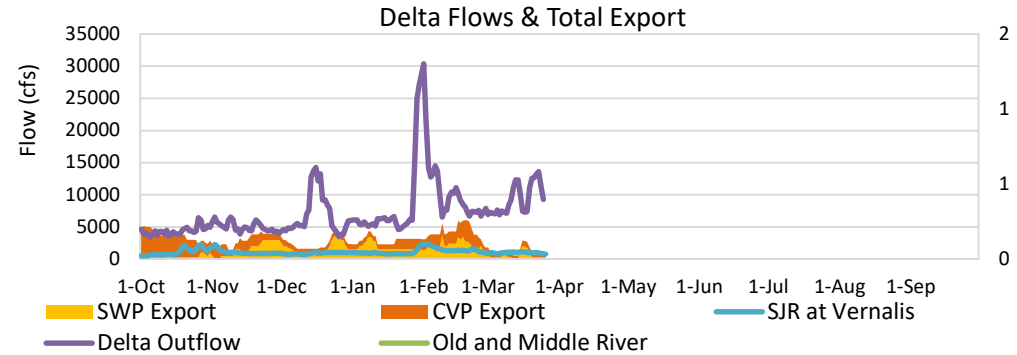
Project Operations



3/26/2021

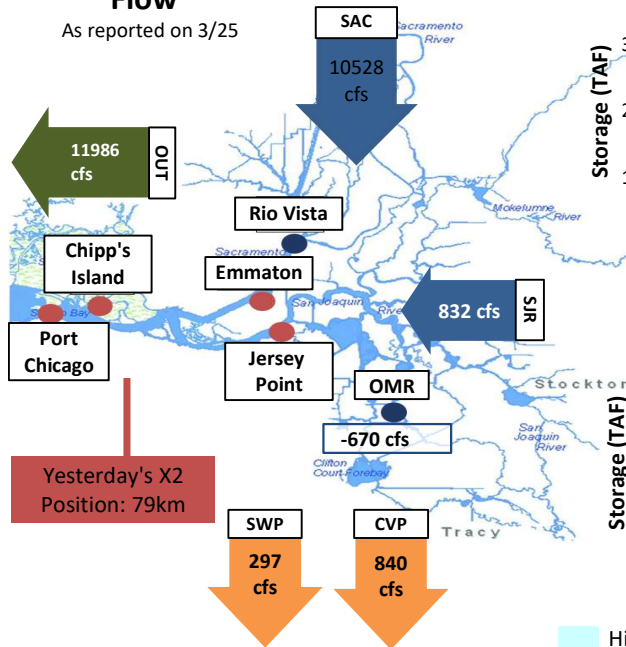
Small increase in Delta inflows last week has peaked and inflows are now declining. Exports have been low in March and are projected low for the remainder of the month. Upstream reservoirs are at low releases rates with storage creeping up at Oroville and Shasta.

Note: Yesterday's X-2 Position is calculated.



Daily Average Flow

As reported on 3/25



Reservoir Storage

