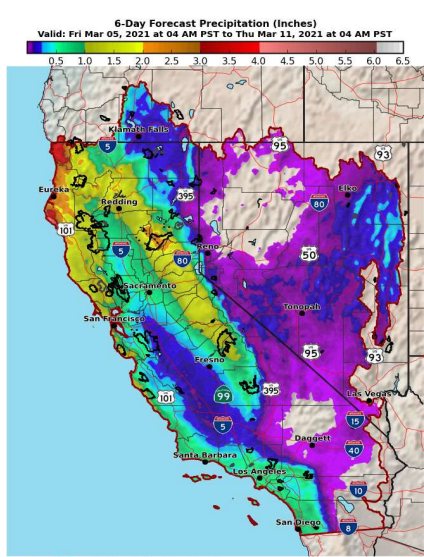


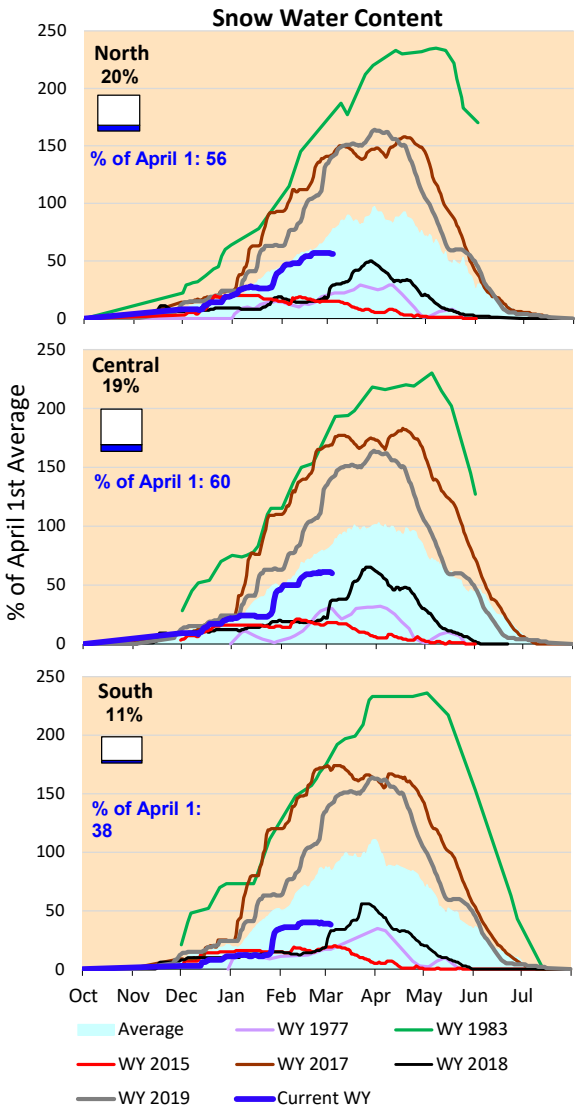
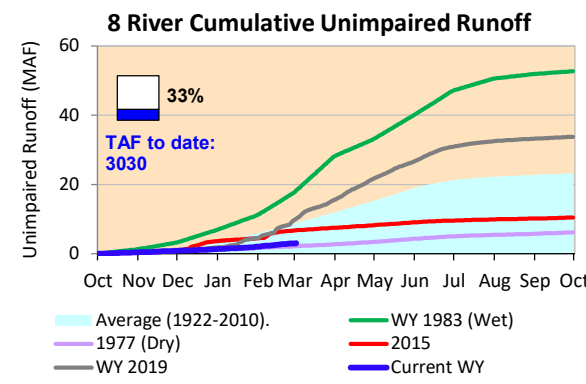
Minor rainfall projected for the next few days. Seasonal precipitation and runoff are both well below normal, along with snow content.

*Note: Percentages in each plot refers to percent of average for this date. When historic data is unavailable, Snow Water Content Bar plot is not shown. The percent of historic average for each SWC location differs slightly from CDEC's report due to small discrepancies in historical data.

6-Day Forecast Precipitation (inches)

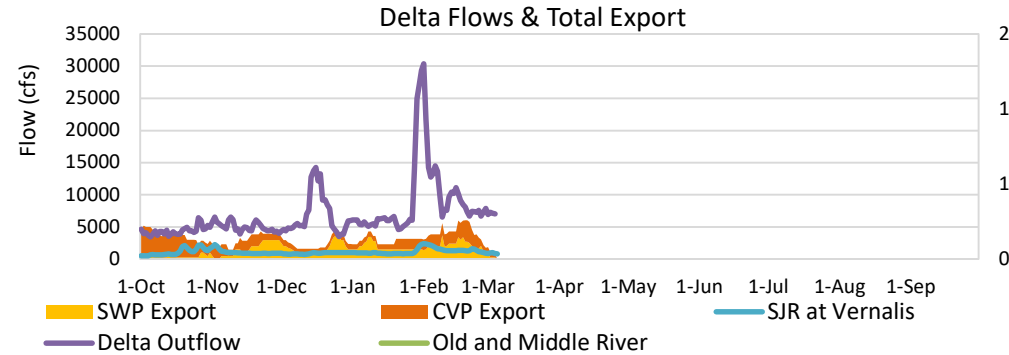


National Weather Service
CNRFC - Sacramento, CA
Created: 03/05/2021 07:22 AM PST
www.cnrfc.noaa.gov



Minimum upstream reservoir releases, with Shasta, Oroville and Folsom Reservoirs maintaining storage levels. Sacramento River inflows dropping with the lack of significant precipitation events the last two weeks.

Estimated X2 location yesterday is 84 kilometers, with west Delta salinity increasing somewhat.



Daily Average Flow

As reported on 3/4

