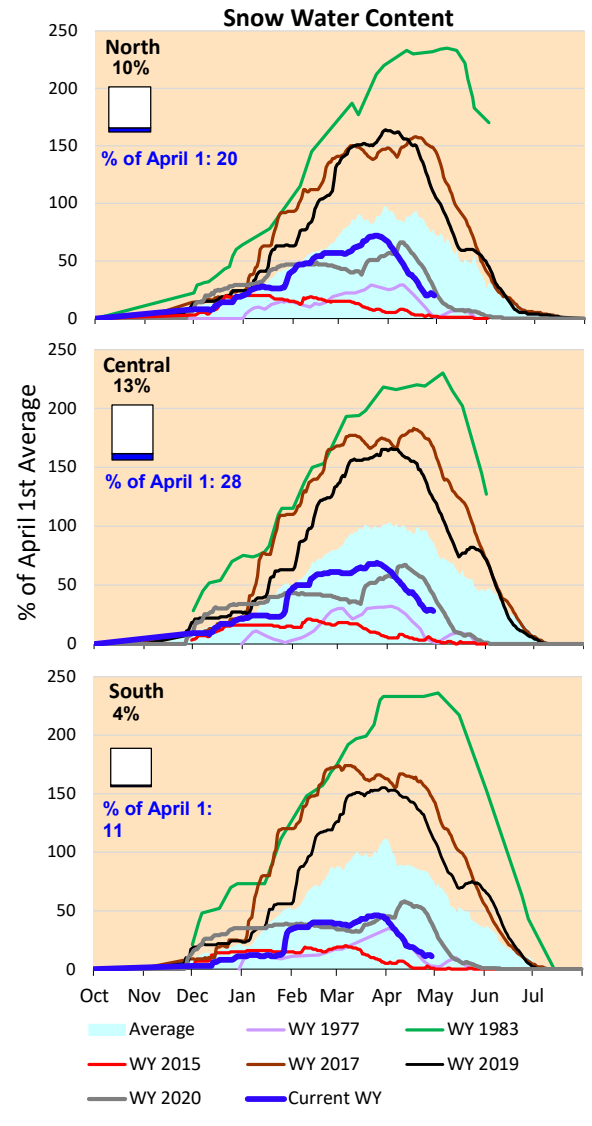
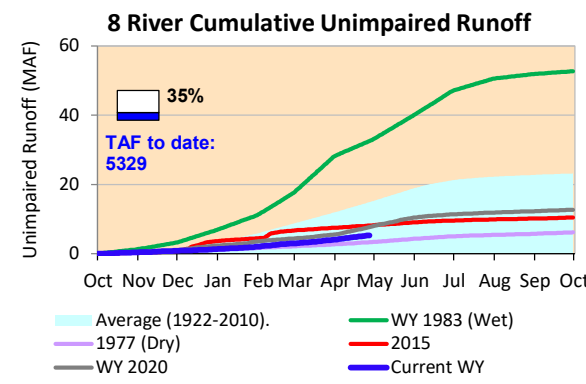
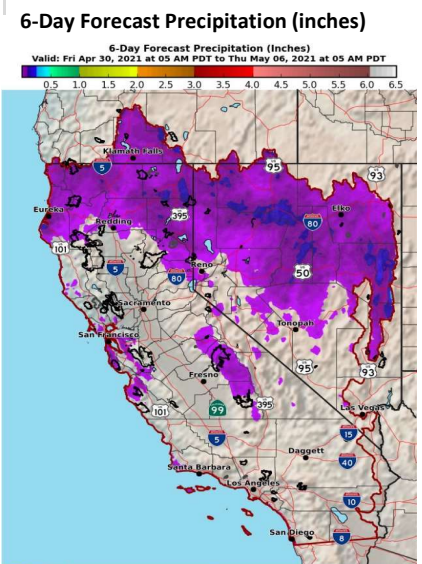


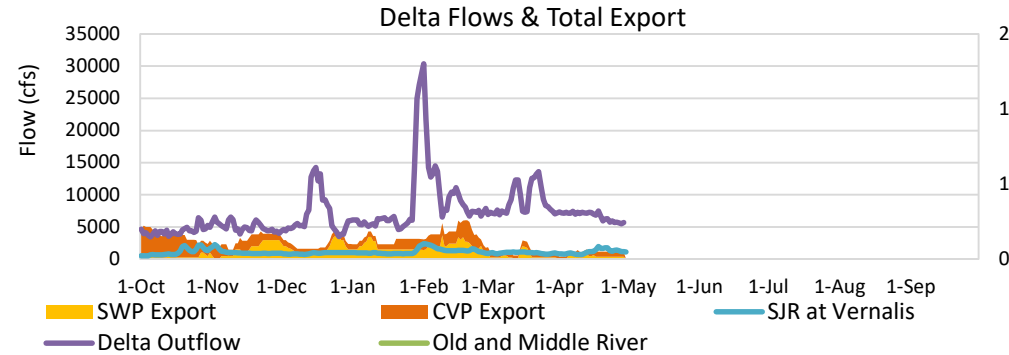
Last week's storm fizzled and no substantial precipitation in the forecast currently. Actual runoff at very low rates with a slight increase in runoff rates from previous weeks. With Sierra snow water content continuing to decline and pretty far along with melt, streamflows will be dropping.

* Note: Percentages in each plot refers to percent of average for this date. When historic data is unavailable, Snow Water Content Bar plot is not shown. The percent of historic average for each SWC location differs slightly from CDEC's report due to small discrepancies in historical data.



Delta outflow conditions are balanced, with X2 and salinity management controlling operations. Delta inflows decreased last week and exports remain at low levels. Storage at Shasta Lake and Folsom Lake is leveling off with increased outflows. Oroville storage leveling off. Oroville storage leveling off.

Note: Yesterday's X-2 Position is estimated.



Daily Average Flow

As reported on 4/29

