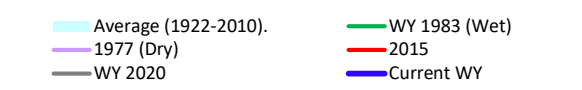
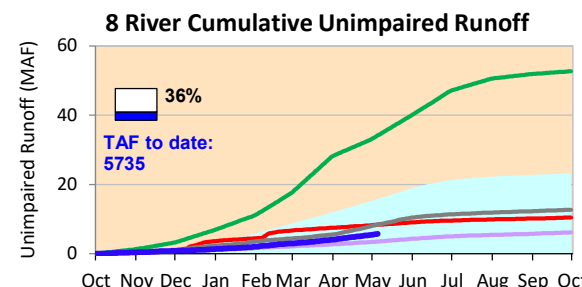
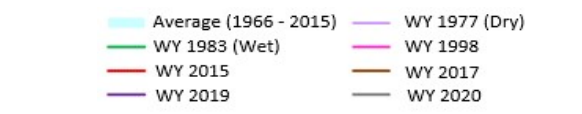


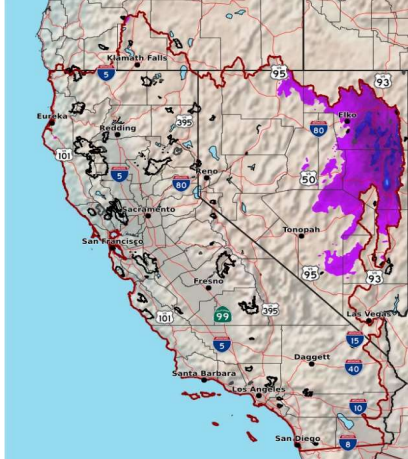
No storm activity last week or projected this week. Actual runoff at very low rates with a slight increase in runoff rates from previous weeks. With Sierra snow water content continuing to decline and pretty far along with melt, streamflows will be dropping.

*Note: Percentages in each plot refers to percent of average for this date. When historic data is unavailable, Snow Water Content Bar plot is not shown. The percent of historic average for each SWC location differs slightly from CDEC's report due to small discrepancies in historical data.

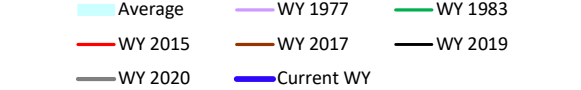
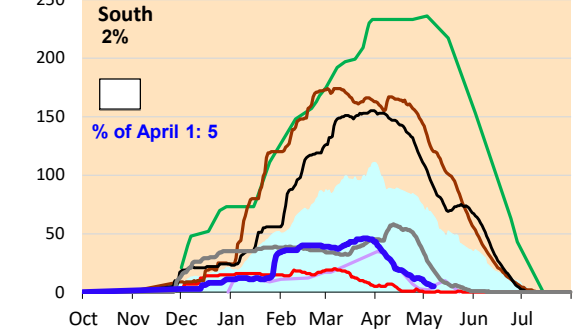
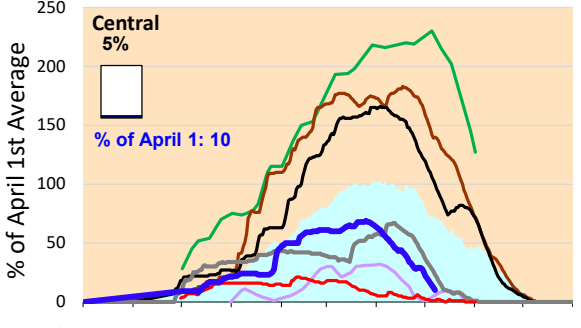
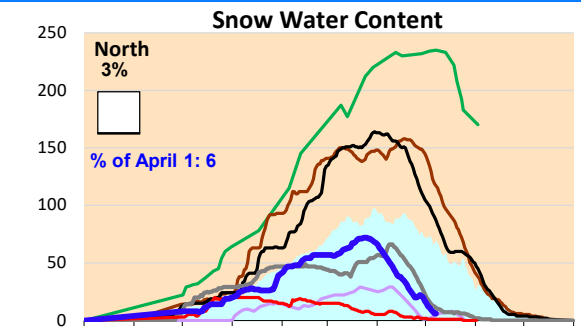


6-Day Forecast Precipitation (inches)

6-Day Forecast Precipitation (Inches)
Valid: Fri May 07, 2021 at 05 AM PDT to Thu May 13, 2021 at 05 AM PDT



National Weather Service
CMRFC - Sacramento, CA
Created: 05/07/2021 06:33 AM PDT
www.cmrfc.noaa.gov





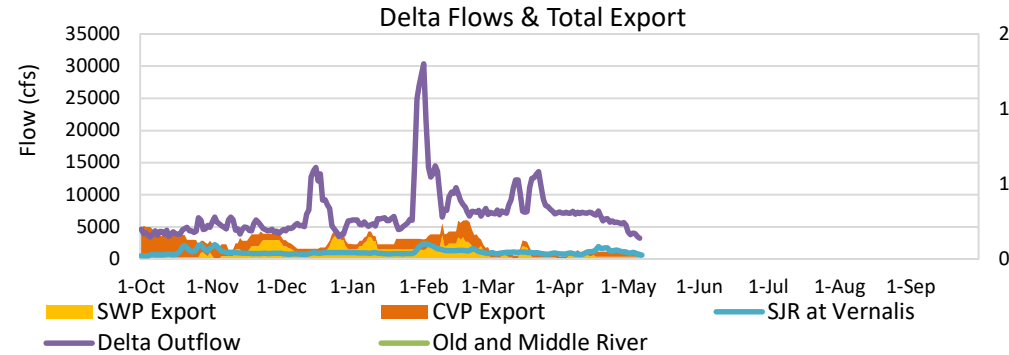
Project Operations



5/7/2021

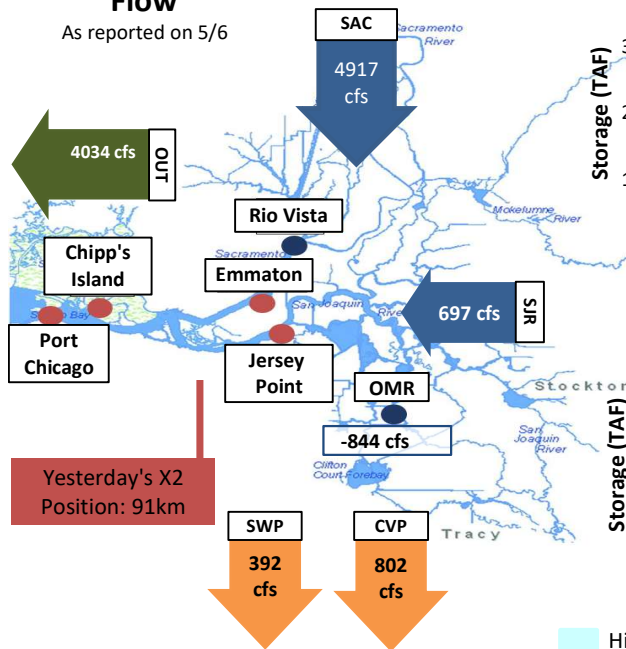
Delta outflow conditions are balanced, with X2 and salinity management controlling operations. Delta inflows continue to decline and exports remain at low levels. Upstream storage at Shasta, Folsom and Oroville reservoirs may have peaked for the season. Reservoir releases are staying low.

Note: Yesterday's X-2 Position is estimated.



Daily Average Flow

As reported on 5/6



Reservoir Storage

