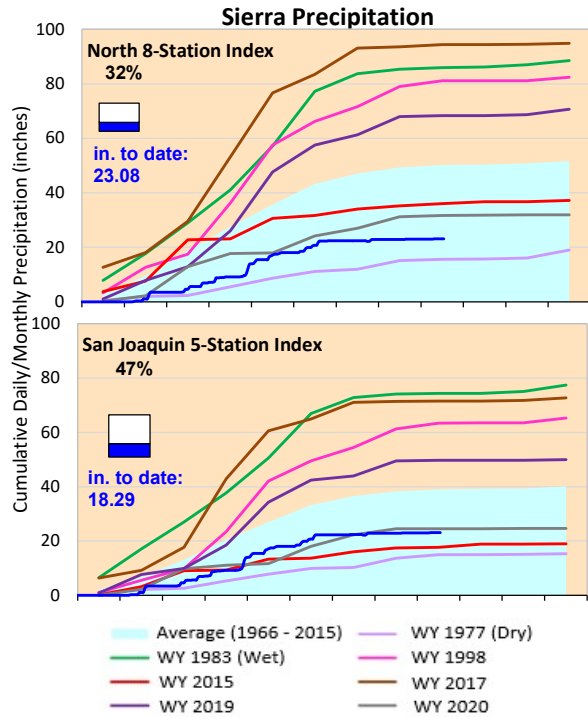




California Statewide Hydroclimate



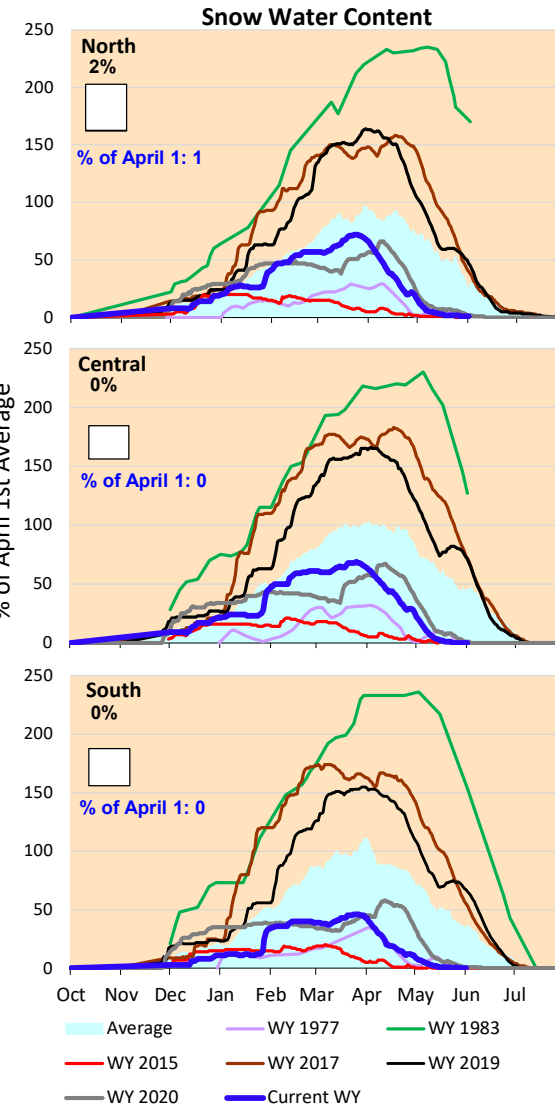
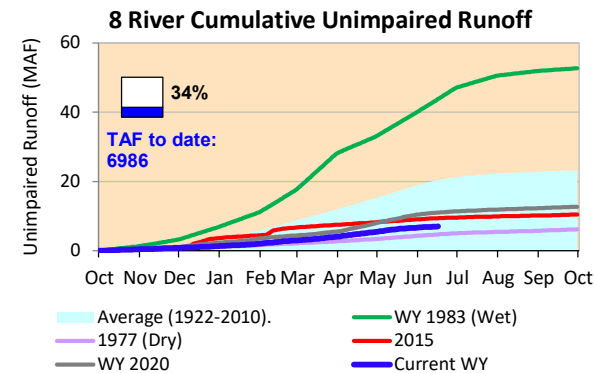
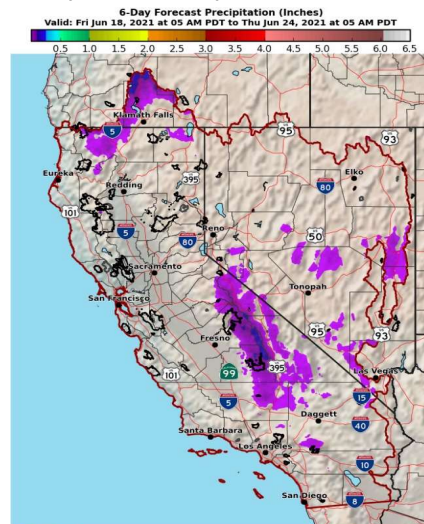
6/18/2021



Storm season is over and no significant precipitation likely through the summer. The snowpack is essentially gone and streamflows are low.

*Note: Percentages in each plot refers to percent of average for this date. When historic data is unavailable, Snow Water Content Bar plot is not shown. The percent of historic average for each SWC location differs slightly from CDEC's report due to small discrepancies in historical data.

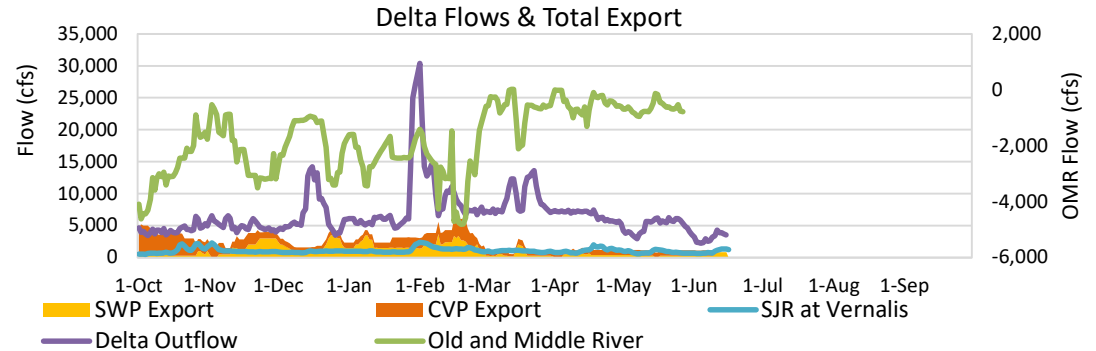
6-Day Forecast Precipitation (inches)



National Weather Service
CMRFC - Sacramento, CA
Created: 06/18/2021 07:32 AM PDT
www.cnrfc.noaa.gov

Delta outflow conditions continue to be balanced with X2 salinity management controlling operations. DWR is installing a flow barrier at False River, which will allow slightly lower outflows that save upstream reservoir storage. Delta inflows remain low, with inflows just what is needed for outflow and in-Delta use. Upstream storage at Shasta, Folsom and Oroville is falling. Reservoir releases remain low.

Note: Yesterday's X-2 Position is estimated.



Daily Average Flow

As reported on 6/15

