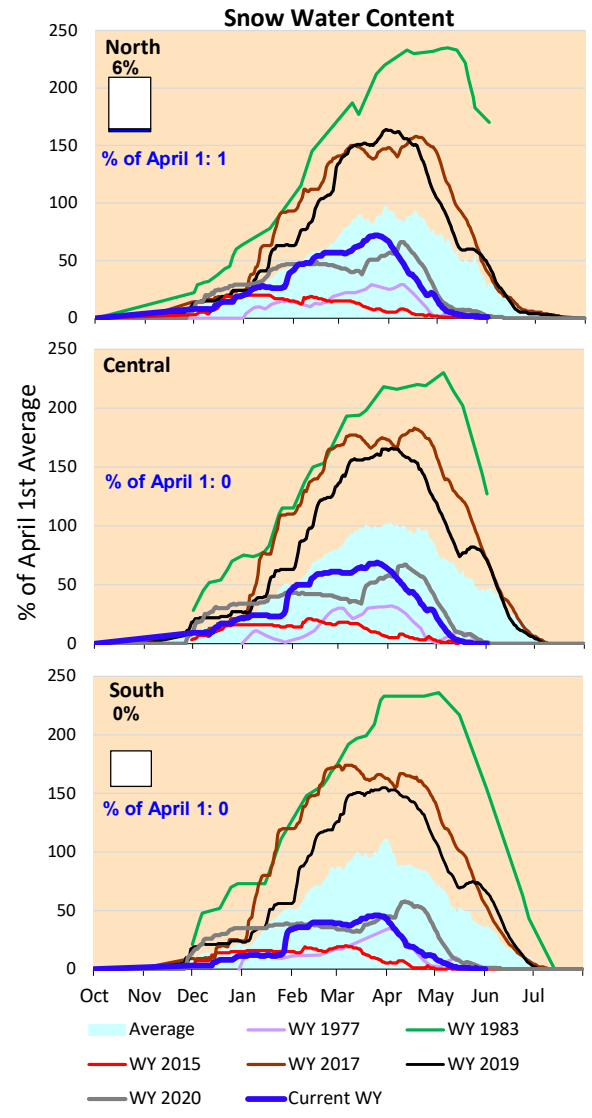
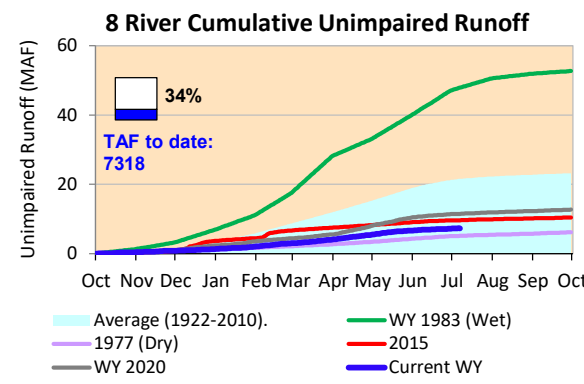
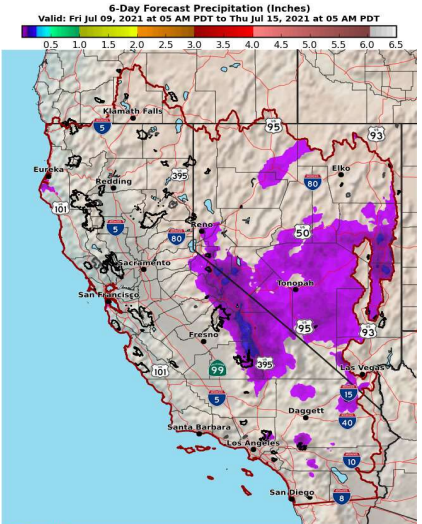


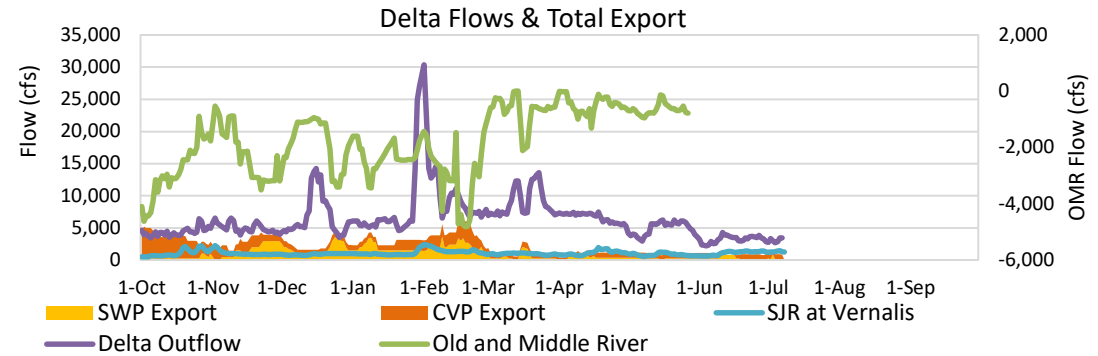
Storm season is over and snowmelt nearly concluded. Streamflows are low and will be tailing off further over the summer.

\*Note: Percentages in each plot refers to percent of average for this date. When historic data is unavailable, Snow Water Content Bar plot is not shown. The percent of historic average for each SWC location differs slightly from CDEC's report due to small discrepancies in historical data.

### 6-Day Forecast Precipitation (inches)

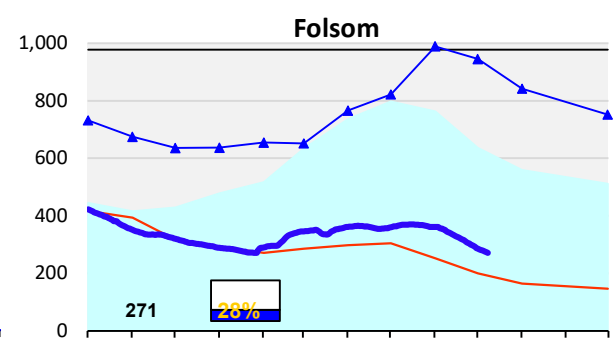
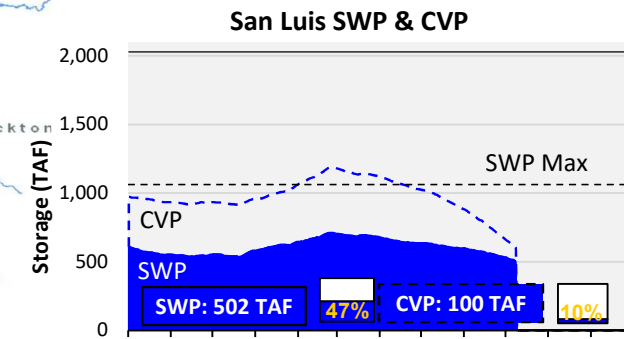
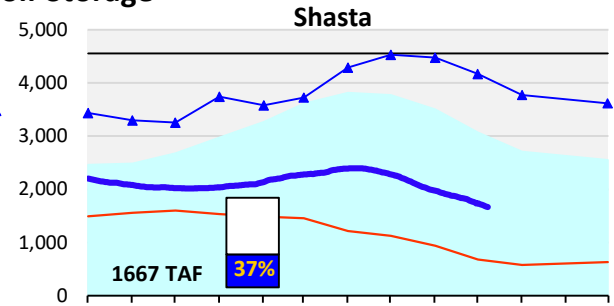
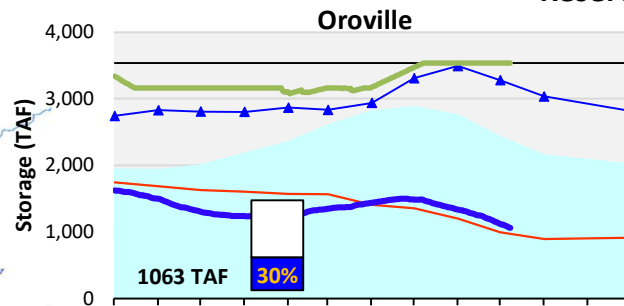
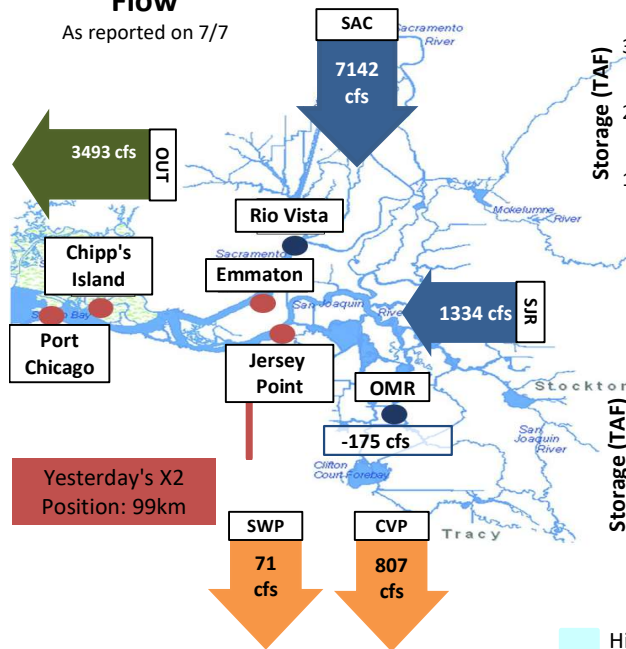


Delta outflow conditions continue to be balanced with salinity management controlling operations. DWR installed the False River flow barrier, which allows slightly lower outflows that save upstream reservoir storage. Delta inflows remain low, with inflows just what is needed for outflow and in-Delta use. Upstream storage at Shasta, Folsom and Oroville is falling. Reservoir releases were increased starting in April and May to meet upstream demands and outflow requirements.



## Daily Average Flow

As reported on 7/7



Oct Nov Dec Jan Feb Mar Apr May Jun Jul Aug Sep

Historical Average Current WY WY 1983 (Wet) WY 1977 (Dry) Capacity Flood Control Storage