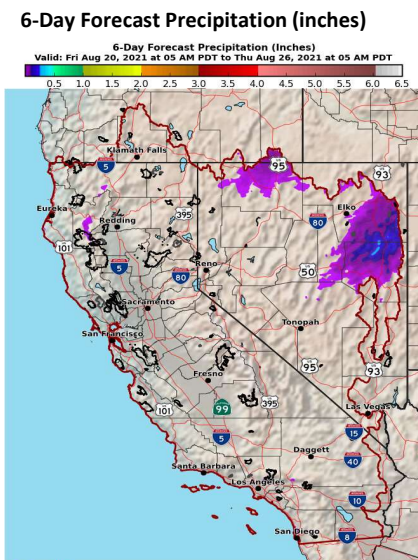
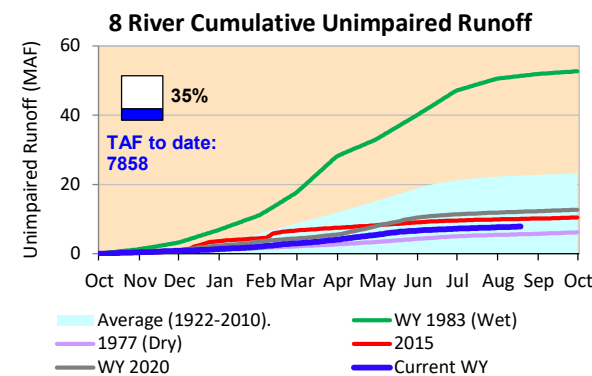
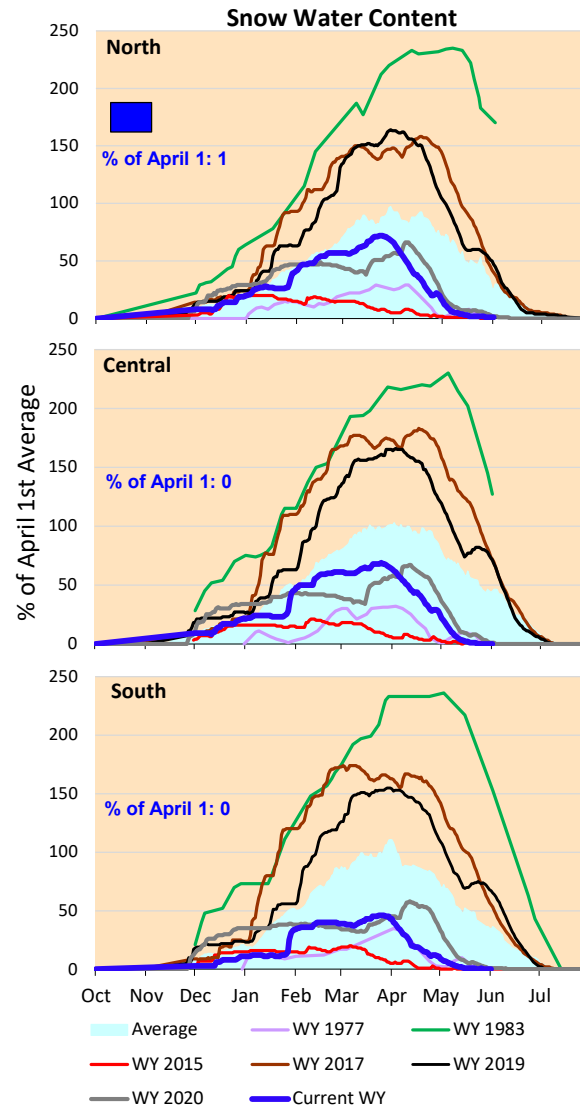


Snowmelt is over and reservoir inflows have flat-lined. Waiting for next year's precipitation now.

*Note: Percentages in each plot refers to percent of average for this date. When historic data is unavailable, Snow Water Content Bar plot is not shown. The percent of historic average for each SWC location differs slightly from CDEC's report due to small discrepancies in historical data.



National Weather Service
 CNRFC - Sacramento, CA
 Created: 08/20/2021 06:18 AM PDT
 Follow Us: [Social Media Icons]
 www.cnrfc.noaa.gov





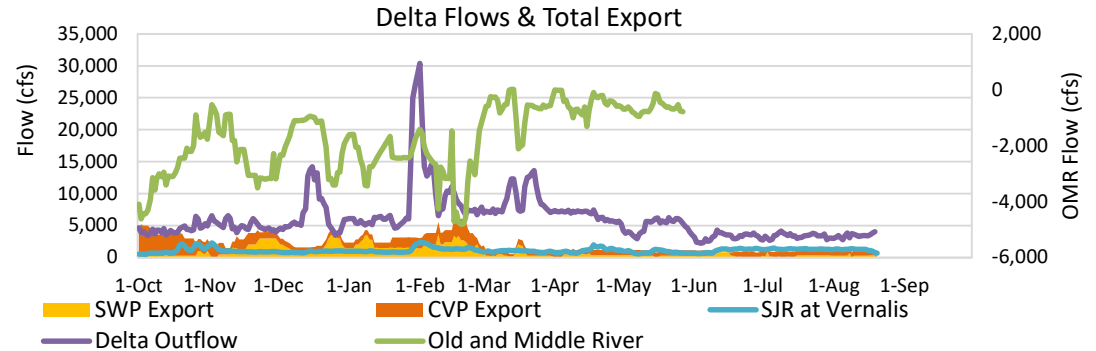
Project Operations



8/20/2021

Delta outflow conditions continue to be balanced with salinity management controlling operations. Installation of the False River flow barrier allows slightly lower outflows that save upstream reservoir storage. Delta inflows remain low, with inflows as needed for outflow and in-Delta use. Upstream storage at Shasta, Folsom and Oroville is falling, with Oroville falling below its 1977 historical low storage level. Reservoir releases have been at rates just high enough to meet upstream demands and outflow requirements.

Note: Yesterday's X-2 Position is estimated.



Daily Average Flow

As reported on 8/19

