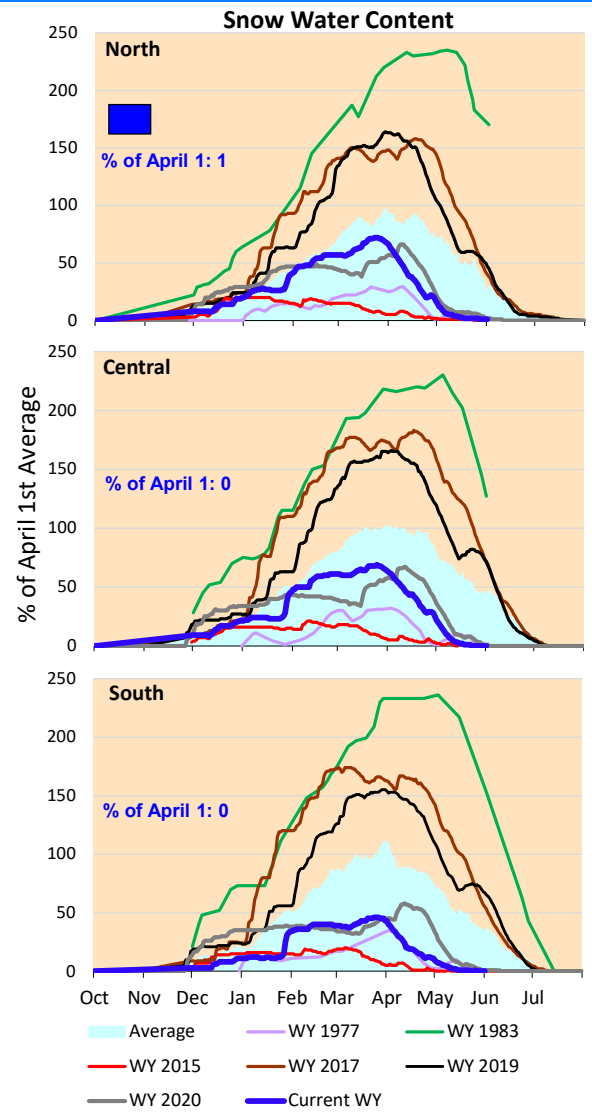
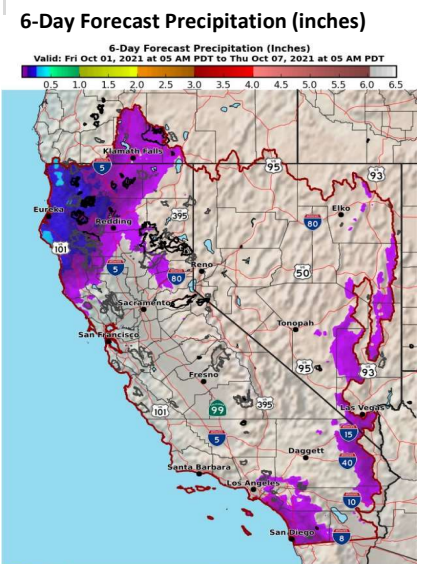
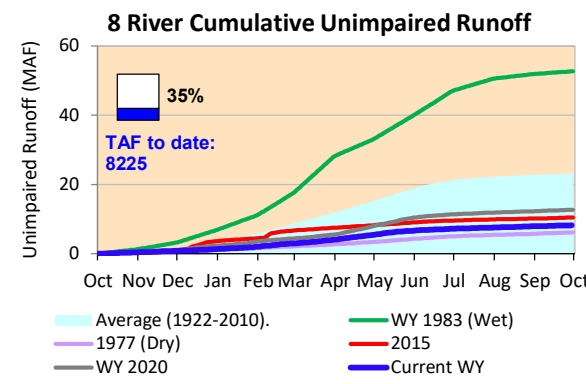


Snowmelt runoff is finished and reservoir inflows are bottomed out. We're starting the new water year, but fall precipitation is normally iffy and there is nothing significant in the latest 6-day forecast. The watersheds are going to be very dry starting the year and will likely need some pretty big rains to get primed and provide runoff.

*Note: Percentages in each plot refers to percent of average for this date. When historic data is unavailable, Snow Water Content Bar plot is not shown. The percent of historic average for each SWC location differs slightly from CDEC's report due to small discrepancies in historical data.



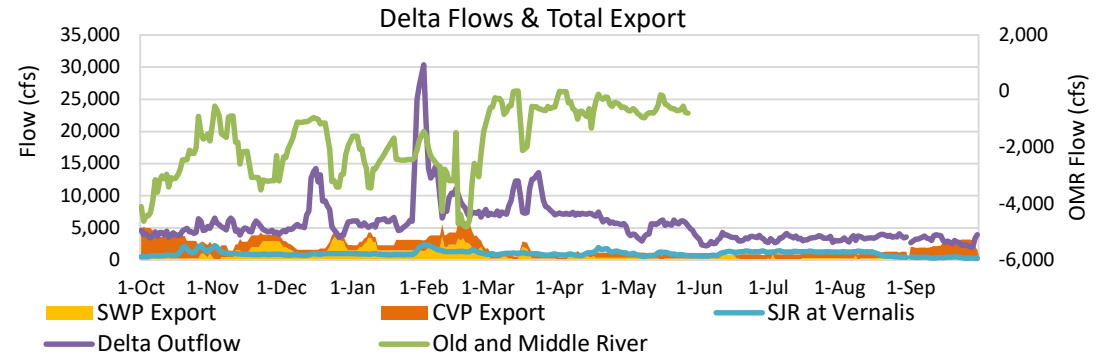


Project Operations



10/1/2021

Delta outflow conditions continue to be balanced with salinity management controlling operations. Installation of the False River flow barrier allows slightly lower outflows that save upstream reservoir storage. Delta inflows remain low, with inflows as needed for outflow, in-Delta use and exports. Upstream storage at Shasta, Folsom and Oroville is falling, with Oroville falling below its 1977 historical low storage level. Reservoir releases have been at rates just high enough to meet upstream demands and outflow requirements.



Daily Average Flow

As reported on 9/28

