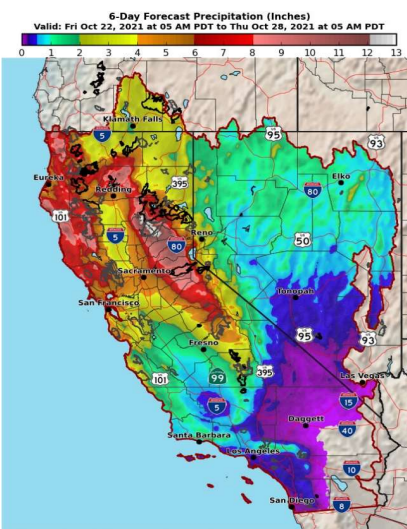


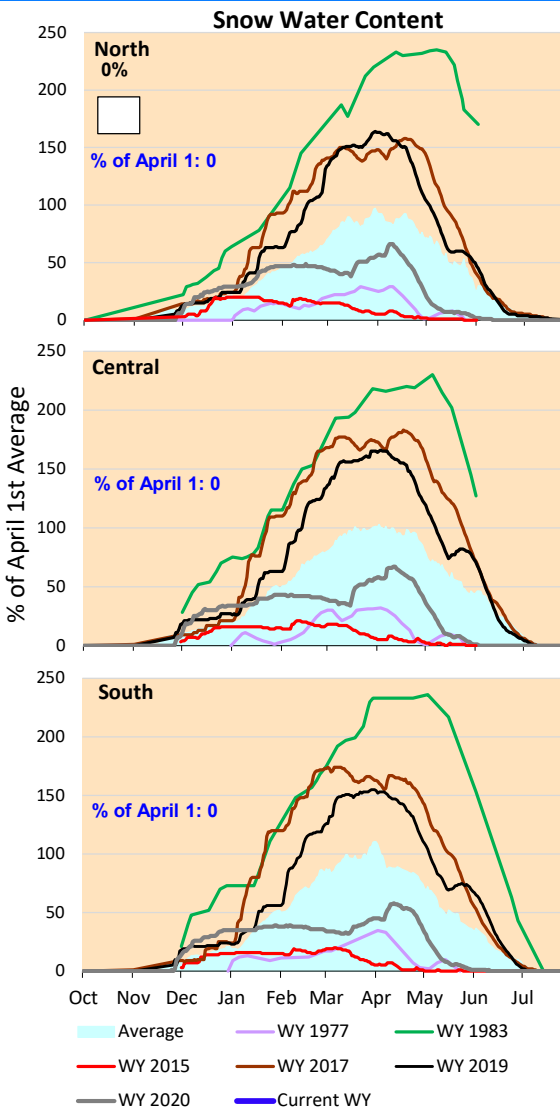
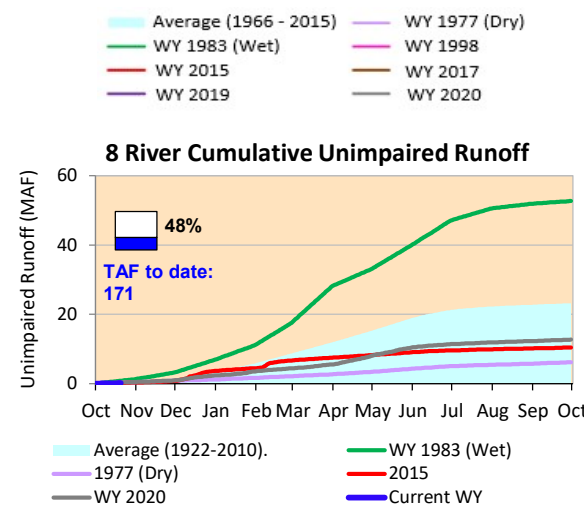
A few atmospheric rivers (AR) are expected to make landfall in the 6-day forecast, estimating over 9 inches in the North and lesser amounts in the South and Central portions of the state. Combined totals from these storm events may be enough for significant streamflow increases, especially in the North.

\*Note: Percentages in each plot refers to percent of average for this date. When historic data is unavailable, Snow Water Content Bar plot is not shown. The percent of historic average for each SWC location differs slightly from CDEC's report due to small discrepancies in historical data.

### 6-Day Forecast Precipitation (inches)



National Weather Service  
CNRFC - Sacramento, CA  
Created: 10/22/2021 06:51 AM PDT  
www.cnrfc.noaa.gov



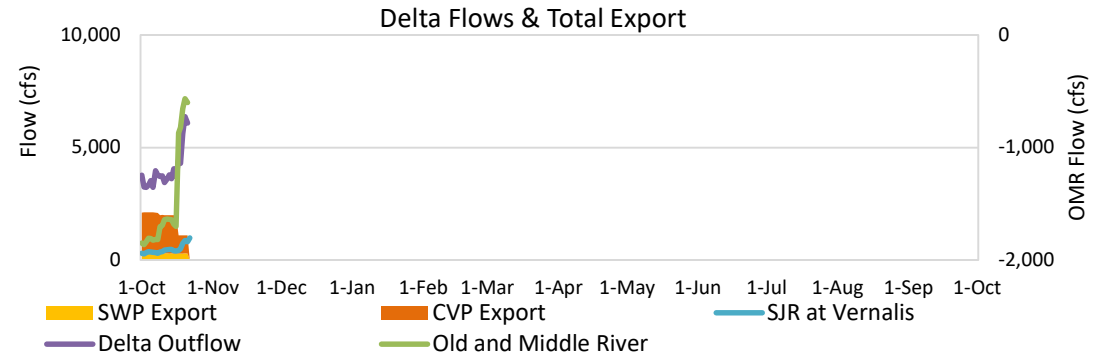


# Project Operations



10/22/2021

Delta outflow conditions continue to be balanced with salinity management controlling operations. Installation of the False River flow barrier allows slightly lower outflows that save upstream reservoir storage. Delta inflows increased from previous week but remain low, with inflows as needed for outflow, in-Delta use and exports. Upstream storage at Shasta, Folsom and Oroville is falling, with Oroville falling below its 1977 historical low storage level. Reservoir releases have been at rates just high enough to meet upstream demands and outflow requirements. Note: Yesterday's X-2 Position is estimated.



## Daily Average Flow

As reported on 10/21

