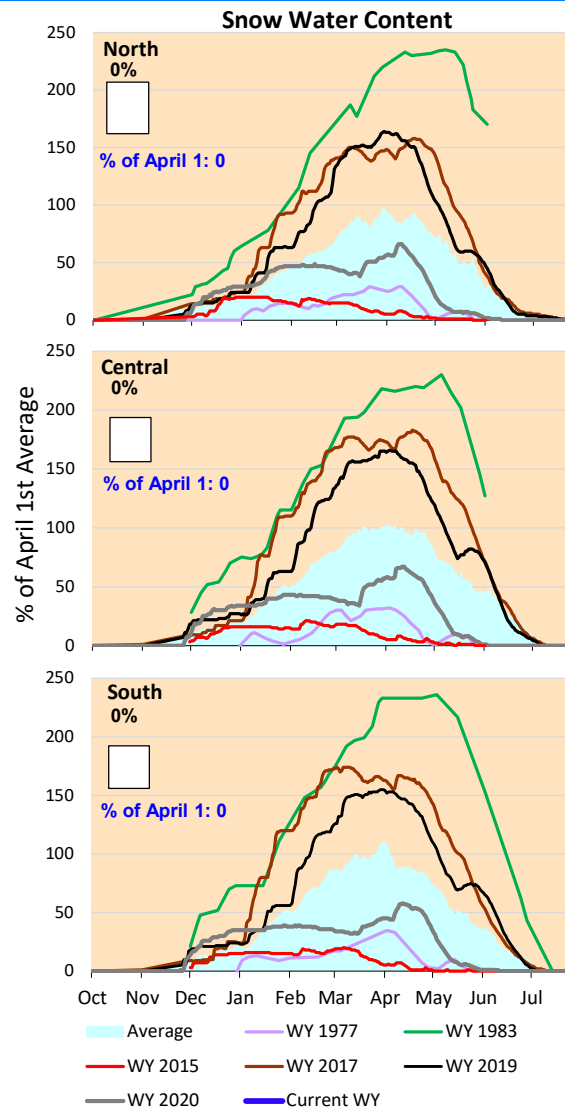
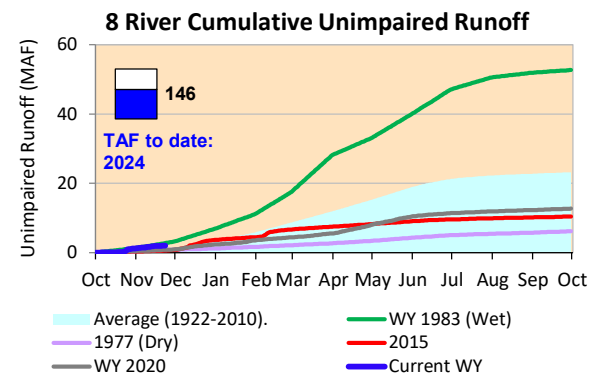
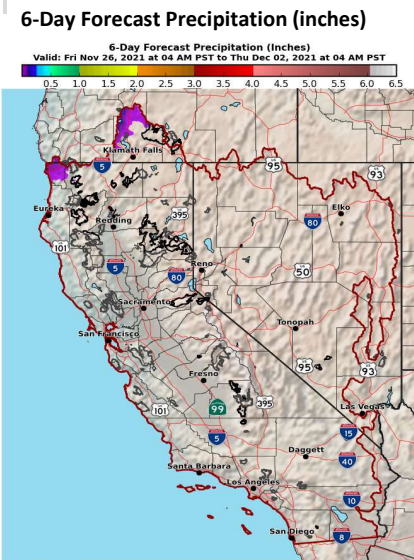


Dry conditions continue with no significant snowpack yet. Cumulative precipitation so far this water year is above normal for this time of year. Forecasts call for dry conditions through November and into early December.

*Note: Percentages in each plot refers to percent of average for this date. When historic data is unavailable, Snow Water Content Bar plot is not shown. The percent of historic average for each SWC location differs slightly from CDEC's report due to small discrepancies in historical data.





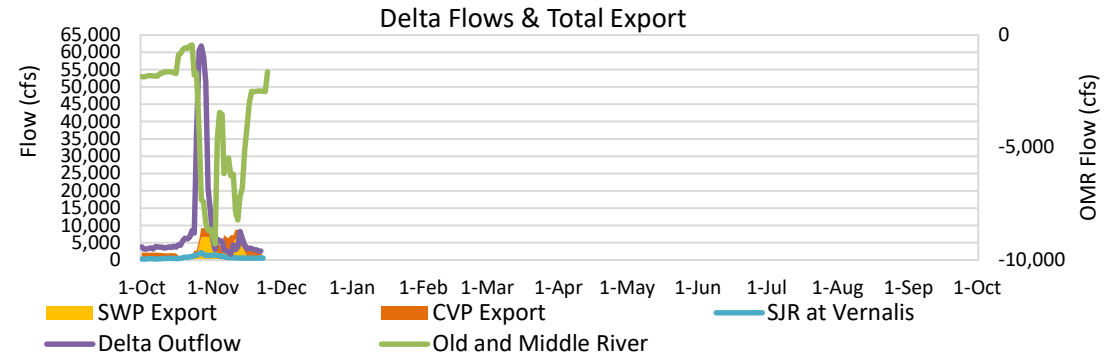
Project Operations



11/26/2021

Delta outflow conditions continue to be balanced with salinity management controlling operations. Delta inflow and Delta outflow have remained at low levels last week. Minor increases in storage at Shasta and Oroville, but they are still running below average and below other historic dry year levels for this time of year. The storage at Folsom, while still low, is higher than the historic dry year level.

Note: Yesterday's X-2 Position is estimated.



Daily Average Flow

