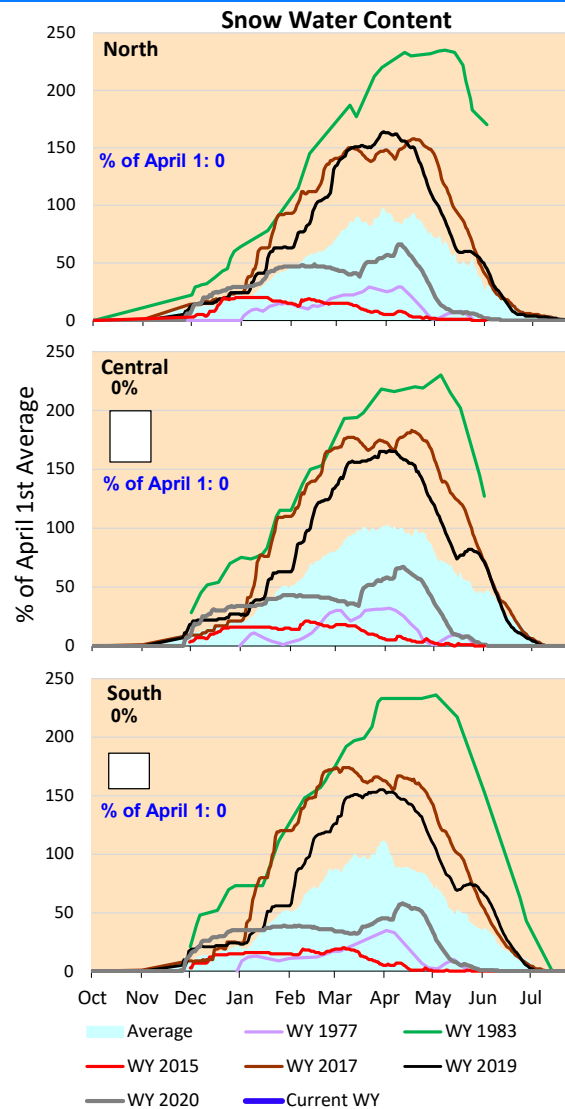
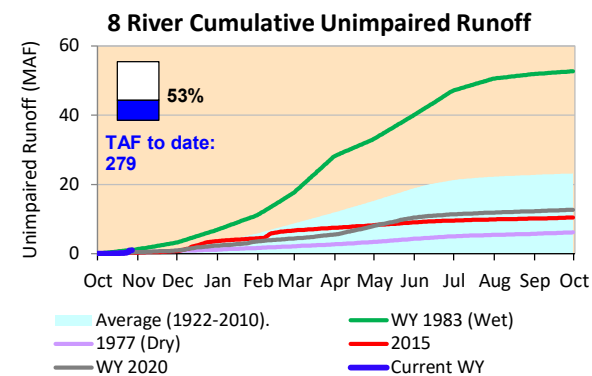
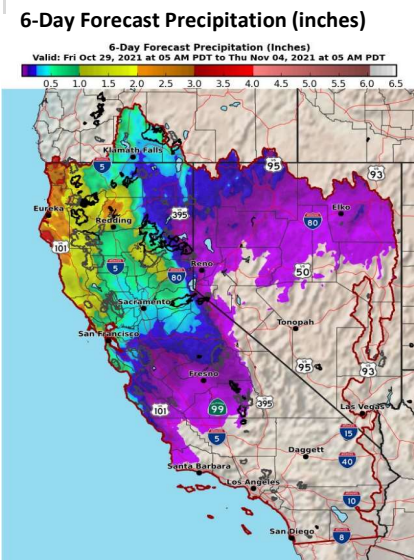


Light precipitation forecast for last weekend with higher amounts focused along the north coast and inland to Shasta Lake. Additional rainfall expected early this week across northern CA.

*Note: Percentages in each plot refers to percent of average for this date. When historic data is unavailable, Snow Water Content Bar plot is not shown. The percent of historic average for each SWC location differs slightly from CDEC's report due to small discrepancies in historical data.





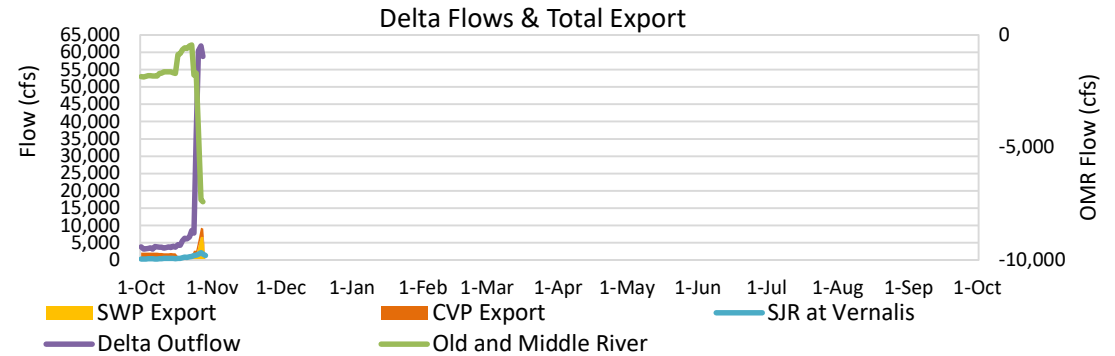
Project Operations



10/29/2021

Delta inflows increased significantly from the recent precipitation event and SWP exports bumped up last week. Upstream storage at Oroville rose a couple hundred acre-feet with lesser increases at Folsom. Even with the increased storage at Oroville, it is still more than a half-million acre-feet below this time last year.

Note: Yesterday's X-2 Position is estimated.



Daily Average Flow

As reported on 10/28

