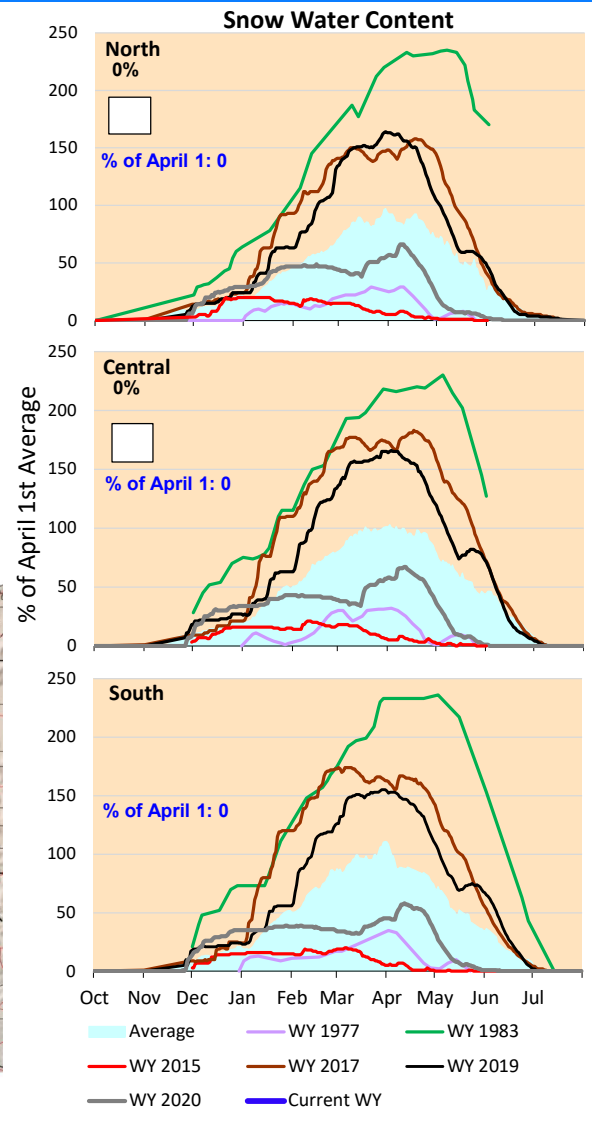
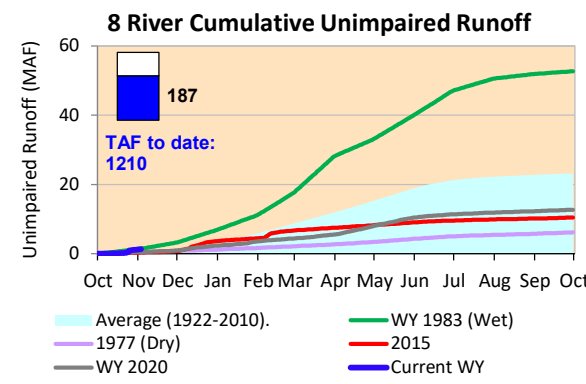
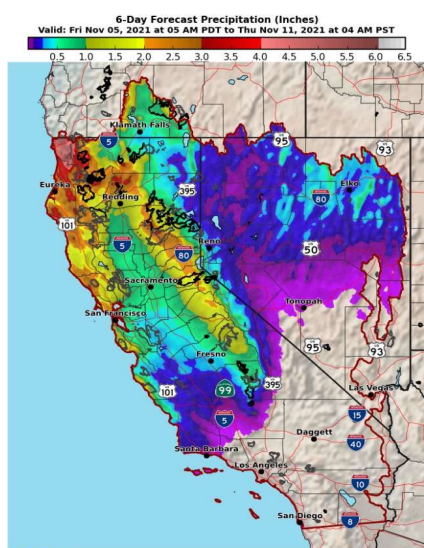


Light precipitation expected this weekend with higher amounts focused along the north coast and inland to Shasta Lake. Additional rainfall expected early next week across northern and central CA.

\*Note: Percentages in each plot refers to percent of average for this date. When historic data is unavailable, Snow Water Content Bar plot is not shown. The percent of historic average for each SWC location differs slightly from CDEC's report due to small discrepancies in historical data.

### 6-Day Forecast Precipitation (inches)





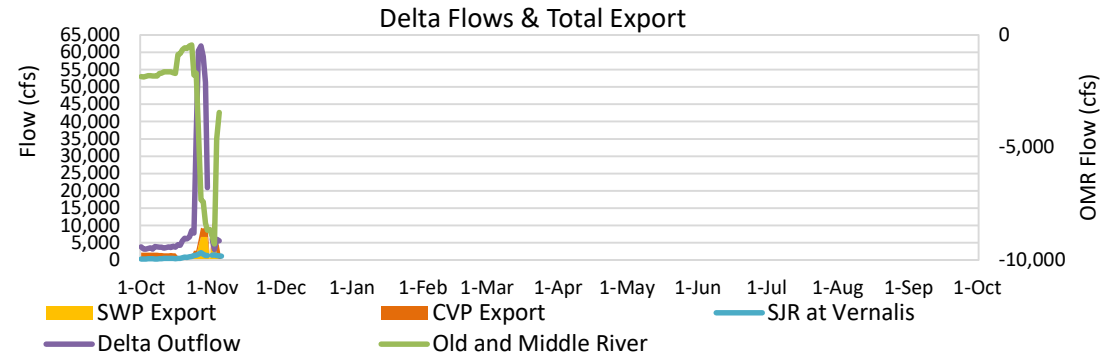
# Project Operations



11/5/2021

Delta outflow conditions back to balanced conditions (nor surplus) with salinity management controlling operations. Delta inflows decreased from last week after the precipitation event and SWP exports have also decreased. Even with the increased storage at Folsom and Oroville, it is still running below average and other historic dry year levels for this time of year.

Note: Yesterday's X-2 Position is estimated.



## Daily Average Flow

As reported on 11/3

