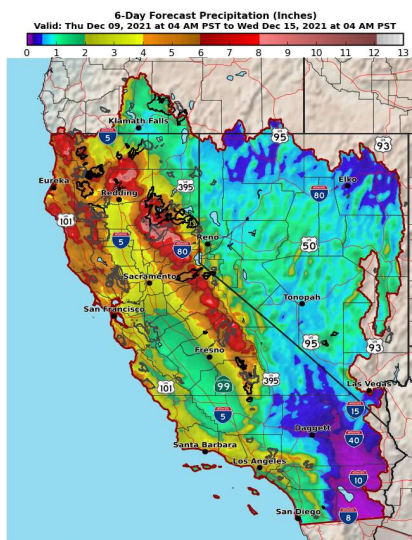


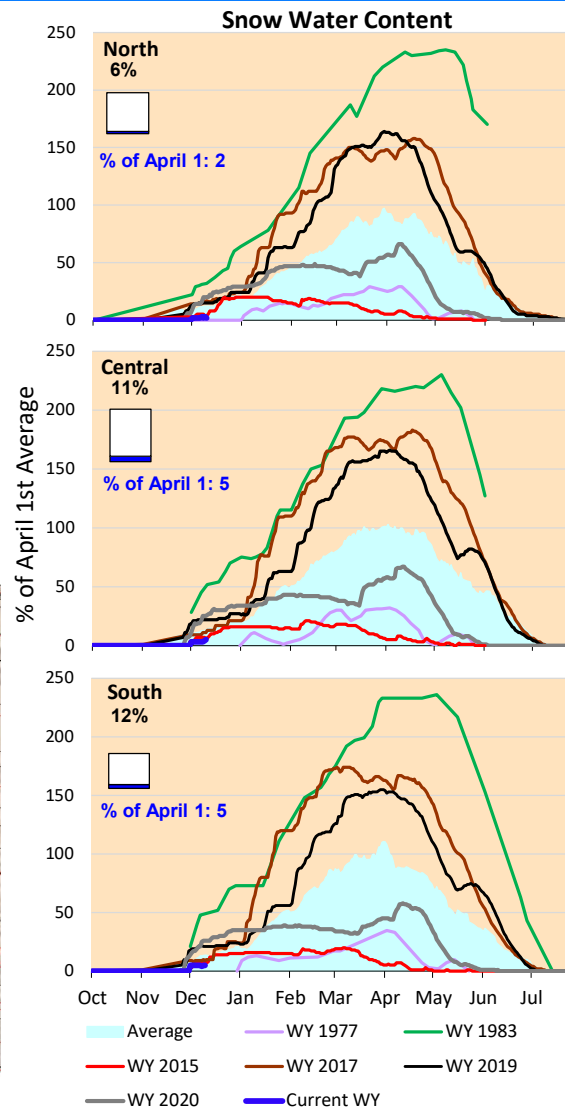
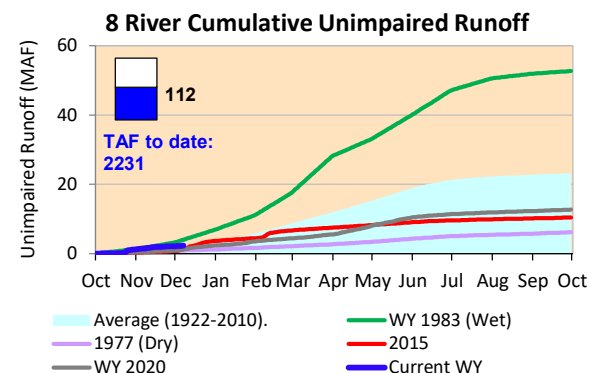
Three storms are forecasted this week. Cumulative precipitation so far this water year is above normal for this time of year. High precipitation forecast for central region and inland to Shasta Lake through December 15. Feather River watershed projected to have 9.5 inches of rain through December 20

*Note: Percentages in each plot refers to percent of average for this date. When historic data is unavailable, Snow Water Content Bar plot is not shown. The percent of historic average for each SWC location differs slightly from CDEC's report due to small discrepancies in historical data.

6-Day Forecast Precipitation (inches)



National Weather Service
CNRFC - Sacramento, CA
Created: 12/09/2021 12:50 PM PST
www.cnrnc.noaa.gov



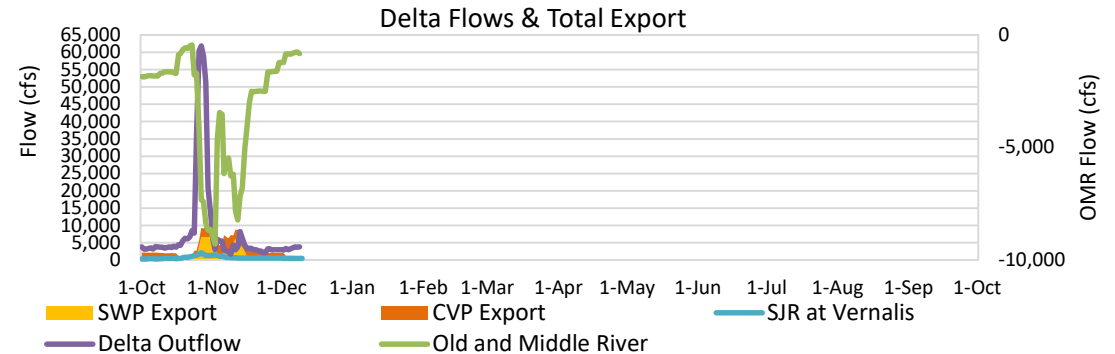


Project Operations



12/10/2021

Delta outflow conditions continue to be balanced with salinity management controlling operations. With consistent Delta inflows, the outflow has increased and considerable reduction in CVP exports from last week. Minor increase in storage at Shasta and Oroville, but they are still running below average and historic dry year (1977) levels for this time of year. Not much change in San Luis storage last week. Note: Yesterday's X-2 Position is estimated.



Daily Average Flow

As reported on 12/9

