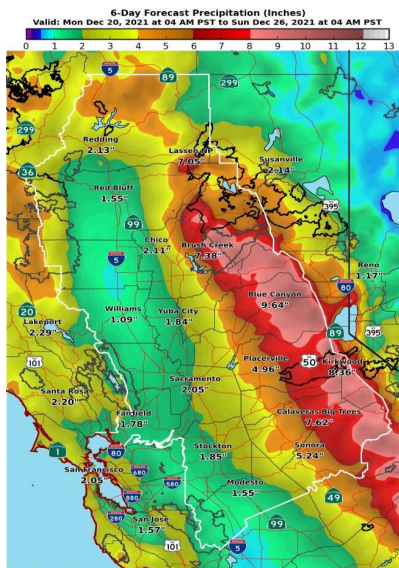


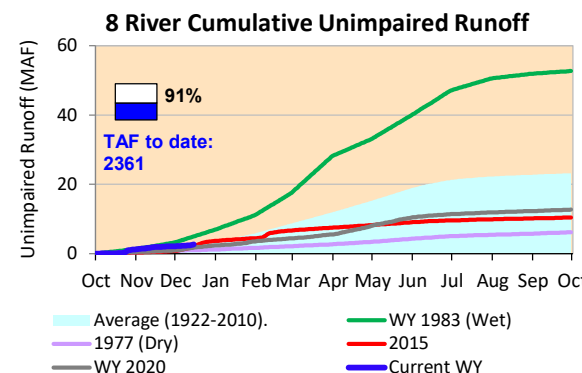
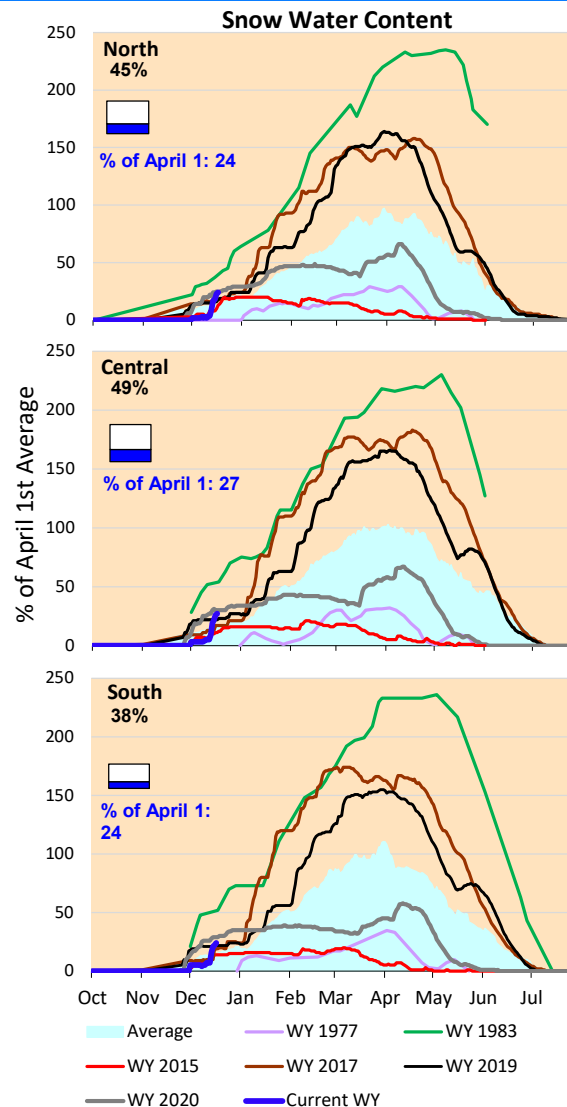
Some storm forecasted this week. Cumulative precipitation so far this water year is above normal for this time of year. Some good looking precipitation forecast for central region and inland to Shasta Lake through December 26.

\*Note: Percentages in each plot refers to percent of average for this date. When historic data is unavailable, Snow Water Content Bar plot is not shown. The percent of historic average for each SWC location differs slightly from CDEC's report due to small discrepancies in historical data.

### 6-Day Forecast Precipitation (inches)



National Weather Service  
CNRFC - Sacramento, CA  
Created: 12/20/2021 07:40 AM PST  
www.cnrfc.noaa.gov





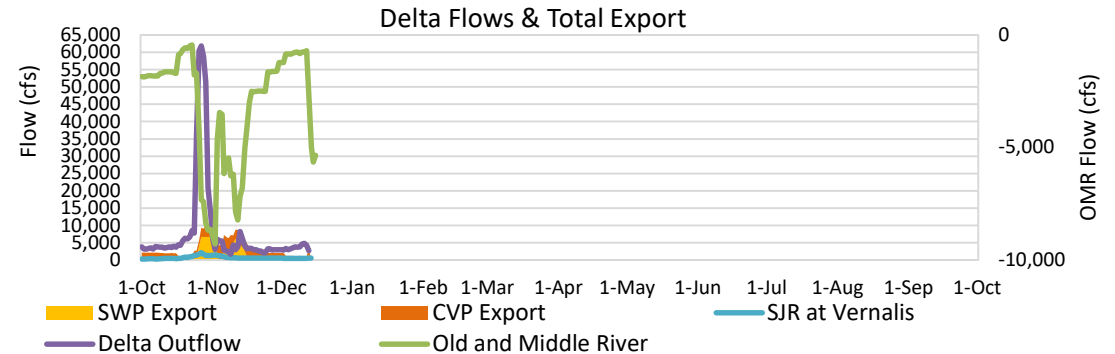
# Project Operations



12/17/2021

Delta outflow conditions changed to excess with restrictions with salinity management controlling operations. With consistent Delta inflows, the outflow has marginally decreased and considerable increase in CVP and SWP exports from last week. Last week's storm increased the storage of the reservoirs but Shasta and Oroville is still running below average and other historic dry year levels for this time of year. The storage at Folsom is higher than the historic dry year level.

Note: Yesterday's X-2 Position is estimated.



## Daily Average Flow

As reported on 12/13

