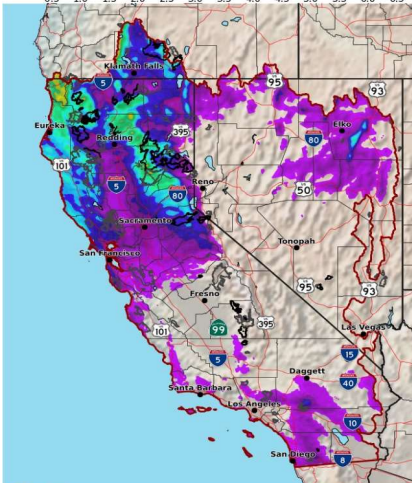
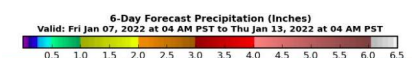


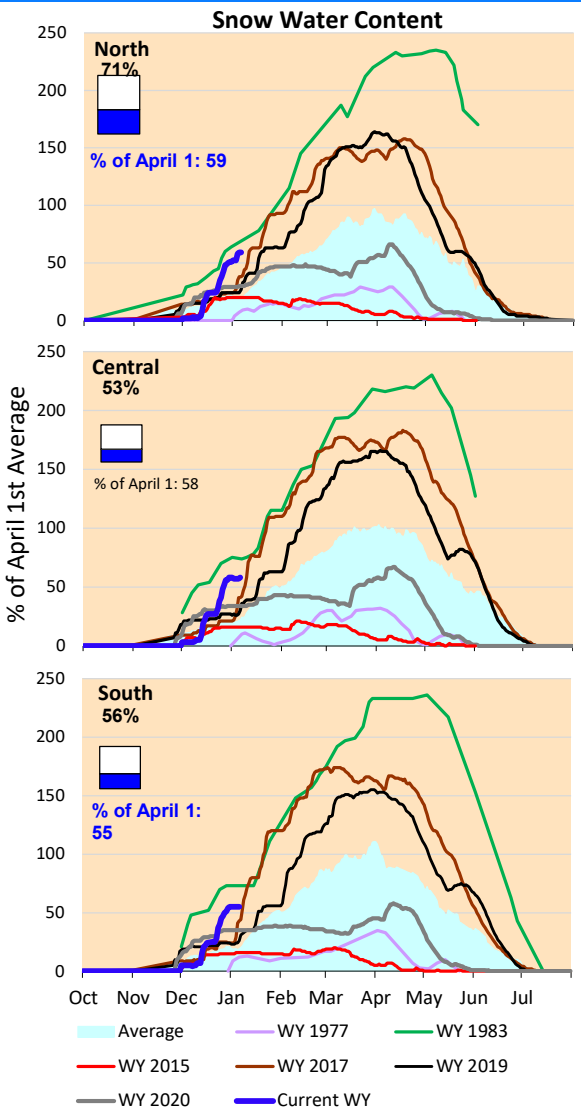
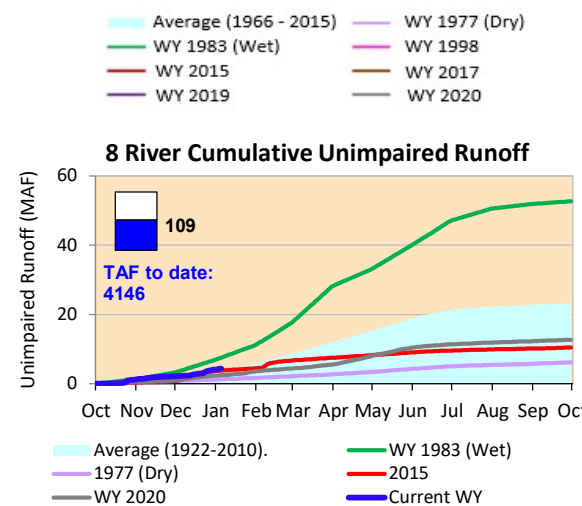
Light precipitation forecast over Northern California coastal region and inland to Shasta Lake for weekend and mid January. Cumulative precipitation and snow water content are substantially above normal for this time of year.

*Note: Percentages in each plot refers to percent of average for this date. When historic data is unavailable, Snow Water Content Bar plot is not shown. The percent of historic average for each SWC location differs slightly from CDEC's report due to small discrepancies in historical data.

6-Day Forecast Precipitation (inches)



National Weather Service
CNRFC - Sacramento, CA
Created: 01/07/2022 07:03 AM PST
www.cnrfc.noaa.gov





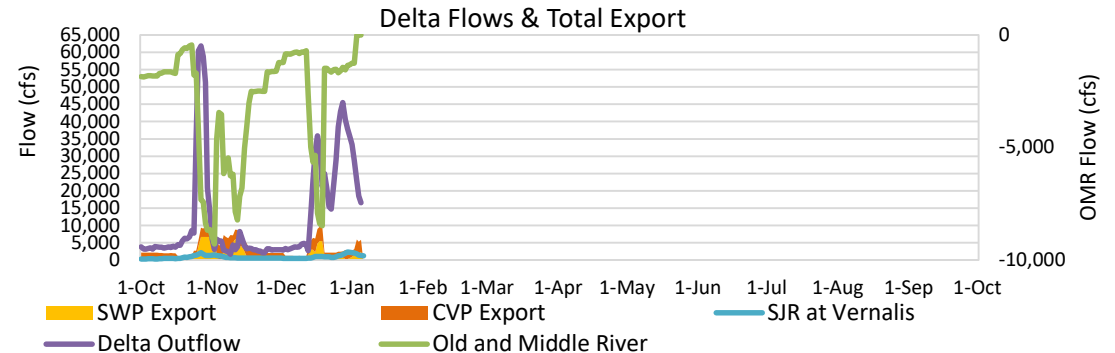
Project Operations



1/7/2022

Delta outflow conditions continue to be 'excess with restrictions' with Old and Middle River flows restricting exports. Considerable reduction in Delta inflows and outflow and some increase in SWP-CVP export as compared to last week. Recent storms increased the storage of the reservoirs but Shasta and Oroville are still running below average and other historic dry year levels for this time of year. The storage at Folsom is higher than the historic average level and now at flood reservation space with higher releases.

Note: Yesterday's X-2 Position is estimated.



Daily Average Flow

