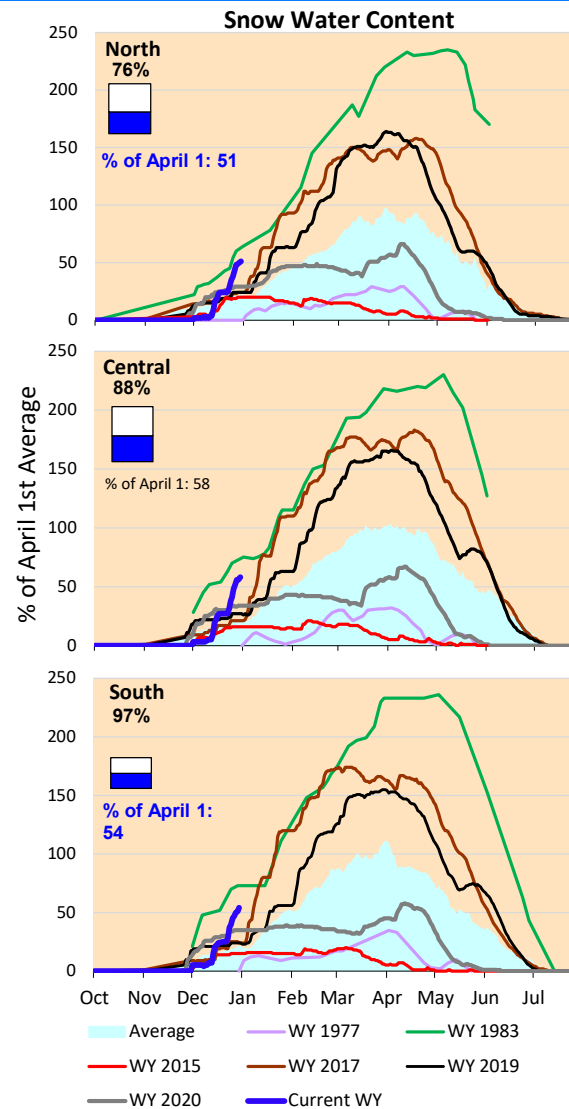
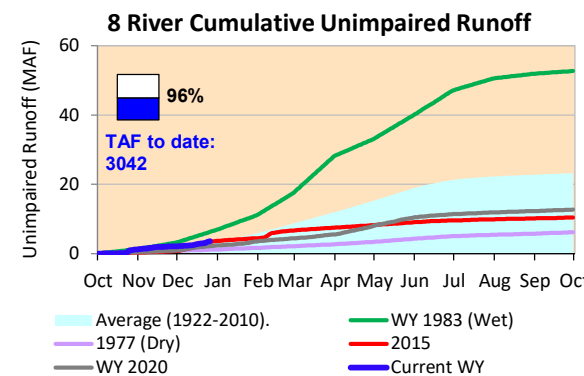
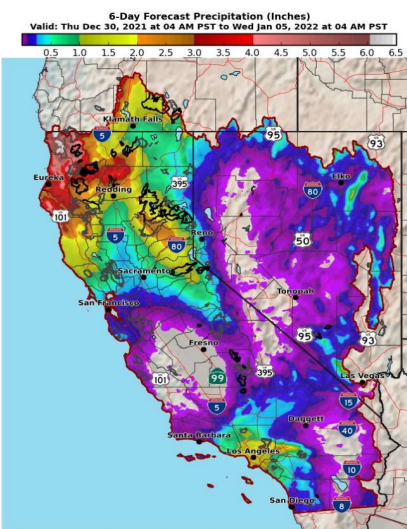


Some storms forecasted this week. Cumulative precipitation and snow water content are above normal for this time of year. Forecast of some precipitation for LA region this weekend and Northern California coastal region and inland to Shasta Lake through the middle of next week.

\*Note: Percentages in each plot refers to percent of average for this date. When historic data is unavailable, Snow Water Content Bar plot is not shown. The percent of historic average for each SWC location differs slightly from CDEC's report due to small discrepancies in historical data.

### 6-Day Forecast Precipitation (inches)





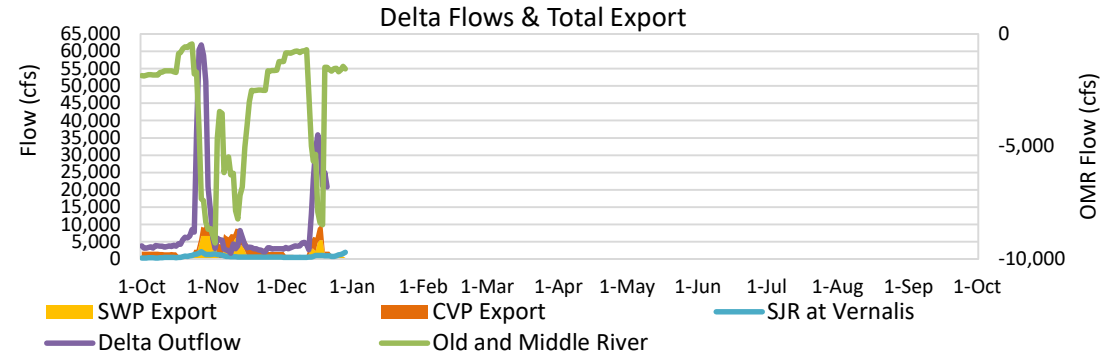
# Project Operations



12/30/2021

Delta outflow conditions continue to be 'excess with restrictions' with Old and Middle River flows restricting exports. SWP exports dropped significantly with OMR limites controlling. Recent storms doubled the Delta inflows and outflow as compared to last week. The storms over Christmas increased reservoir storage but Shasta and Oroville are still running below average and other historic dry year levels for this time of year. The storage at Folsom is higher than the historic average level and is now at Flood reservation space with higher releases.

Note: Yesterday's X-2 Position is estimated.



## Daily Average Flow

As reported on 12/29

