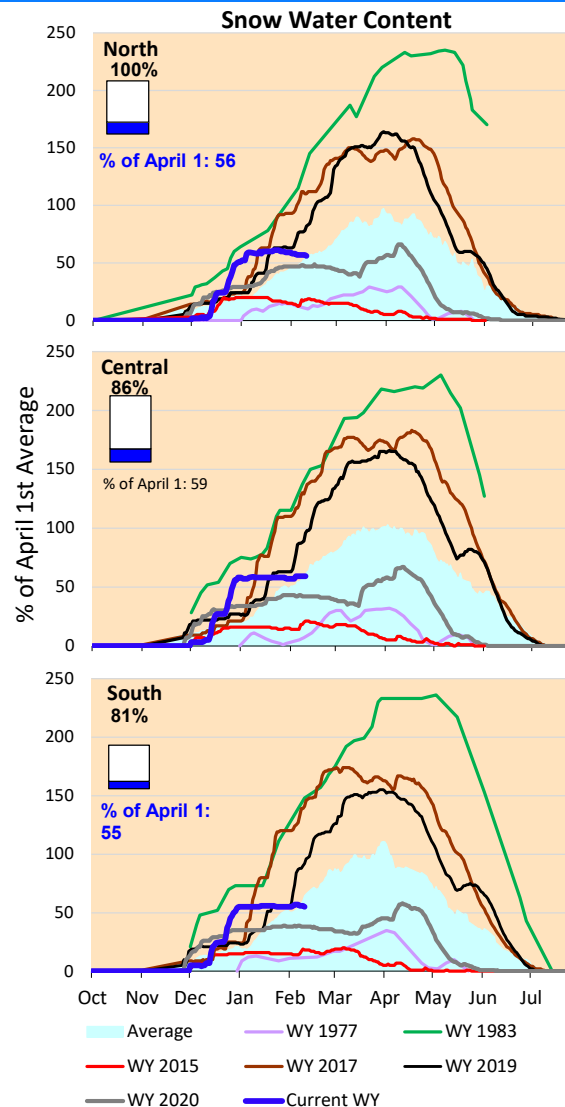
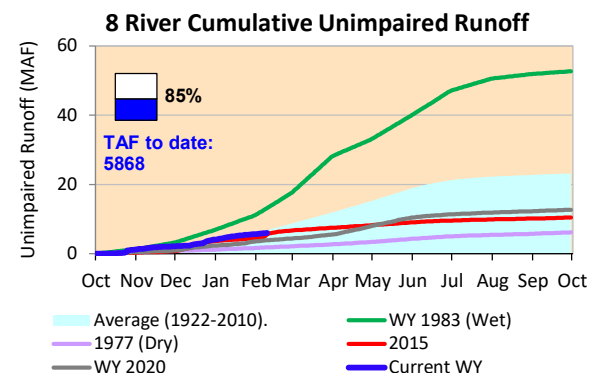
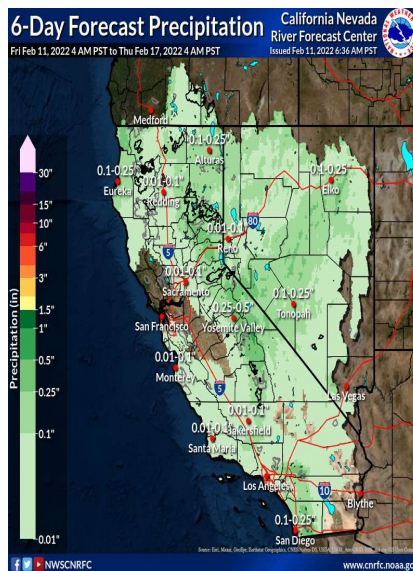


Minimal precipitation is projected for California through next week. The cumulative precipitation remains steady and snow water content decreased in the North region, but are similar to average values for this time of year. Actual runoff continuing at historical average rates.

*Note: Percentages in each plot refers to percent of average for this date. When historic data is unavailable, Snow Water Content Bar plot is not shown. The percent of historic average for each SWC location differs slightly from CDEC's report due to small discrepancies in historical data.

6-Day Forecast Precipitation (inches)





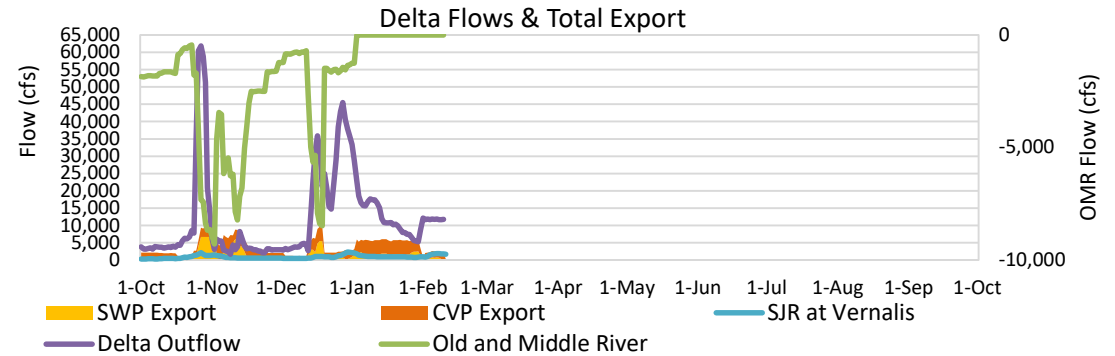
Project Operations



2/11/2022

Delta outflow conditions continue to remain 'balanced' with X2 salinity requirements for February controlling operations. Delta inflows, outflow, and exports are similar to last week with only minor changes in SJR and SAC inflow. Shasta and Oroville storage has leveled off and still running below average level for this time of year. The storage at Folsom is analogous to the historic average level and now at flood reservation space with higher releases.

Note: Yesterday's X-2 Position is estimated.



Daily Average Flow

As reported on 2/10

