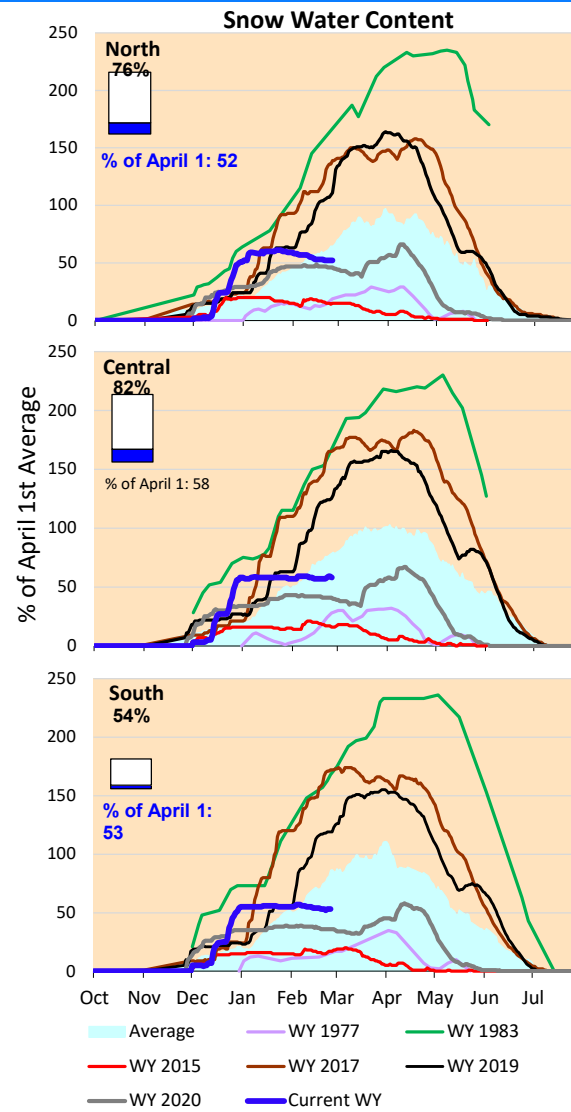
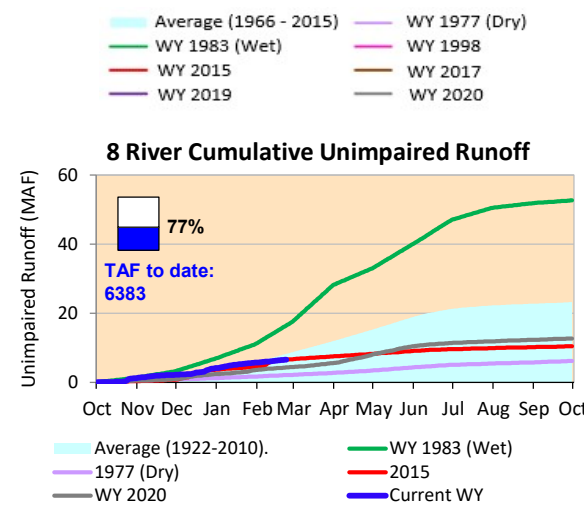
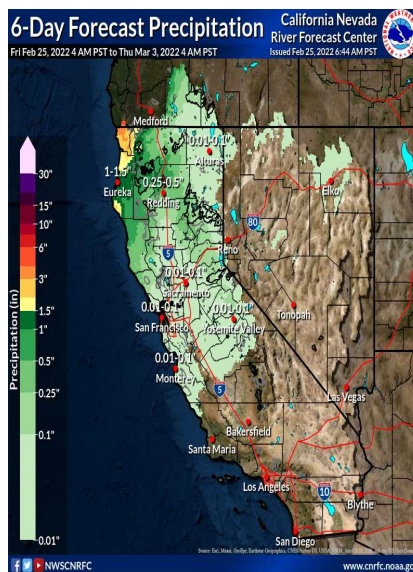


Minimal precipitation is forecast for Northern California coastal region and inland to Shasta Lake for this weekend and early March. The cumulative precipitation remains steady, while snow water content decreased from last week in the North and South. Both cumulative precipitation and snow water content are lower than the average values for this time of year. Actual runoff has fallen below historical average rates.

*Note: Percentages in each plot refers to percent of average for this date. When historic data is unavailable, Snow Water Content bar plot is not shown. The percent of historic average for each SWC location differs slightly from CDEC's report due to small discrepancies in historical data.

6-Day Forecast Precipitation (inches)





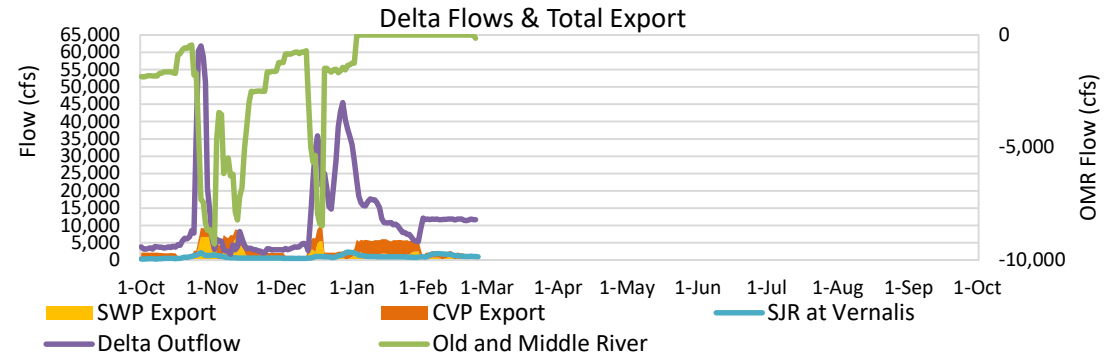
Project Operations



2/25/2022

Delta outflow conditions continue to remain 'balanced' with X2 salinity requirements for February controlling operations. Delta inflows and outflow are similar to last week with some decrease in the CVP and SWP exports to maintain outflow requirement. Shasta and Oroville reservoir storage remains similar to the last week and is still running below average level for this time of year. The storage at Folsom remains steady and is below historic average level for this time of year.

Note: Yesterday's X-2 Position is estimated.



Daily Average Flow

As reported on 2/24

