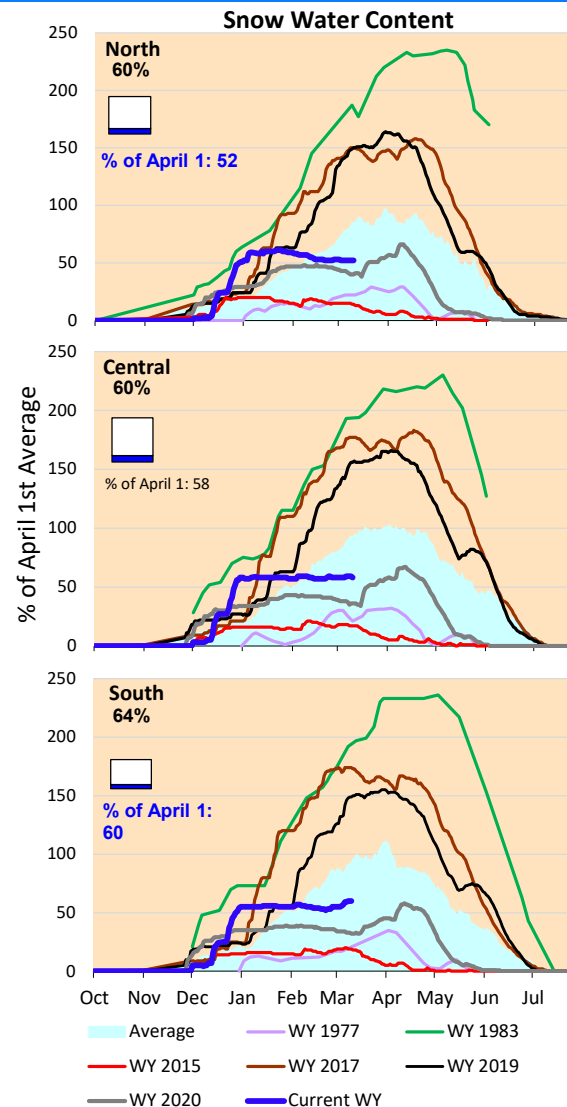
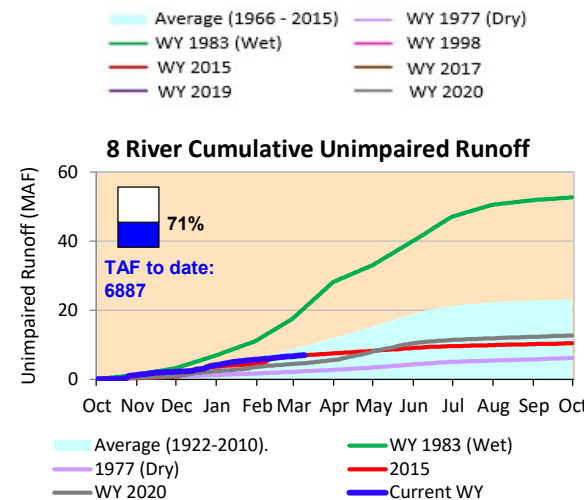
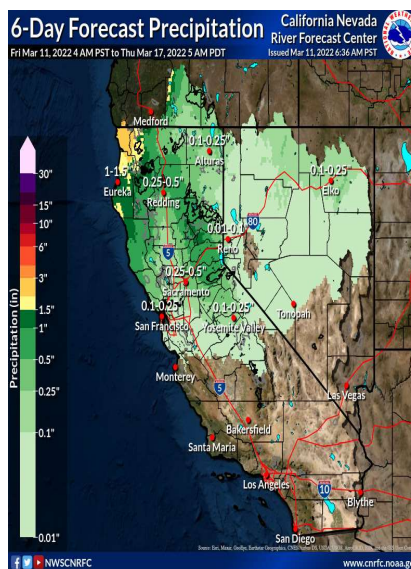


Minimal precipitation is forecast for the northern California, central region and inland to Shasta Lake through the mid March. The cumulative precipitation and snow water content remain steady and are lower than the average values for this time of year. Actual runoff is marginally lower than the historical average rates.

*Note: Percentages in each plot refers to percent of average for this date. When historic data is unavailable, Snow Water Content Bar plot is not shown. The percent of historic average for each SWC location differs slightly from CDEC's report due to small discrepancies in historical data.

6-Day Forecast Precipitation (inches)



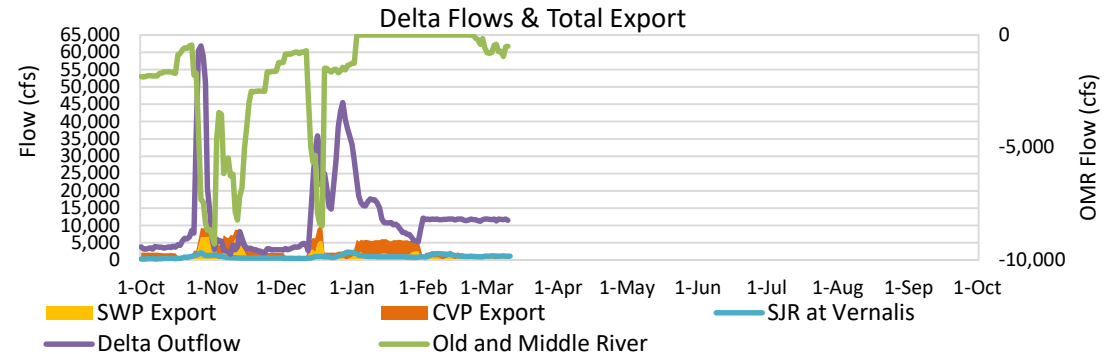


Project Operations



3/11/2022

Delta outflow conditions remain 'balanced' with outflow required to meet X2 at Chipp's Island for 18 days in March. Delta inflows and outflows are roughly the same as last week. Exports remain at low levels, and further reduced from the last week, with daily variations based on Delta outflow conditions. Shasta and Oroville storage remains similar to the last week and still running below average level for this time of year, close to dry conditions experienced in 1977. The storage at Folsom remains constant from last week, which is lower than the historic average level.



Daily Average Flow

As reported on 3/10

