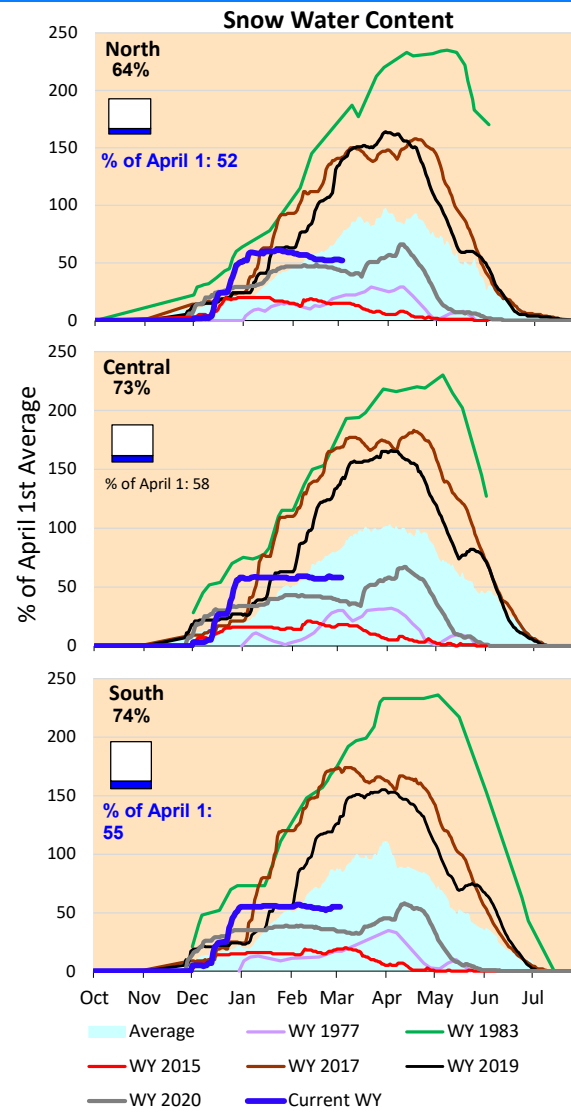
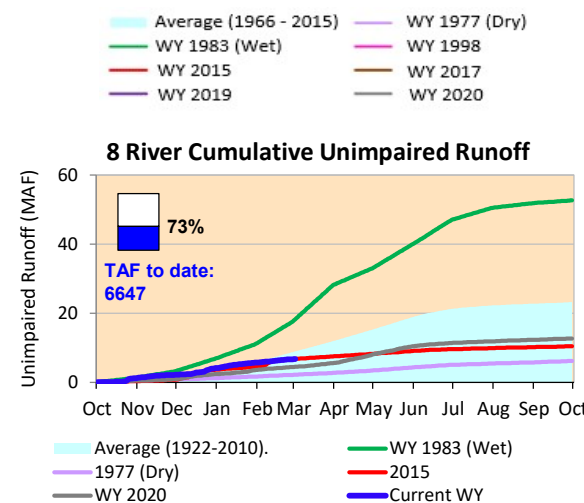
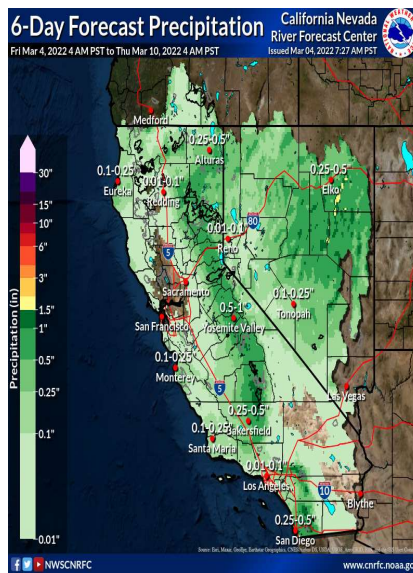


Minimal precipitation is forecast for most of the state over the weekend. The cumulative precipitation and snow water content remain steady and are lower than the average values for this time of year. Actual runoff is marginally lower than the historical average rates.

*Note: Percentages in each plot refers to percent of average for this date. When historic data is unavailable, Snow Water Content Bar plot is not shown. The percent of historic average for each SWC location differs slightly from CDEC's report due to small discrepancies in historical data.

6-Day Forecast Precipitation (inches)





Project Operations



3/4/2022

Delta outflow conditions continue to remain 'balanced' with outflow required to meet X2 at Chipp's Island for 18 days in March. Delta inflows are marginally higher than the last week, with increased reservoir releases compensating for reduced channel accretions. Exports remain at low levels, with daily variations based on Delta outflow conditions. Shasta and Oroville storage remains similar to the last week and still running below average level for this time of year, close to dry conditions experienced in 1977. The storage at Folsom has decreased marginally and is lower than the historic average level.

