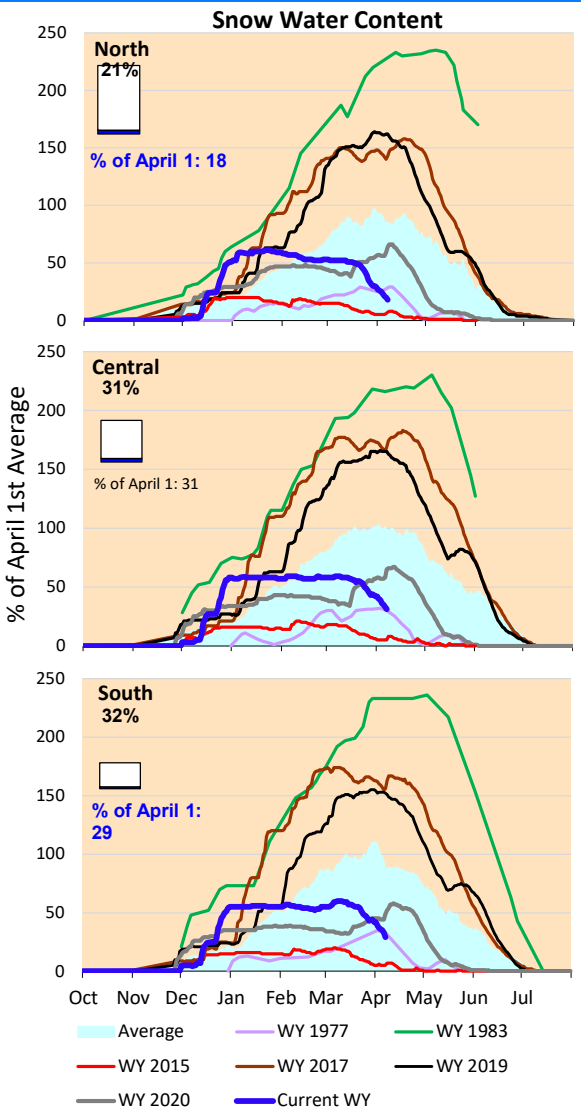
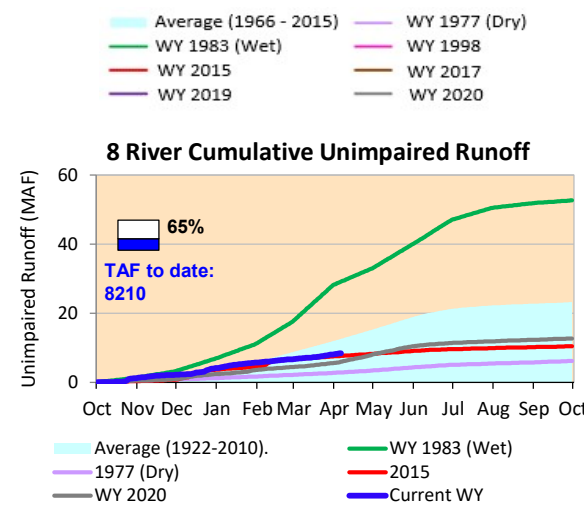
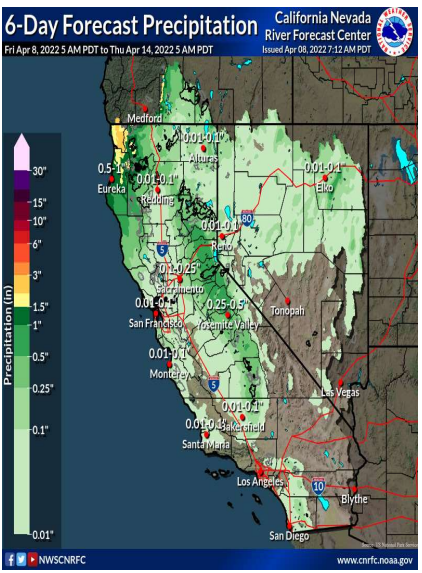


Minimal precipitation is forecast for Northern California coastal region and inland to Shasta Lake through early next week. The cumulative precipitation has fallen well below normal for the Northern 8-Station Precipitation Index. The snow water content is considerably lower than the average values for this time of year. Actual runoff is lower than the historical average rates; close to conditions experienced in 2015.

\*Note: Percentages in each plot refers to percent of average for this date. When historic data is unavailable, Snow Water Content Bar plot is not shown. The percent of historic average for each SWC location differs slightly from CDEC's report due to

### 6-Day Forecast Precipitation (inches)



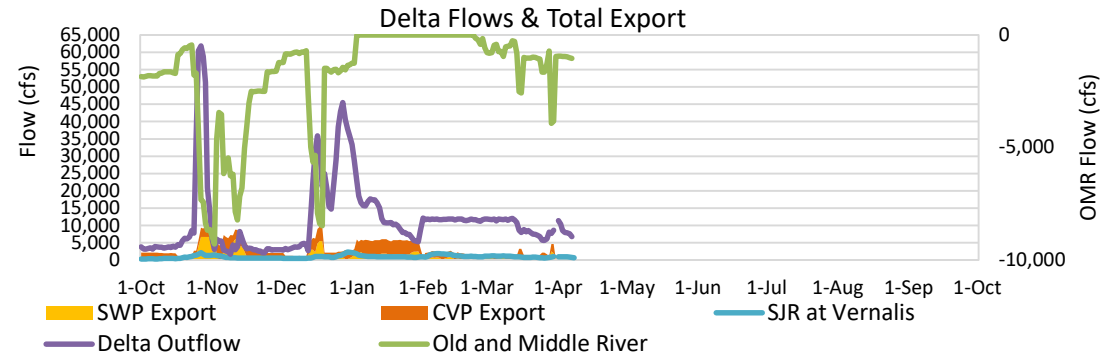


# Project Operations



4/8/2022

Delta outflow conditions continue to remain 'balanced'. Delta inflows and outflows holding steady. CVP and SWP exports are being maintained at low levels. Shasta and Oroville still running below average level for this time of year, close to dry conditions experienced in 1977. The storage at Folsom increased from last week, which is lower than the historic average level.



## Daily Average Flow

As reported on 4/6

