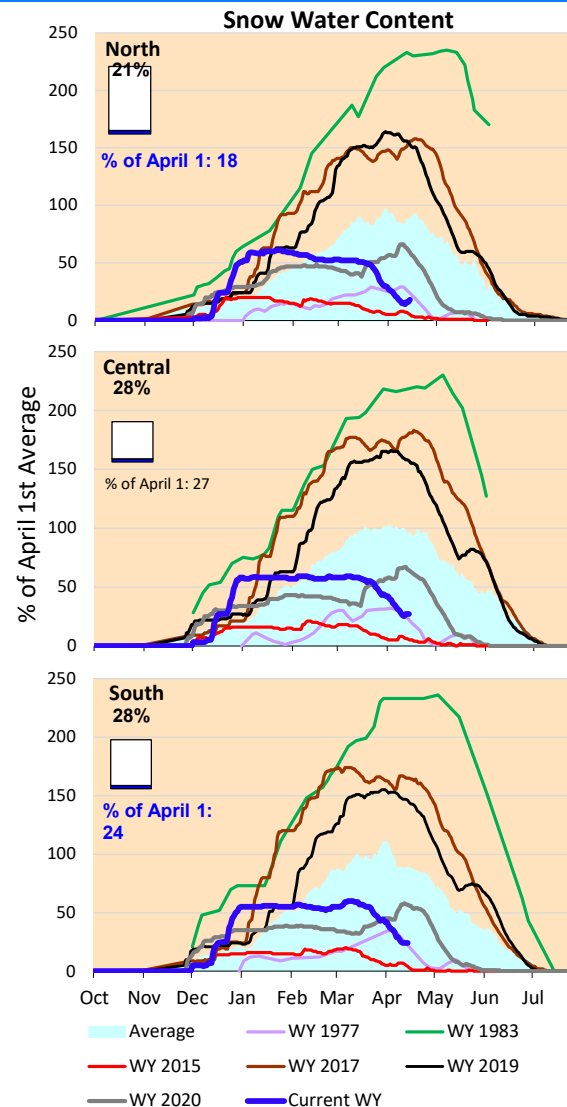
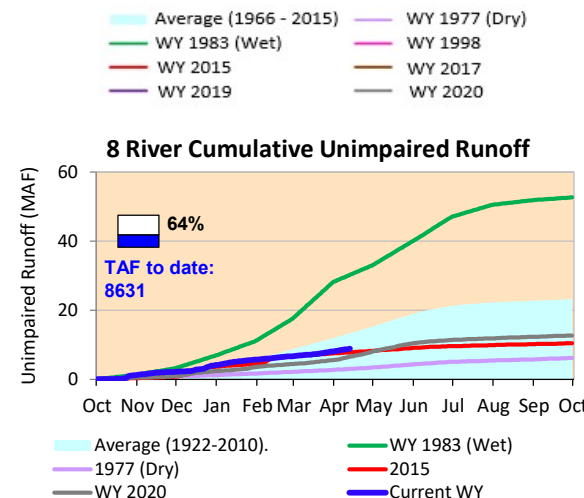
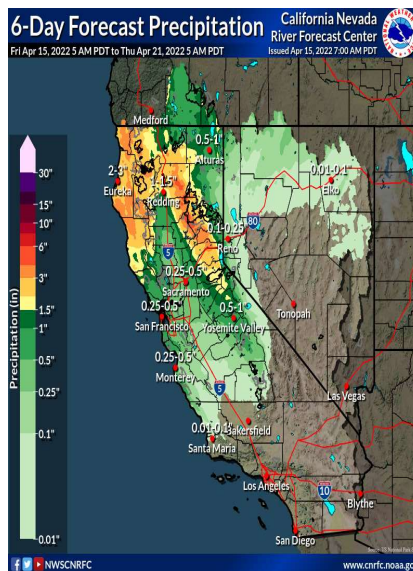


Decent precipitation is forecasted for Northern California for the next week. The cumulative precipitation remains steady and similar to the average values for this time of year in San Joaquin basin, but below average for the Northern Sierra region. The snow water content has reduced and is lower than the average values for this time of year. Actual runoff is lower than the historical average rates, close to conditions experienced in 2015.

*Note: Percentages in each plot refers to percent of average for this date. When historic data is unavailable, Snow Water Content Bar plot is not shown. The percent of historic average for each SWC location

6-Day Forecast Precipitation (inches)



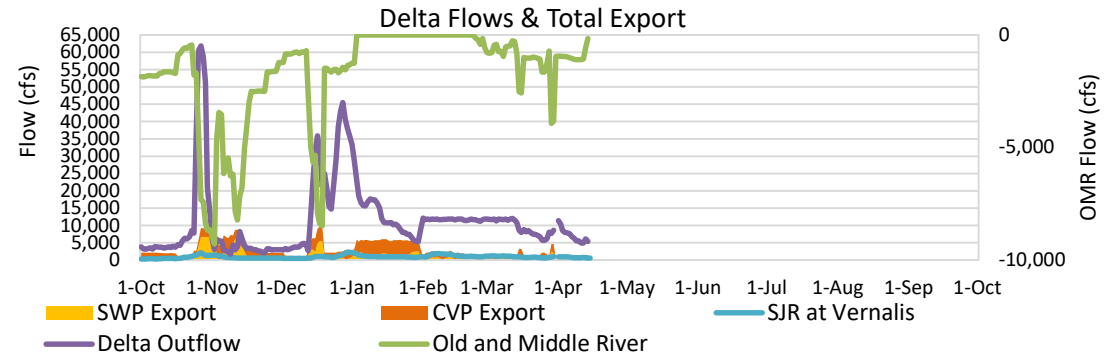


Project Operations



4/15/2022

Delta outflow conditions continue to remain 'balanced'. Delta inflows and outflows were relatively steady last week, and CVP and SWP exports remain similar to last week's amounts. Shasta and Oroville Reservoir storage amounts are still significantly below average levels for this time of year, but are higher than dry conditions experienced in 1977. The storage at Folsom increased from last week, which is lower than the historic average level. Note: Yesterday's X-2 Position is estimated.



Daily Average Flow

As reported on 4/13

