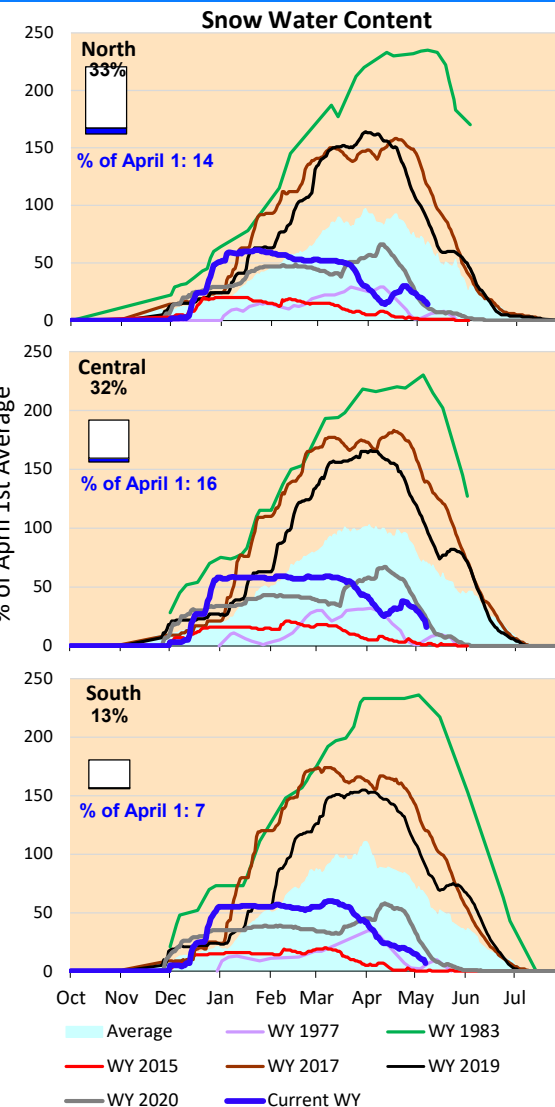
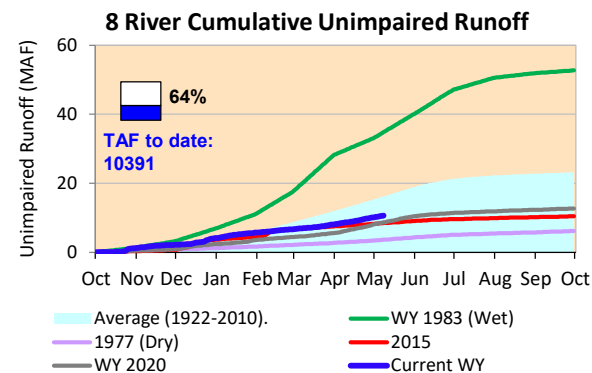
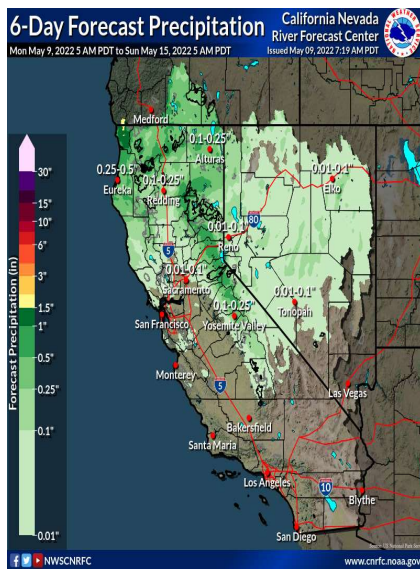


Minimal precipitation forecast over small patches of Northern California through this week. Cumulative precipitation for the Northern Sierra remains below average for this time of year. The snow water content has decreased and is lower than the seasonal average. Actual runoff is lower than the historical average rates, close to conditions experienced in 2015.

*Note: Percentages in each plot refers to percent of average for this date. When historic data is unavailable, Snow Water Content Bar plot is not shown. The percent of historic average for each SWC location differs slightly from CDEC's report due to small discrepancies in historical data.

6-Day Forecast Precipitation (inches)





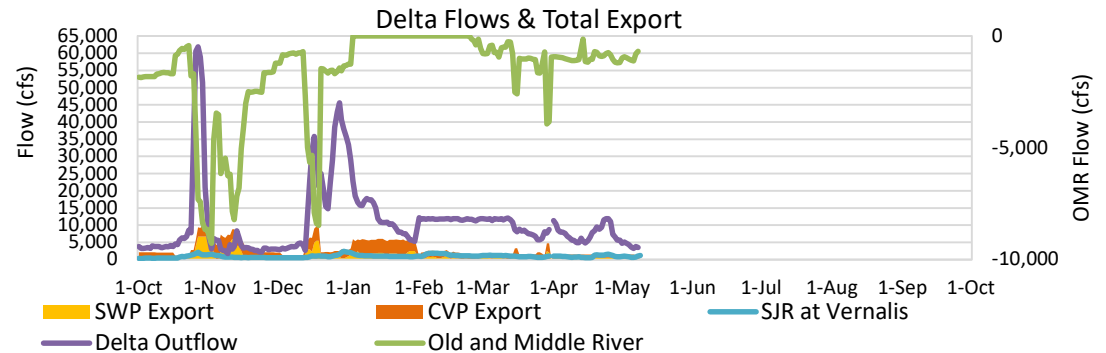
Project Operations



5/9/2022

Delta outflow conditions remain 'balanced'. Delta inflows and outflows have reduced this week. CVP and SWP exports remain similar to last week. Shasta and Oroville Reservoir storage amounts are still significantly below average levels for this time of year, but are higher than dry conditions experienced in 1977. The storage at Folsom increased from last week, and are at the historic average level.

Note: Yesterday's X-2 Position is estimated.



Daily Average Flow

As reported on 5/7

