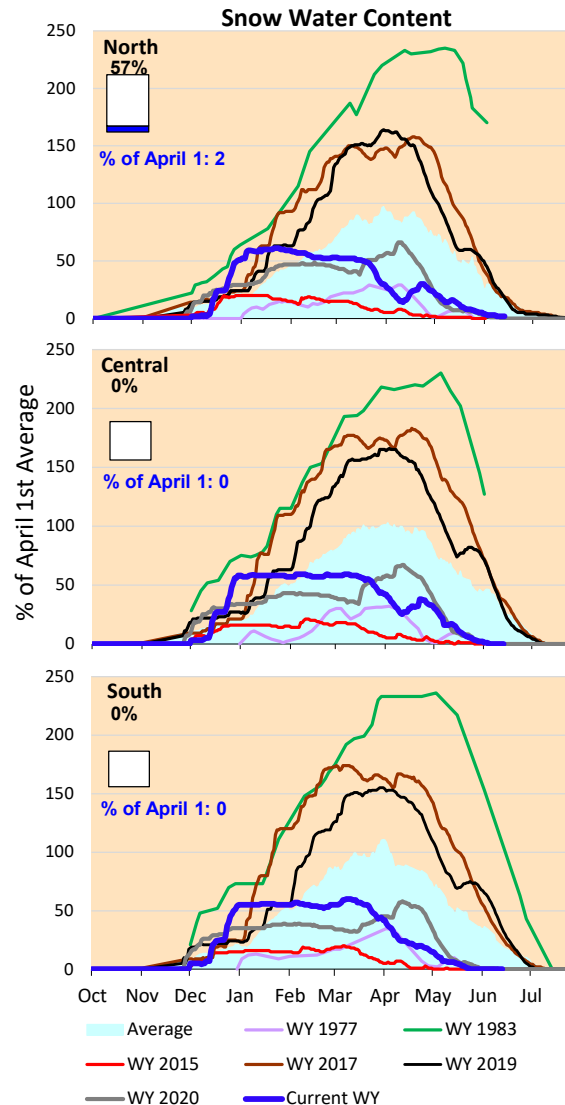
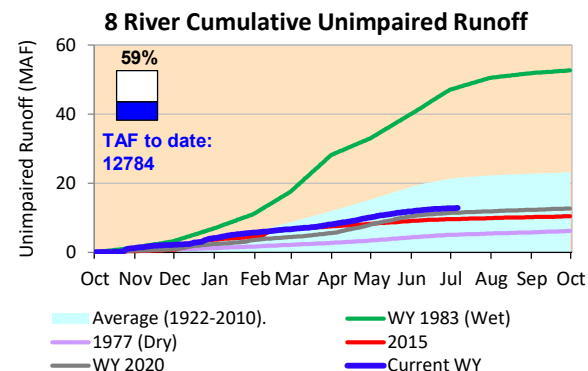
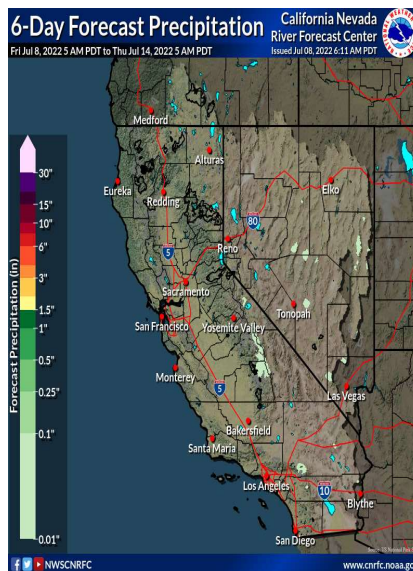


No precipitation is forecast for California for the next week. Cumulative precipitation for the Northern and Southern Sierra remain below average for this time of year. The snow water content is significantly below the average values for this time of year. Actual runoff is lower than the historical average rates, close to conditions experienced in 2020.

*Note: Percentages in each plot refers to percent of average for this date. When historic data is unavailable, Snow Water Content Bar plot is not shown. The percent of historic average for each SWC location differs slightly from CDEC's report due to small discrepancies in historical data.

6-Day Forecast Precipitation (inches)



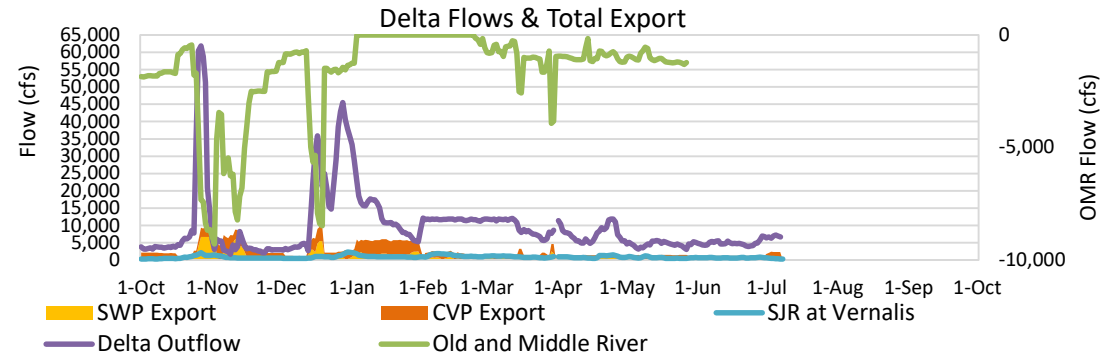


Project Operations



7/8/2022

Delta outflow conditions remain 'balanced'. Delta outflows this week was similar to last week, with an increase in SAC inflow and decrease in SJR inflow. CVP and SWP exports increased as compared to last week's amounts. Shasta and Oroville Reservoir storage amounts are still significantly below average levels for this time of year, but are higher than dry conditions experienced in 1977. The storage at Folsom is above the historic average level but is dropping with increased releases. All storage volumes decreased from last week. Note: Yesterday's X-2 Position is estimated.



Daily Average Flow

As reported on 7/6

