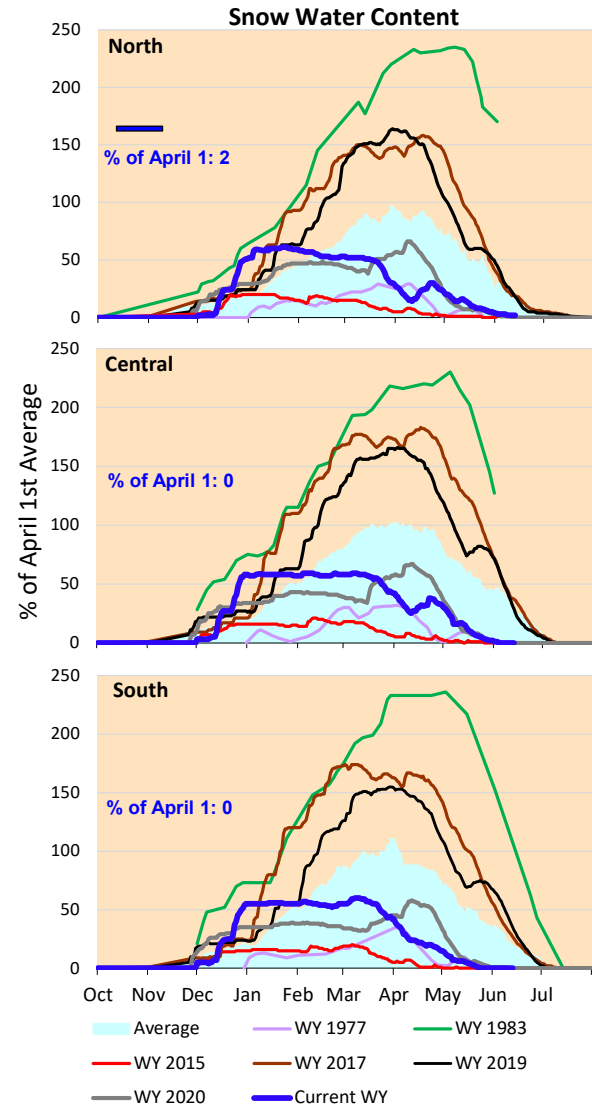
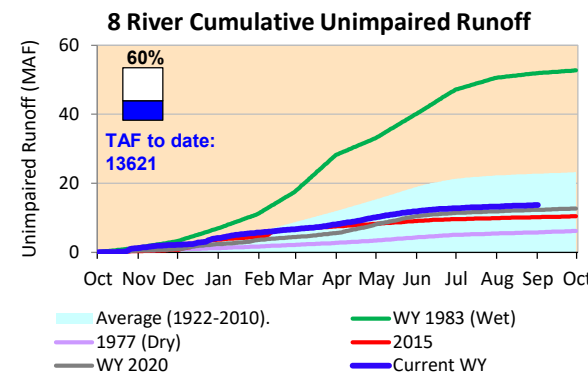
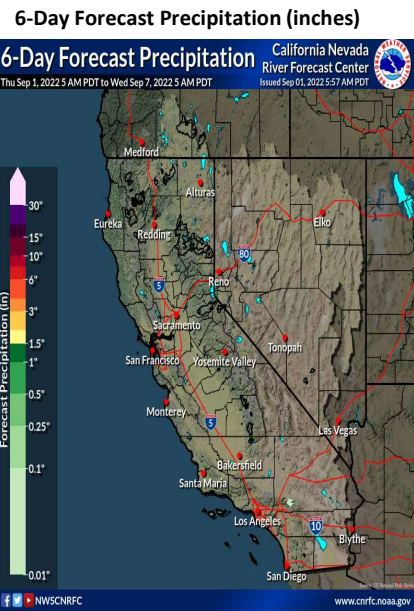


No precipitation is forecast for the next week. Cumulative precipitation for the Sierras remain below average for this time of year. The snow water content is below average for this time of year. Actual runoff is lower than the historical average rates, close to conditions experienced in 2020.

*Note: Percentages in each plot refers to percent of average for this date. When historic data is unavailable, Snow Water Content Bar plot is not shown. The percent of historic average for each SWC location differs slightly from CDEC's report due to small discrepancies in historical data.



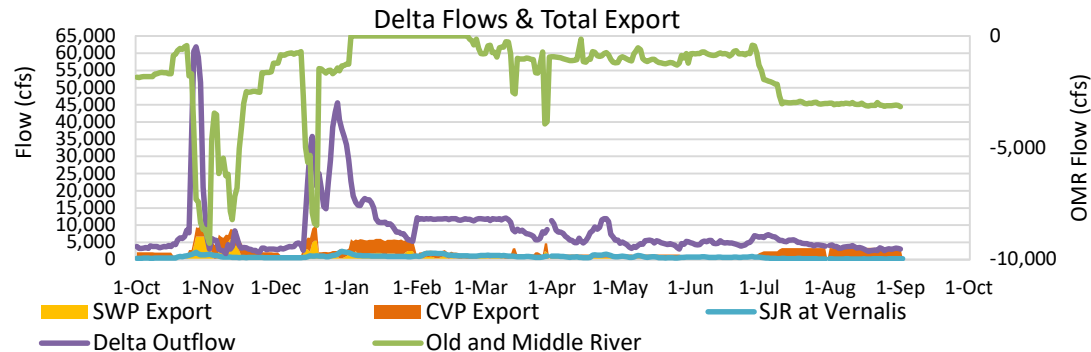


Project Operations



9/2/2022

Delta outflow conditions remain 'balanced'. Delta outflows decreased and inflows this week was similar to last week, with a small decrease in Sacramento River inflow. SWP and CVP exports remain the same as last week's amounts. Shasta and Oroville Reservoir storage amounts are still significantly below average levels for this time of year, but are higher than 1977 dry conditions. Storage at Folsom is at the historic average level but has been dropping rapidly with increased releases over the last few weeks. All storage volumes decreased from last week. Note: Yesterday's X-2 Position is estimated.



Daily Average Flow

As reported on 8/30

