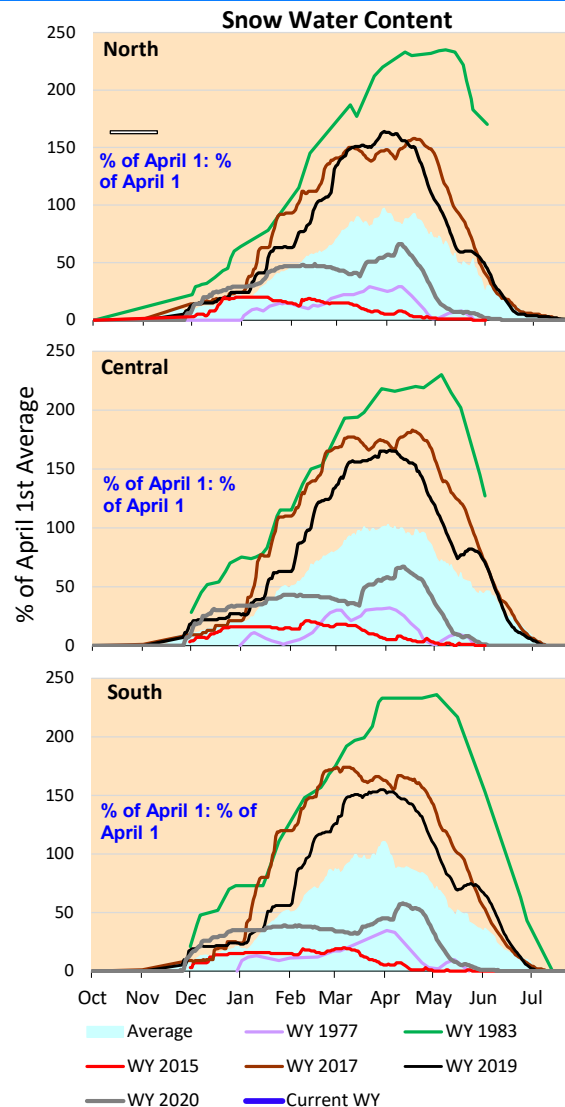
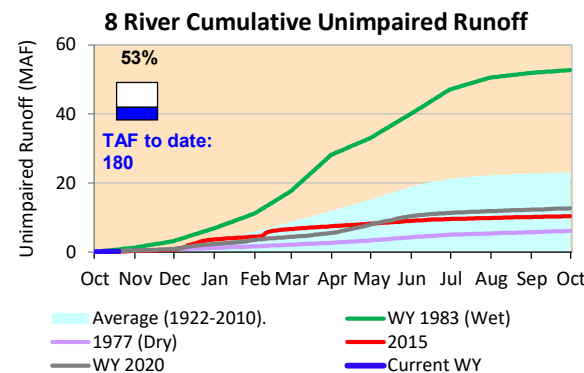
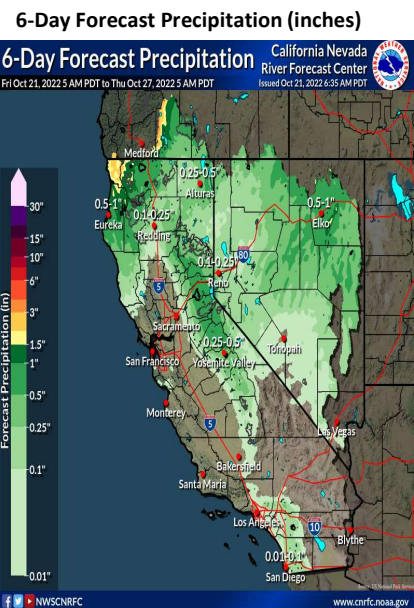


Minimal precipitation is forecast for the California next week. We've started the new water year, but cumulative precipitation for the Sierras remain similar to the average for this time of year. Actual runoff is similar to the historical average rates, close to conditions experienced in 2020.

\*Note: Percentages in each plot refers to percent of average for this date. When historic data is unavailable, Snow Water Content Bar plot is not shown. The percent of historic average for each SWC location differs slightly from CDEC's report due to small discrepancies in historical data.



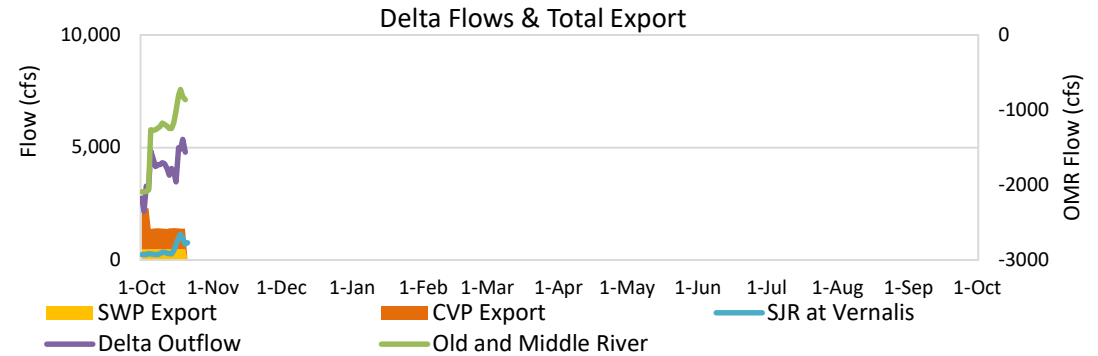


# Project Operations



10/21/2022

Delta outflow conditions remain 'balanced'. Delta outflows have increased as compared to last week, with an increase in SJR inflow. CVP and SWP exports remain the same as last week's amounts. Shasta, Folsom and Oroville Reservoir storage amounts are significantly below average levels for this time of year. All storage volumes decreased from last week. Note: Yesterday's X-2 Position is estimated.



## Daily Average Flow

As reported on 10/20

