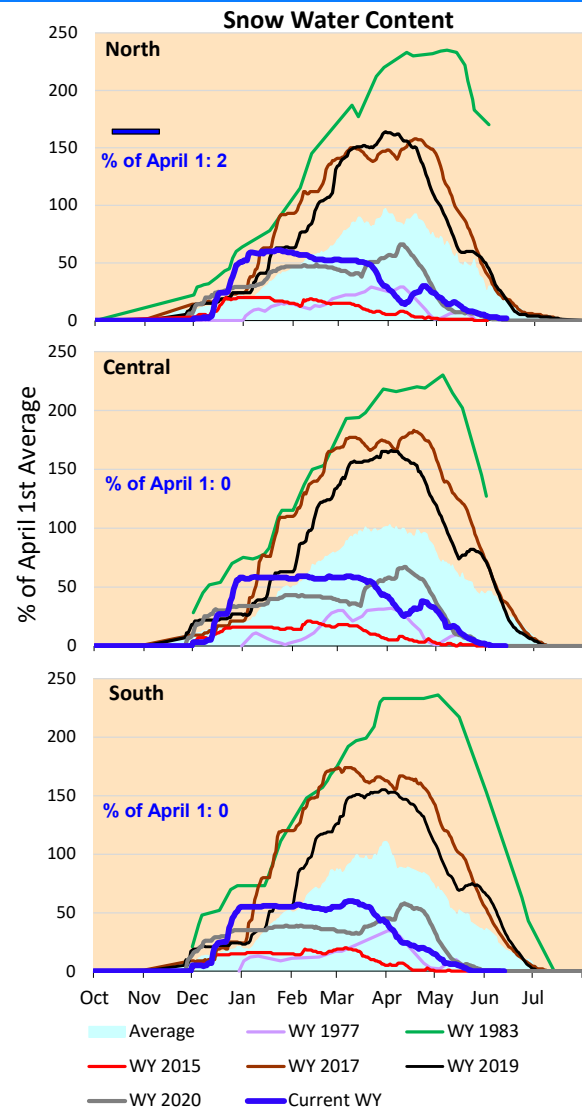
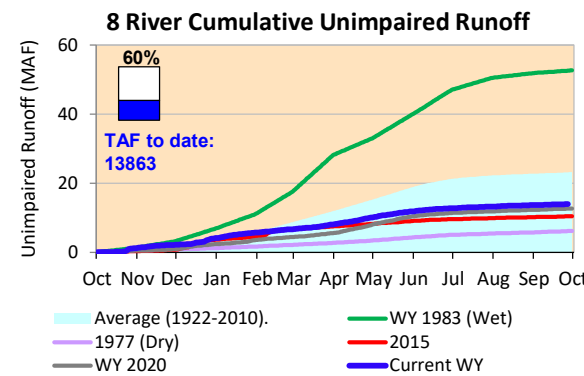
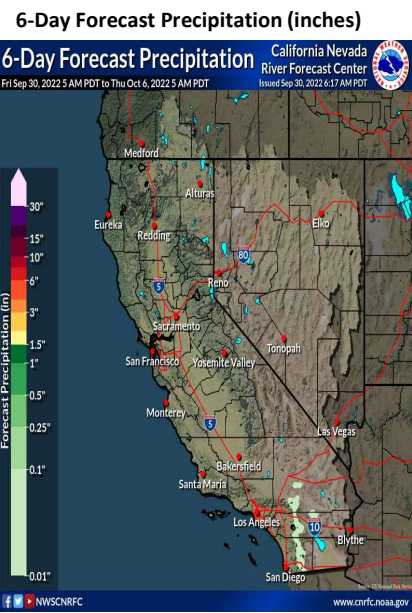
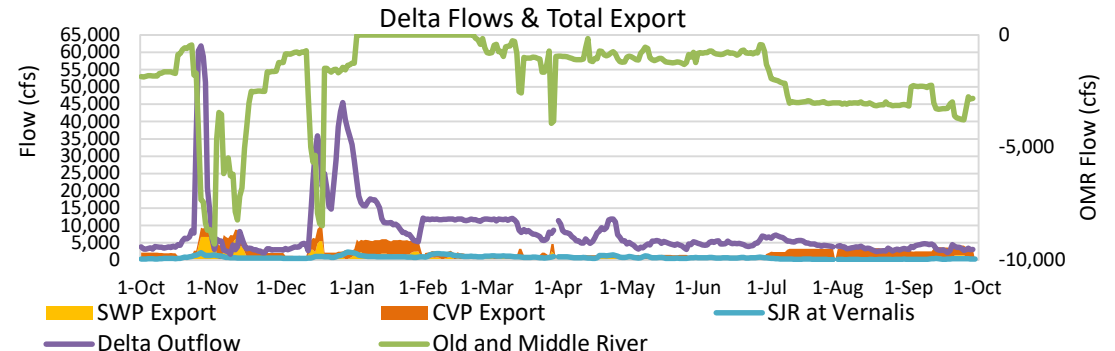


No significant precipitation is forecasted for the California for the next week. Cumulative precipitation for the Sierras remain below average for this time of year. Actual runoff is lower than the historical average rates, close to conditions experienced in 2020.

*Note: Percentages in each plot refers to percent of average for this date. When historic data is unavailable, Snow Water Content Bar plot is not shown. The percent of historic average for each SWC location differs slightly from CDEC's report due to small discrepancies in historical data.



Delta outflow conditions remain 'balanced'. Delta outflows have decreased as compared to last week. SJR inflows remain similar to last week, with a decrease in SAC inflow. SWP exports reduced and CVP exports remain the same as last week's amounts. Shasta and Oroville Reservoir storage amounts are still significantly below average levels for this time of year, but are higher than dry conditions experienced in 1977. The storage at Folsom is below the historic average level as a result of high releases beginning in July. All storage volumes decreased from last week. Note: Yesterday's X-2 Position is estimated.



Daily Average Flow

As reported on 9/27

