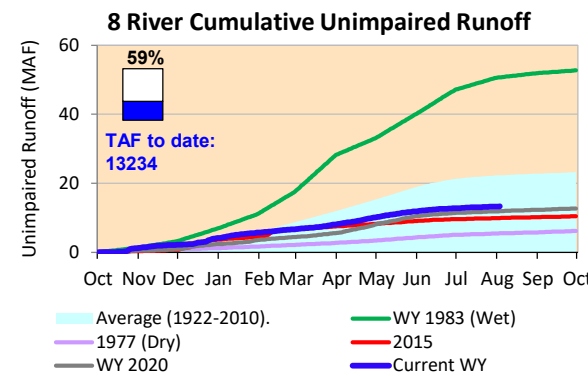
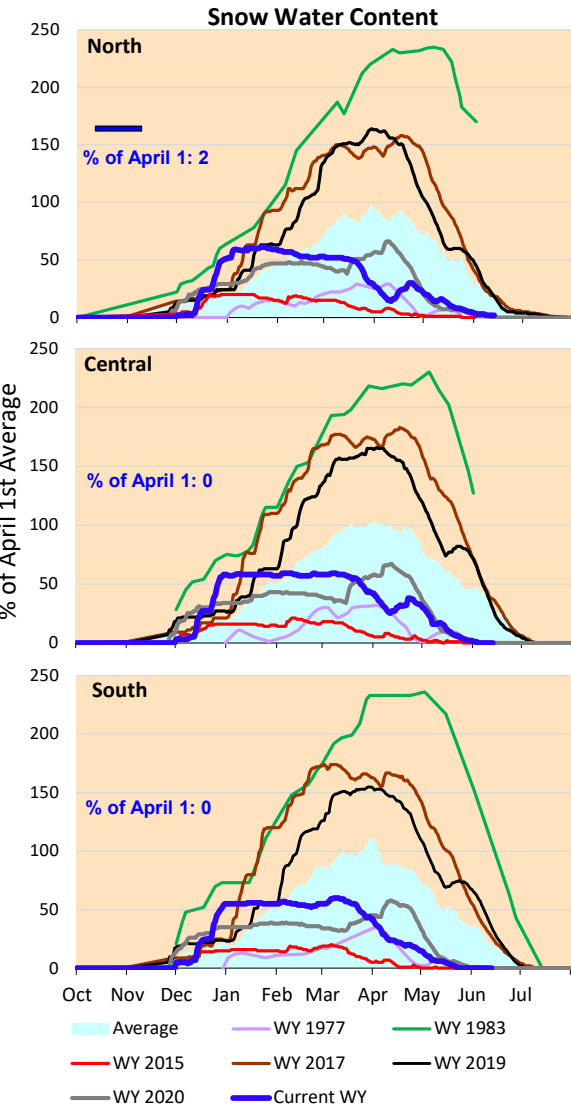
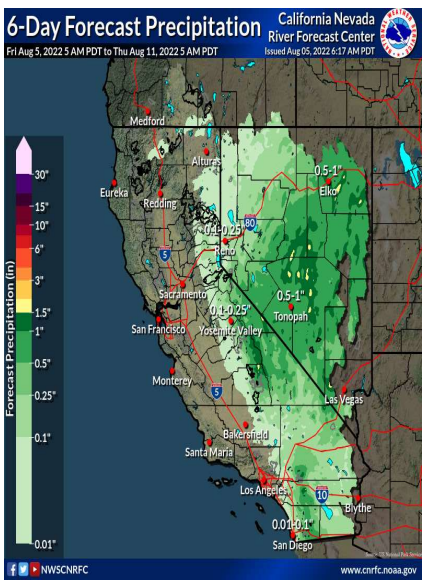


Minimal precipitation is forecasted for eastern California for the next week. Cumulative precipitation for the Northern and Southern Sierra remain below average for this time of year. The snow water content is significantly below the average values for this time of year, snowmelt is over. Actual runoff is lower than the historical average rates, close to conditions experienced in 2020.

*Note: Percentages in each plot refers to percent of average for this date. When historic data is unavailable, Snow Water Content Bar plot is not shown. The percent of historic average for each SWC location differs slightly from CDEC's report due to small discrepancies in historical data.



6-Day Forecast Precipitation (inches)



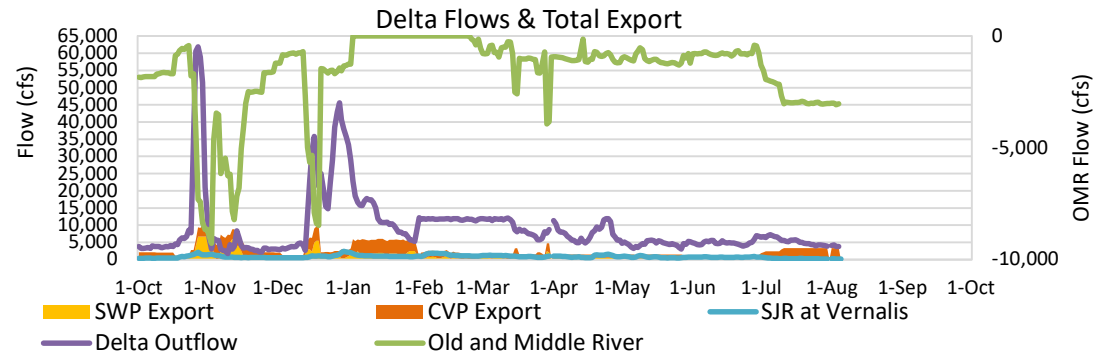


Project Operations



8/5/2022

Delta outflow conditions remain 'balanced'. Delta outflows and inflows this week were similar to last week. CVP and SWP exports remain the same as last week's amounts. Shasta and Oroville Reservoir storage amounts are still significantly below average levels for this time of year, but are higher than dry conditions experienced in 1977. The storage at Folsom is at the historic average level but has started dropping rapidly with increased releases. All storage volumes decreased from last week. Note: Yesterday's X-2 Position is estimated.



Daily Average Flow

As reported on 8/2

