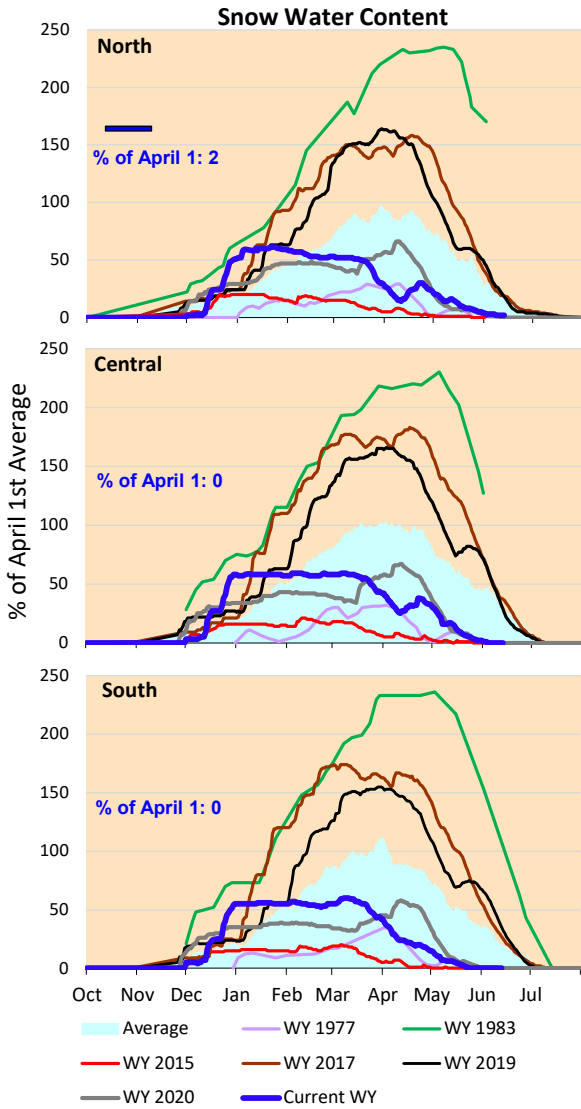
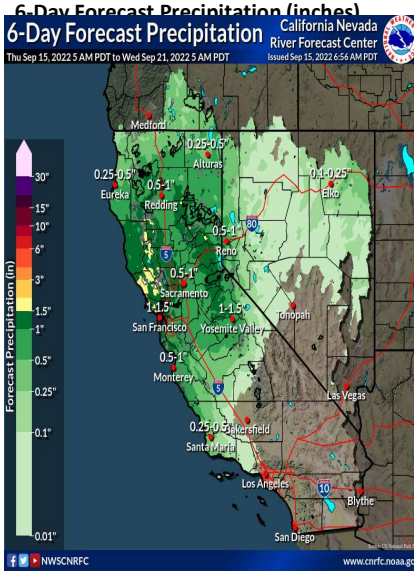
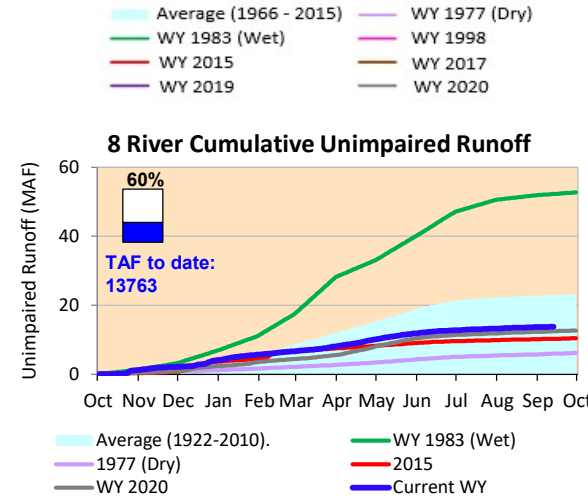


Some precipitation is forecasted for the Northern California for the next week. Cumulative precipitation for the Sierras remain below average for this time of year. Actual runoff is lower than the historical average rates, close to conditions experienced in 2020.

*Note: Percentages in each plot refers to percent of average for this date. When historic data is unavailable, Snow Water Content Bar plot is not shown. The percent of historic average for each SWC location differs slightly from CDEC's report due to small discrepancies in historical data.

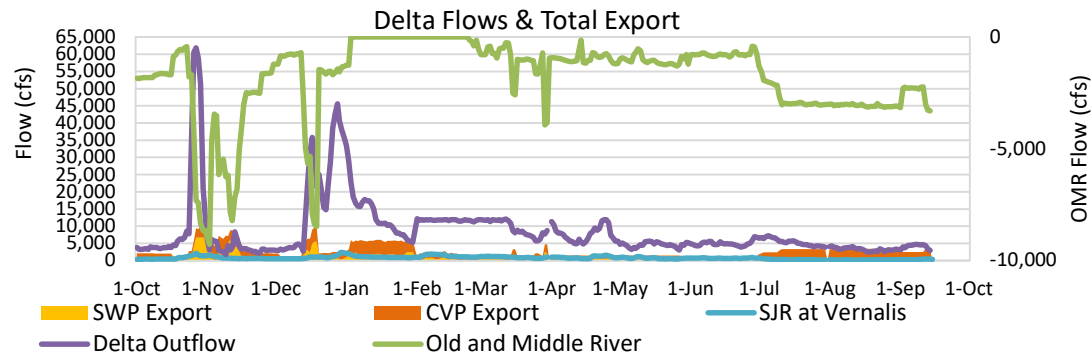




Project Operations

9/15/2022

Delta outflow conditions remain 'balanced'. Delta outflows remain similar to last week, with a small increase in SJR inflow. CVP exports increased and SWP exports remain the same as last week's amounts. Shasta and Oroville Reservoir storage amounts remain significantly below average levels for this time of year, but are higher than dry conditions experienced in 1977. The storage at Folsom is also below historic average levels and has been dropping rapidly with increased releases. All storage volumes decreased from last week. Note: Yesterday's X-2 Position is estimated.



Daily Average Flow

As reported on 9/12

