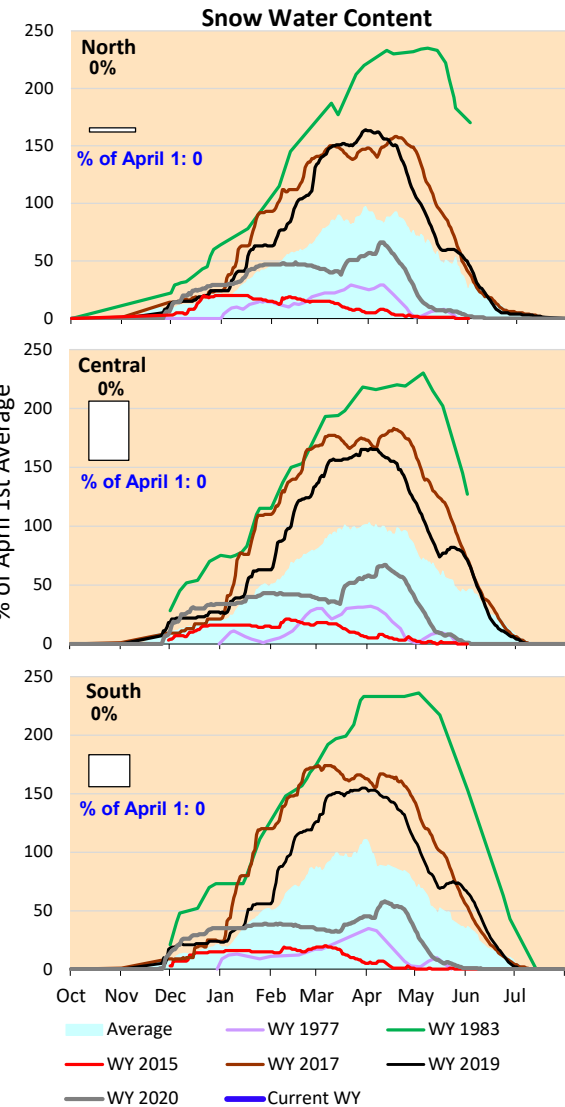
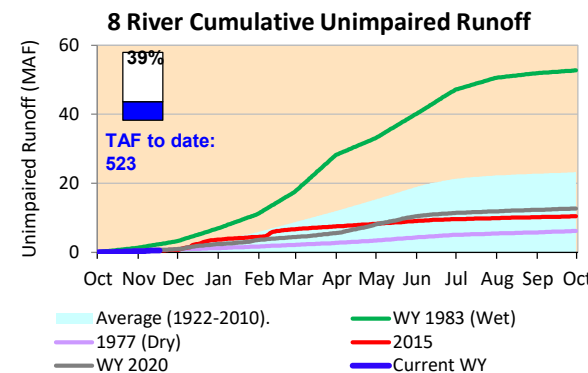
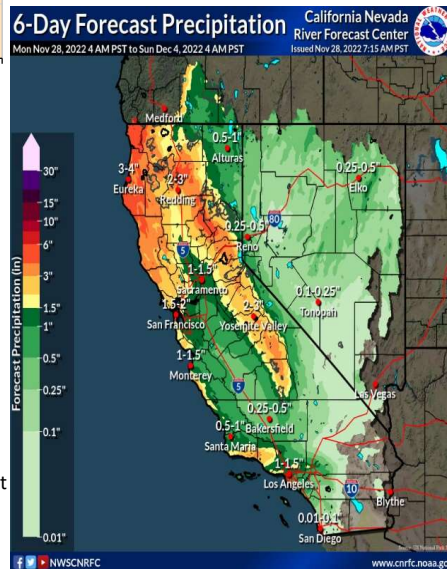


Some good precipitation is forecasted for Northern and Central California in early December. Cumulative precipitation for the Sierras are below the average for this time of year. Actual runoff is similar to the historical average rates, close to conditions experienced in 2020.

*Note: Percentages in each plot refers to percent of average for this date. When historic data is unavailable, Snow Water Content Bar plot is not shown. The percent of historic average for each SWC location differs slightly from CDEC's report due to small discrepancies in historical data.

6-Day Forecast Precipitation (inches)



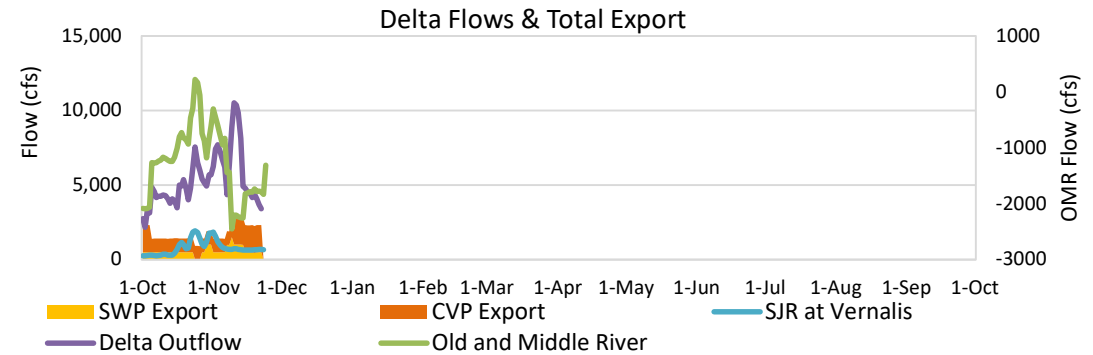


Project Operations



11/25/2022

Delta outflow conditions remain 'balanced'. Delta outflows have decreased and SJR remains similar to last week, with a reduction in SAC inflow. SWP and CVP export are similar to last week's amounts. Shasta, Folsom and Oroville Reservoir storage amounts are significantly below average levels for this time of year. All storage volumes decreased from last week. Note: Yesterday's X-2 Position is estimated.



Daily Average Flow

As reported on 11/22

