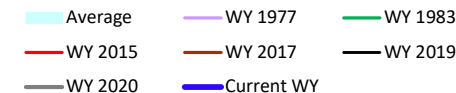
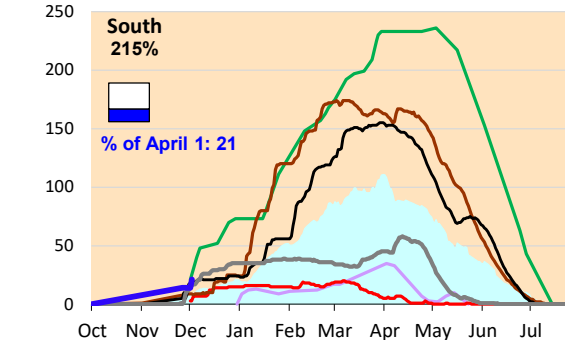
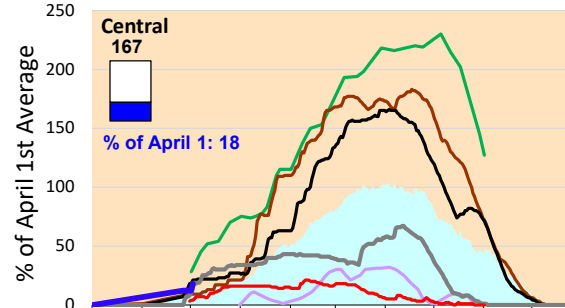
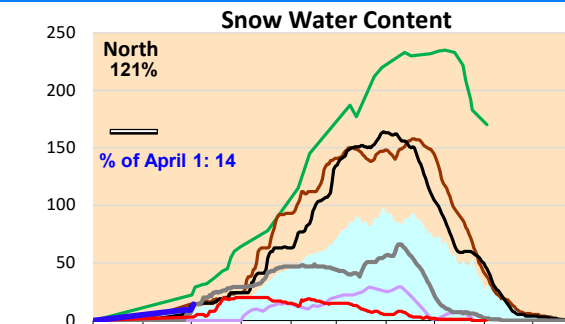
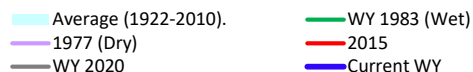
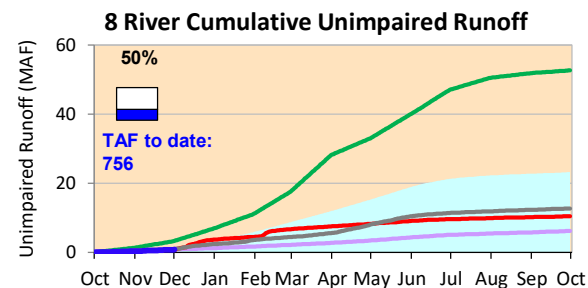
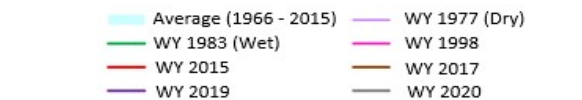
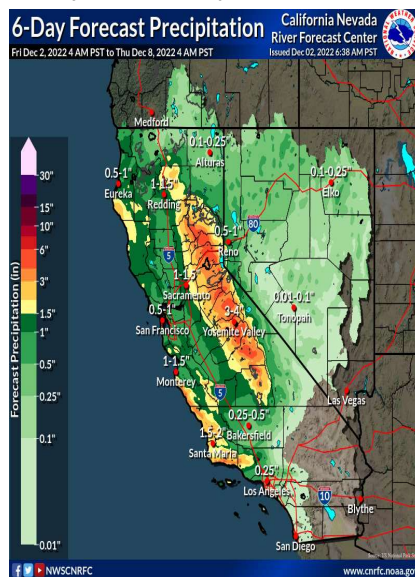


Some snow on the Sierras now and good precipitation is forecasted for California in early December. Cumulative precipitation for the Sierras are below the average for this time of year. Actual runoff is similar to the historical average rates, close to conditions experienced in 2020.

\*Note: Percentages in each plot refers to percent of average for this date. When historic data is unavailable, Snow Water Content Bar plot is not shown. The percent of historic average for each SWC location differs slightly from CDEC's report due to small discrepancies in historical data.

### 6-Day Forecast Precipitation (inches)



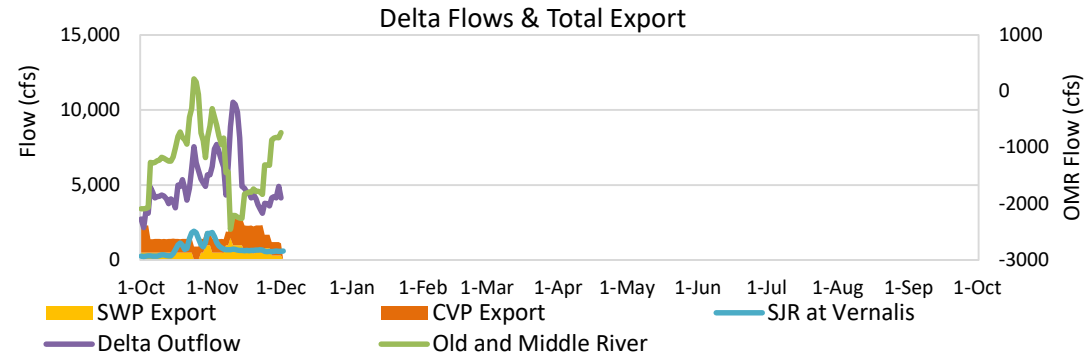


# Project Operations



12/2/2022

Delta outflow conditions remain 'balanced'. Delta outflows have increased, with a reduction in SJR and SAC inflow as compared to last week. SWP and CVP export are less than last week's amounts. Shasta, Folsom and Oroville Reservoir storage amounts are significantly below average levels for this time of year. All storage volumes decreased from last week. Note: Yesterday's X-2 Position is estimated.



## Daily Average Flow

As reported on 12/1

