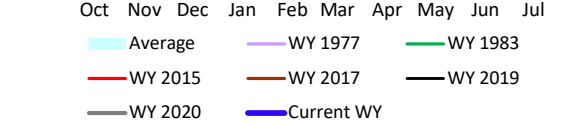
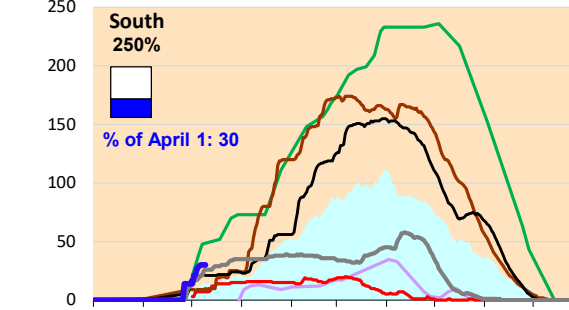
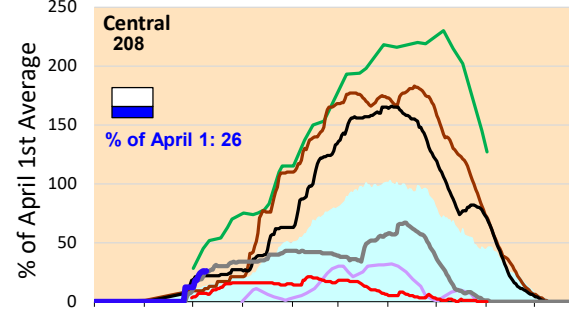
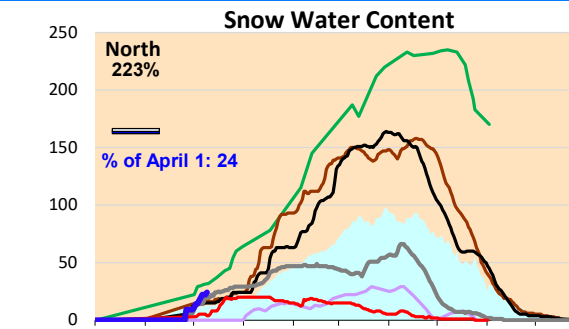
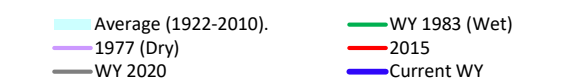
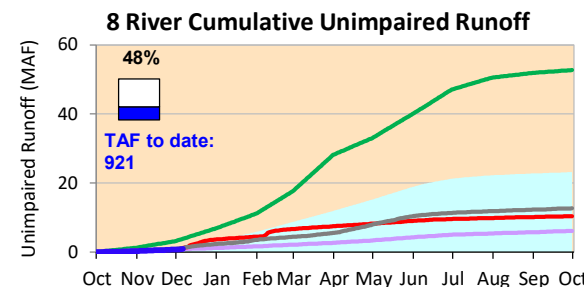
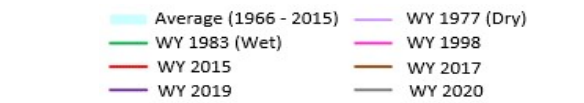
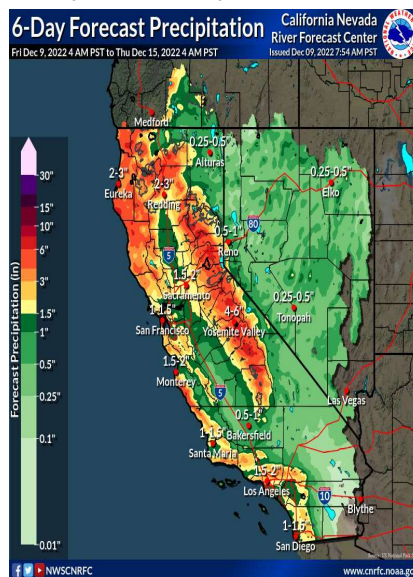


Some strong storm is forecasted for Northern and Central California along with coastal region this weekend. Cumulative precipitation for the Sierras are below the average for this time of year. The snow water content is above the average values for this time of year. Actual runoff is similar to the historical average rates, close to conditions experienced in 2020.

\*Note: Percentages in each plot refers to percent of average for this date. When historic data is unavailable, Snow Water Content Bar plot is not shown. The percent of historic average for each SWC location differs slightly from CDEC's report due to small discrepancies in historical data.

### 6-Day Forecast Precipitation (inches)



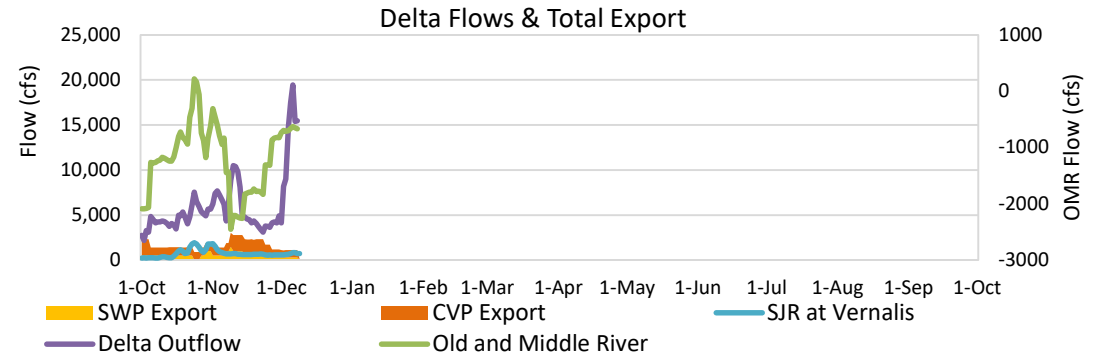


# Project Operations



12/9/2022

Delta outflow conditions remain 'balanced'. Delta outflows, and SJR and SAC inflow have increased as compared to last week. A persistent slug of high salinity water in the South Delta is limiting project exports. Increased runoff from forecasted storms should be sufficient to freshen up the Delta early next week. SWP and CVP export are similar to last week's amounts. Shasta and Oroville Reservoir storage amounts are significantly below average levels for this time of year. The storage at Folsom is also below the historic average level. All storage volumes decreased from last week. Note: Yesterday's X-2 Position is estimated.



## Daily Average Flow

As reported on 12/8

